



Photovoltaic station inverter protection





Overview

Discover key solar inverter protection features, including surge, overload, and anti-islanding safeguards for safe and efficient solar system performance. They work by redirecting excess voltage away from the inverter, typically to a grounding line, thereby preventing damage to sensitive components inside the inverter. Discover essential strategies to minimize risks and enhance safety. Let's explore how lightning affects PV systems, the risks involved, and practical steps you can take to. Inverter protection is important to ensure the longevity and reliability of the inverter. 1 second and issue a warning signal.



Photovoltaic station inverter protection



Surge Protector for Inverter

In modern photovoltaic systems, proper solar inverter surge protection is essential to safeguard your system and improve reliability. Installing the right SPD for solar inverter can ...

[15 important functions of solar inverter protection - TYCORUN](#)

Supercharge inverter safety with top protection tips. Learn to shield against surges, overcurrent, and temperature extremes for lasting ...



[Photovoltaic inverter protection function](#)

Control and Protection Circuitry: PV inverters incorporate control and protection circuitry to ensure safe and efficient operation. This includes monitoring the input and output voltage and current, ...

[The Photovoltaic Inverter Protection Setting List: Your Solar ...](#)

The secret sauce often lies in the photovoltaic inverter protection setting list - the unsung hero preventing your renewable energy investment from going up in smoke. Let's crack open this ...



[How to Protect Photovoltaic Power Stations from Lightning?](#)

Home Power Inverter will provide a detailed introduction to how PV power stations can implement effective lightning protection, covering aspects such as site selection and layout, ...



LFP 48V 100Ah

[Inverter Protection: Why It's Important and How to Ensure Yours is](#)

Inverter protection is important to ensure the longevity and reliability of the inverter. Without proper protection, an inverter can be damaged by power surges, voltage spikes, and other ...



[Inverter Protection: Boost Performance & Guard Against Risks -- ...](#)

Supercharge inverter safety with top protection tips. Learn to shield against surges, overcurrent, and temperature extremes for lasting performance!

Product Model
HJ-ESS-215A(100KW/215KWh)
HJ-ESS-115A(50KW 115KWh)

Dimensions
1600*1280*2200mm
1600*1200*2000mm

Rated Battery Capacity
215KWH/115KWH

Battery Cooling Method
Air Cooled/Liquid Cooled

[15 important functions of solar inverter protection - TYCORUN](#)



This article will introduce you to some common functions of solar inverter protection, including input overvoltage/overcurrent, input reverse polarity, output overcurrent/short circuit, anti ...

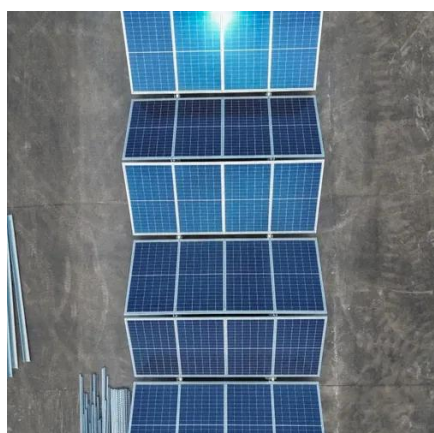


[The Protection Functions of Solar Inverter](#)

An solar inverter with good performance should have complete protection functions to deal with various abnormal situations in the actual use process, so that the solar inverter itself and other parts of the ...

[Complete Overview Of Solar Inverter Protection](#)

Discover key solar inverter protection features, including surge, overload, and anti-islanding safeguards for safe and efficient solar system performance.



[How to Prevent Your Inverter from Thunderstrikes from PV Panels](#)

Learn how to Prevent Your Inverter from Thunderstrikes from PV Panels with essential strategies like surge protection devices, proper grounding, and regular maintenance.



Contact Us

For catalog requests, pricing, or partnerships, please visit:

<https://www.iwap.com.pl>

Phone: +34 919 456 782

Email: info@iwap.com.pl

Scan the QR code to access our WhatsApp.

