



Photovoltaic support structure system specification





Overview

The RERH specifications and checklists take a builder and a project design team through the steps of assessing a home's solar resource potential and defining the minimum structural and system components needed to support a solar energy system. The Renewable Energy Ready Home (RERH) specifications were developed by the U.S. Reach out and see how we can back you up. Solar energy offers a clean way forward, cutting back on fossil fuel use and tapping into power that's always overhead. Panels catch the sunlight and flip it into electricity, and more often than not, they end up on the ground. The module support (array mounting) structure shall hold the PV module (s). The module (s) shall be mounted either on the rooftop of the house or on a metal pole that can be fixed to the wall of the house or separately in the ground, with the module (s) at least 3 (4) meters off the ground. In the photovoltaic (PV) solar power plant projects, PV solar panel (SP) support structure is one of the main elements and limited numerical studies exist on PVSP ground mounting.



Photovoltaic support structure system specification

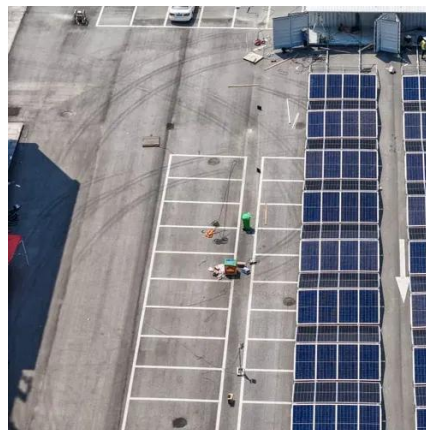


[Structures and support profiles for photovoltaic modules](#)

The support structures are the elements that allow the fixing of the modules on the roofs where the photovoltaic installation must be housed, constituting a main element of the solution. Circutor offers a ...

[Advances in Mounting Structures for Photovoltaic Systems](#)

Our research comprehensively analyzes the mechanical, environmental, and regulatory factors influencing material selection and structural design in PV mounting systems.



[Design and Analysis of Steel Support Structures Used in ...](#)

st on PVSP ground mounting steel frames to be a research gap that has not be addressed adequately in the literature. In this paper, aiming to provide a contribution to this gap, a PVSP steel

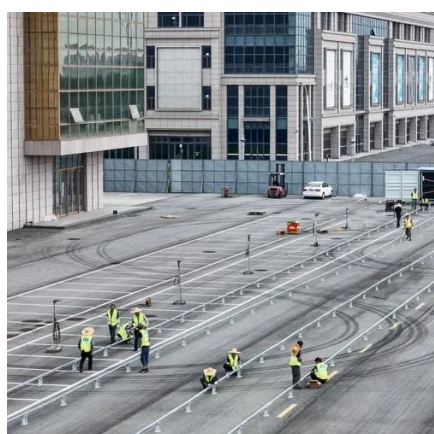
[Design framework for double-layer flexible photovoltaic support](#)

To better understand the structural behavior and prevent potential failure, this study presents a simplified analytical model for the design of double-layer flexible cable photovoltaic ...



[Structural Requirements for Solar Panels -- Exactus Energy](#)

Most of the time, solar panels need a mounting system that gives them a stable base and structural support. These can be made of strong, light aluminum or heavy-duty steel and can be ...



[Specifications of photovoltaic panel flexible support base](#)

The Federal Energy Management Program (FEMP) provides this tool to federal agencies seeking to procure solar photovoltaic (PV) systems with a customizable set of technical specifications.



[Design Specifications for Photovoltaic Support Equipment](#)

The document discusses the key aspects of evaluating the mechanical design of a photovoltaic (PV) system, including reviewing drawings, assembly instructions, material selection, and



[Photovoltaic support foundation structure drawings](#)



The information contained in this application note is intended to provide designers of First Solar PV module mounting and support systems with both minimum requirements and



[Solar Photovoltaic: SPECIFICATION, CHECKLIST AND GUIDE](#)

The RERH specifications and checklists take a builder and a project design team through the steps of assessing a home's solar resource potential and defining the minimum structural and system ...

[Standards for the Module Support Structure](#)

This page on standards for the module support structure in solar home systems is an extract of the publication: Quality Standards for Solar Home Systems and Rural Health Power Supply



51.2V 300AH



Contact Us

For catalog requests, pricing, or partnerships, please visit:

<https://www.iwap.com.pl>

Phone: +34 919 456 782

Email: info@iwap.com.pl

Scan the QR code to access our WhatsApp.

