



# Power Plant Area





## Power Plant Area



### Global Power Plants , illustreets

The database covers approximately 35,000 power plants from 167 countries and includes thermal plants (e.g. coal, gas, oil, nuclear, biomass, waste, geothermal) and renewables (e.g. hydro, ...

### [Map of Coal, Gas, Nuclear, Hydro & Biomass Power Plants](#)

Coal, gas, nuclear, wind, hydro and biomass power plant health and safety pollution issues map. Search and share locations of power plant pollution, environment & community issues.



### [Power Plants Across the Globe \(World Map\), database.earth](#)

Data and information about power plants and their location across the globe, plotted on an interactive world map

## Power Plant

6.1 Power plant sites and large industrial complexes, including land areas and infrastructure  
Many power plants have been left unused for years or decades after they have been ...



### [Selection and Location of Power Plants: 14 Considerations](#)

However, the modern power plants are of large capacities and feed a grid which supplies power to large areas. As such other considerations become more significant than the consideration ...

### **WorldPowerData**

Explore the global power plant database with interactive maps, statistics, and insights



### **China Power Plants**

List of power plants in China from OpenStreetMap



### **Global Power Plants Map**



Global Power Plants Overview This template gives you an interactive map of power plants around the world. You can explore by energy source -- coal, gas, nuclear, hydro, solar, wind ...



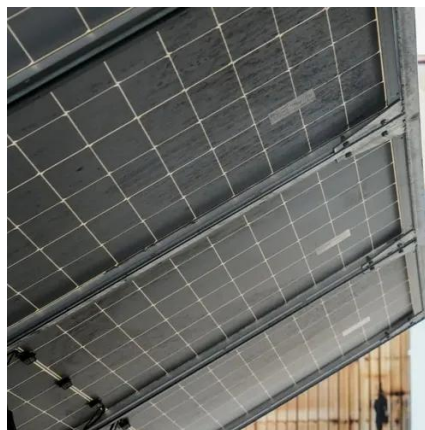
### [Power Plants and Neighboring Communities Mapping Tool](#)

The Power Plants and Neighboring Communities Mapping Tool (PPNC) is an interactive map that displays socioeconomic information of communities, along with the location and operating ...



### **Spatial energy density of large-scale electricity generation from power**

In total, our study covers 870 electric power plants worldwide, where not only the energy density but also the resulting land or sea area requirements to power the world are estimated.





## Contact Us

---

For catalog requests, pricing, or partnerships, please visit:

<https://www.iwap.com.pl>

Phone: +34 919 456 782

Email: [info@iwap.com.pl](mailto:info@iwap.com.pl)

Scan the QR code to access our WhatsApp.

