



Overview

This comprehensive guide breaks down the key differences between uninterruptible power supplies (UPS) and battery energy storage systems (BESS). We explain their functions, benefits, applications, and costs—plus real-world use cases and future trends. When power is lost, a UPS instantly delivers electricity to critical systems without interruption. In a data center, this ensures servers, networking gear, and cooling equipment continue operating even during a utility outage. Think of it as your safety net—the thing that kicks in immediately when everything else goes dark. A generator provides. ers lay out low-voltage power distribution and conversion for a b de ion - and energy and assets monitoring - for a utility-scale battery energy storage system entation to perform the necessary actions to adapt this reference design for the project requirements. TE's long-standing commitment to.



Power supply transformation BESS uninterruptible power supply large



[UPS vs. BESS: Key Differences and When to Use Each System](#)

This comprehensive guide breaks down the key differences between uninterruptible power supplies (UPS) and battery energy storage systems (BESS). We explain their functions, benefits, ...

[UPS, BESS, and Generator Integrated Critical Power Systems](#)

Here's an example of a holistic, integrated critical power system: an uninterruptible power supply (UPS) provides immediate power during an outage. In contrast, a battery energy storage ...

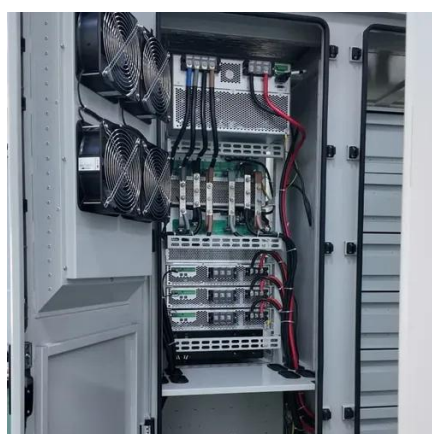


BATTERY ENERGY STORAGE SYSTEMS (BESS)

Our compact and modular power distribution blocks distribute or group single phase or three phase electrical circuits from a single input source to several devices in the branch circuit.

[UPS vs. BESS in Data Centers: Key Differences, Benefits, and Why ...](#)

In this guide, we'll explore the key differences between UPS systems and BESS, how they complement each other, and why hybrid architectures are becoming the new standard. Reliable ...



UPS & ESS

I. Double conversion on-line UPS diagram used as representative model. Other topologies will have similar solution needs at common power levels. II. Many other fuse options available based on ...

[Power supply transformation BESS uninterruptible power supply ...](#)

Sep 1, 2017 · The proposed technique focuses on operation of the BESS as an uninterruptible power supply (UPS). The algorithm detects the fault clearance using second-order differences



2MW / 5MWh
Customizable



[UPS and BESS Systems: Definitions, Applications, and Key](#)

This white paper explores two important technologies in this domain: Uninterruptible Power Supply (UPS) systems and Battery Energy Storage Systems (BESS).

How BESS Differs from UPS Systems



Discover the key differences between BESS and UPS systems and how they serve distinct roles in energy storage and power backup.



Battery Energy Storage Systems Report

by an agency of the U.S. Government. Neither the U.S. Government nor any agency thereof, nor any of their employees, makes any warranty, expressed or implied, or assumes any legal liability or ...

Utility-scale battery energy storage system (BESS)

The main goal is to support BESS system designers by showing an example design of a low-voltage power distribution and conversion supply for a BESS system and its main components.





Contact Us

For catalog requests, pricing, or partnerships, please visit:

<https://www.iwap.com.pl>

Phone: +34 919 456 782

Email: info@iwap.com.pl

Scan the QR code to access our WhatsApp.

