



Price of 100kWh Energy Storage Cabinet for Data Centers in Indonesia





Overview

With its factory-direct pricing, high efficiency, long lifespan, and safety, HighJoule's Outdoor Cabinet BESS Lithium Battery 100kWh is an ideal energy storage system choice. This project involves the delivery of six (6) customized 50kW / 100kWh energy storage cabinets to Indonesia, designed for a grid-connected (on-grid) application. The systems are currently in final assembly and testing and will be shipped soon. 2V/280Ah battery with over 8000 cycles at 70% DOD, ensuring stable long-term energy supply for commercial. HLC Sheet Metal Factory - Indonesia Energy Storage Cabinet Sheet Metal Processing Manufacturers, Providing Energy Storage Cabinet Shell Processing, Energy Storage Cabinet Design, Energy Storage Cabinet Customization, Large Source Factory, Good Quality, Excellent Price, Fast Delivery, Providing. Application: Suitable for places with high demand for electric capacity, such as large industrial and commercial enterprises, data centers, factories and mobile energy storage supply

2. Flexible and Effective

100kWh integrated energy storage system, two-level BMS battery management system. As Indonesia's capital races toward its 23% renewable energy target by 2025, containerized energy storage systems (CESS) have become the backbone of Jakarta's power infrastructure projects. Specifically designed for industrial and commercial applications, our energy storage solutions—available in 100KWh, 215KWh, and 300KWh.



Price of 100kWh Energy Storage Cabinet for Data Centers in Indonesia

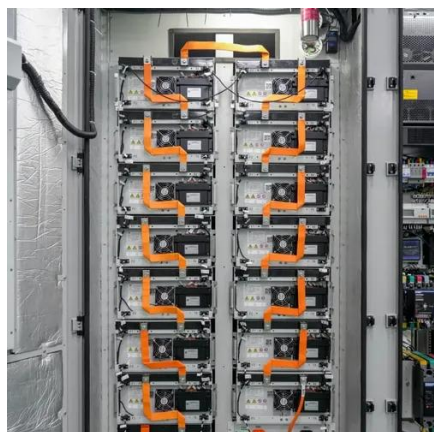


[Outdoor Cabinet BESS Lithium Battery 100kWh Indonesia](#)

With its factory-direct pricing, high efficiency, long lifespan, and safety, HighJoule's Outdoor Cabinet BESS Lithium Battery 100kWh is an ideal energy storage system choice.

[Battery 100KWh 215KWh 300kwh All In One Energy Storage cabinet ...](#)

Specifically designed for industrial and commercial applications, our energy storage solutions--available in 100KWh, 215KWh, and 300KWh capacities--promise to enhance your efficiency, sustainability, ...



[Kabinet Sistem Penyimpanan Energi Komersial 50KW 100kWh](#)

Sistem penyimpanan energi baterai pendingin udara Namkoo 50kW/100kWh, inverter baterai lithium terintegrasi terbaik, dan proteksi kebakaran bertingkat, penerapan cepat.

[100KWh/50KW Commercial and Industrial Energy Storage System](#)

Application: Suitable for places with high demand for electric capacity, such as large industrial and commercial enterprises, data centers, factories and mobile energy storage supply?



[Kabinet baterai sistem penyimpanan energi BESS 100kW 200kWh ...](#)

Kabinet baterai sistem penyimpanan energi BESS 100kW 215kWh untuk solusi UPS industri dan komersial



[Liquid-cooled energy storage cabinet-100kW/215\(233\)kWh](#)

Beranda - Solusi Penyimpanan Energi Komersial & Industri - Kabinet penyimpanan energi berpendingin cairan-100kW/215 (233) kWh



[Custom 50kW-Multi-MW BESS Project , 6x100kWh ESS for Indonesia](#)

This project involves the delivery of six (6) customized 50kW / 100kWh energy storage cabinets to Indonesia, designed for a grid-connected (on-grid) application.



[Indonesia Energy Storage Cabinet Factory, Energy Storage ...](#)



Find Customized PV Storage Cabinets from Professional Manufacturers Now Read more



[Jakarta Container Energy Storage Cabinet Manufacturer: Powering](#)

As Indonesia's capital races toward its 23% renewable energy target by 2025, containerized energy storage systems (CESS) have become the backbone of Jakarta's power infrastructure projects.



[Cooli Smart 100kW/215KWH Energy Storage Air-cooled Cabinet](#)

Unlock energy independence and maximize ROI with the Cooli Smart 100kW/215kWh Air-Cooled Energy Storage Cabinet. Engineered for commercial and industrial resilience, this high-density ...





Contact Us

For catalog requests, pricing, or partnerships, please visit:

<https://www.iwap.com.pl>

Phone: +34 919 456 782

Email: info@iwap.com.pl

Scan the QR code to access our WhatsApp.

