



SKYWORTH photovoltaic panel size parameter settings





Overview

nsity, temperature range and environmental protection. This product specification describes the type, size, str y bills to determine your avera ncluding anufacturer, duct Specifications carefully before using this guide. Page 1 This Design Guide was crea nsity, temperatu e range and. Skyworth helps you turn sunlight into long-term savings—cutting your electricity bills, adding value to your home, and giving you more control over your energy future. Save more every month with Skyworth home solar Seamless rooftop solar installation, hassle-free Reduce grid reliance with optimized. Skyworth's product line follows the industry pattern where higher wattage generally requires larger dimensions: This size progression isn't linear - the 620W model's compact dimensions demonstrate how newer PERC cell technology achieves higher output without proportional size increases, much like. For households using solar photovoltaic power generation, Skyworth Photovoltaic provides single-phase AC coupled inverters with power from 4KW-6KW, which will give your home stable and reliable power supply - even in the event of grid. ?

?

?

?

?

?

?

?

?

?

?

?

We always insist on offering innovative. Solar panel size refers to the total amount of power a solar panel can generate over a period of time; Solar panel dimensions refers to the physical size of a solar panel; Solar panel sizes and wattage range



from 250W. In. fortunately not listed at all. The dimensions of 72-cell solar panels are as follows. The metal case class of the display as declared by the manufacturer. Approximate dimensions: LINE SOLAR PANEL SPECIFICATIONS 540mm x 600mm. Lab here: Download Example Solar Panel Specifications to maintain solar panel efficiency at 20°C. Based on the TV series is the Skyworth S82 with.



SKYWORTH photovoltaic panel size parameter settings



[Skyworth photovoltaic solar panel specifications](#)

If you are trying to compare one PV panel to another, it is helpful to understand the key technical parameters - or solar panel specifications - that impact performance.

[Skyworth photovoltaic panel size specification diagram](#)

For households using solar photovoltaic power generation, Skyworth Photovoltaic provides single-phase AC coupled inverters with power from 4KW-6KW, which will give your home stable and

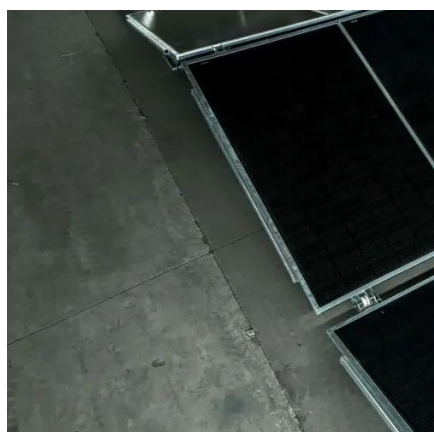
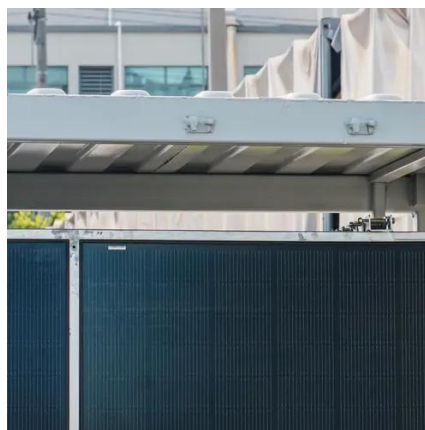


[SKYWORTH photovoltaic panel size parameters](#)

Wide input voltage range (90V-550V) to support various solar panel and string designs. Support WIFI/GPRS remote monitoring, users can monitor the status of PV system through mobile phone or ...

[Skyworth Photovoltaic Panels: Dimensions and Technical Specifications](#)

Most Skyworth panels maintain a 35mm profile - thinner than a standard door frame but robust enough to withstand 25mm hail at 88km/h. This slim design allows easier integration with roof textures, ...



Download center

Beijing Skyworth Clean Energy Technology Co., Ltd. (Overseas Business) Room 608, Building #6, Skyworth Innovation Valley, TangTou Road No.1, ShiYan, Bao'An, ShenZhen, China

Residential PV-SKYWORTH

Skyworth helps you turn sunlight into long-term savings--cutting your electricity bills, adding value to your home, and giving you more control over your energy future.



Skyworth

The most important solar panel specifications include the short-circuit current, the open-circuit voltage, the output voltage, current, and rated power at 1,000 W/m² solar radiation, all

[Skyworth photovoltaic panel size specification table](#)



Solar panel size refers to the total amount of power a solar panel can generate over a period of time; Solar panel dimensions refers to the physical size of a solar panel; Solar panel sizes and wattage ...



[Skyworth photovoltaic panel assembly size specifications](#)

Solar panels (also called solar modules) multiple solar cell installation assembly, is the core part of the solar power system, is also the most important component of the solar power system.



Solar Panels and Inverters

Skyworth PV developed full series solar modules including PERC cells and HJT high efficiency cells with different configuration to meet various project requirements. Our module power ranges from 215W to ...





Contact Us

For catalog requests, pricing, or partnerships, please visit:

<https://www.iwap.com.pl>

Phone: +34 919 456 782

Email: info@iwap.com.pl

Scan the QR code to access our WhatsApp.

