



Safety distance calculation for communication base station energy storage system





Overview

- The distance between battery containers should be 3 meters (long side) and 4 meters (short side). If a firewall is installed, the short side distance can be reduced to 0. The EASE Guidelines on Safety Best Practices for Battery Energy Storage Systems (BESS) are designed to support the safe deployment of outdoor, utility-scale lithium-ion (Li-ion) BESS across Europe. What are the standards for battery energy storage systems (Bess)?

As the industry for battery energy. Battery Energy Storage Systems, or BESS, help stabilize electrical grids by providing steady power flow despite fluctuations from inconsistent generation of renewable energy sources and other disruptions. While BESS technology is designed to bolster grid reliability, lithium battery fires at some. ers lay out low-voltage power distribution and conversion for a b de ion - and energy and assets monitoring - for a utility-scale battery energy storage system entation to perform the necessary actions to adapt this reference design for the project requirements. Large-scale fire test results are encouraging — they suggest that even tightly clustered battery containers might not propagate fire.



Safety distance calculation for communication base station energy st



[Battery Energy Storage Systems: Main Considerations for Safe](#)

This webpage includes information from first responder and industry guidance as well as background information on battery energy storage systems (challenges & fires), BESS installation ...

[Safety distance specification for battery energy storage system of](#)

The EASE Guidelines on Safety Best Practices for Battery Energy Storage Systems (BESS) are designed to support the safe deployment of outdoor, utility-scale lithium-ion (Li-ion) BESS across ...



[Evaluated minimum safe distances for mobile ...](#)

In Table 1 are presented the minimum safe distances for GSM 900, GSM 1800 and 3G base stations, in terms of public and occupational exposure.



[Optimization Control Strategy for Base Stations Based on ...](#)

This method excavates the peak shaving potential of 5G communication base stations based on the spatiotemporal characteristics of communication base stations.

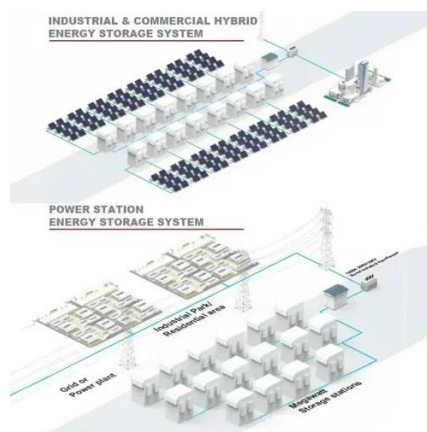


[Distance between rooftop communication base station energy ...](#)

How far apart should storage units be positioned? Therefore, if you install multiple storage units, you have to space them three feet apart unless the manufacturer has already done large-scale fire ...

[Battery Energy Storage Systems: The Critical Role of Site Layout in](#)

Our risk engineers collaborate with facility planners to review battery yard layouts, checking for adequate distances not just between batteries but also from transformers, control rooms, property fences and ...



[Safety Distance and Power Density Calculations for GSM ...](#)

This paper aims to assess the effects (if any) for the, low-level non-ionizing RF energy of cellular systems have on human health and to determine the safety limits needed to protect human health.



Essential Safety Distances for Large-Scale Energy Storage Power Stations

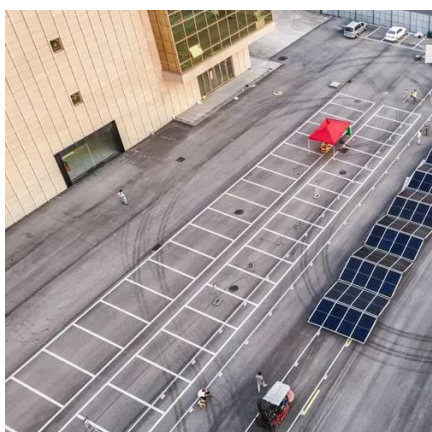


Discover the key safety distance requirements for large-scale energy storage power stations. Learn about safe layouts, fire protection measures, and optimal equipment spacing to ...



[Utility-scale battery energy storage system \(BESS\)](#)

This reference design focuses on an FTM utility-scale battery storage system with a typical storage capacity ranging from around a few megawatt-hours (MWh) to hundreds of MWh.



[Vertical protection distance of communication base station energy](#)

Discover the key safety distance requirements for large-scale energy storage power stations. Learn about safe layouts, fire protection measures, and optimal equipment





Contact Us

For catalog requests, pricing, or partnerships, please visit:

<https://www.iwap.com.pl>

Phone: +34 919 456 782

Email: info@iwap.com.pl

Scan the QR code to access our WhatsApp.

