



Safety distance of energy storage power station





Safety distance of energy storage power station

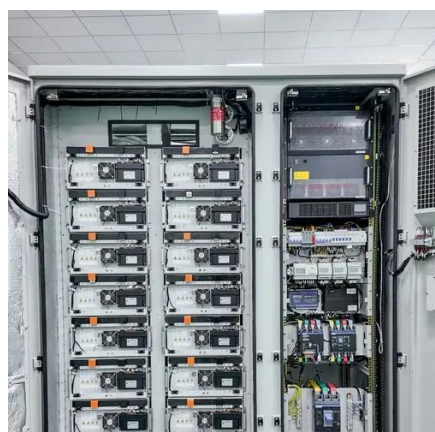


Safety as a Core Value , Occupational Safety and Health Administration

How are you ensuring safety and health are a core value of your organization? The Occupational Safety and Health Administration (OSHA) is initiating an effort to discover how safety and health programs, ...

[Battery Energy Storage Systems: Main Considerations for Safe](#)

This webpage includes information from first responder and industry guidance as well as background information on battery energy storage systems (challenges & fires), BESS installation ...



[Safety distance requirements for energy storage power ...](#)

Far-reaching standard for energy storage safety, setting out a safety analysis approach to assess H& S risks and enable determination of separation distances, ventilation

Safety Management

Existing safety and health programs (lockout/tagout, confined spaces, process safety management, personal protective equipment, etc.). Input from workers, including surveys or minutes from safety ...



[SAFETY DISTANCE SPECIFICATIONS FOR ENERGY STORAGE POWER STATIONS](#)

Battery safety of energy storage power stations
This document outlines a framework for ensuring safety in the battery energy storage industry through rigorous standards, certifications, and proactive ...



Safety and Health Topics

OSHA's Safety and Health Topics pages provide regulatory and enforcement information, hazard identification and controls as well as best practices and other resources to assist employers, workers ...



[Safety distance of energy storage projects](#)

This work describes an improved risk assessment approach for analyzing safety designs in the battery energy storage system incorporated in large-scale solar, which can enhance accident prevention and ...

[Recommended Practices for Safety and Health Programs](#)



The main goal of safety and health programs is to prevent workplace injuries, illnesses, and deaths, as well as the suffering and financial hardship these events can cause for workers, their families, and ...



Solar



What is the explosion-proof distance of the energy storage power station?

Based on the title, the explosion-proof distance of the energy storage power station refers to the safe distance required to minimize the risk of injury or damage during an explosion event.

[Safety and health at work , International Labour Organization](#)

Despite this important decision and the significant progress in occupational safety and health (OSH), work-related accidents and diseases still occur too frequently, with devastating ...



Essential Safety Distances for Large-Scale Energy Storage Power Stations

Discover the key safety distance requirements for large-scale energy storage power stations. Learn about safe layouts, fire protection measures, and optimal equipment spacing to ...

[Jiangsu issues safety standards for user-side energy storage](#)



The document specifies that it applies to the construction and operation of lithium-ion/sodium-ion battery (including solid-state batteries) energy storage systems and power stations with a voltage level of ...



[Home , Occupational Safety and Health Administration](#)

Here's how you know U.S. Department of Labor Occupational Safety and Health Administration

[Safety Distance of Electrochemical Energy Storage Power ...](#)

Determining optimal safety distances for energy storage systems requires balancing regulatory compliance, technological innovation, and site-specific conditions.



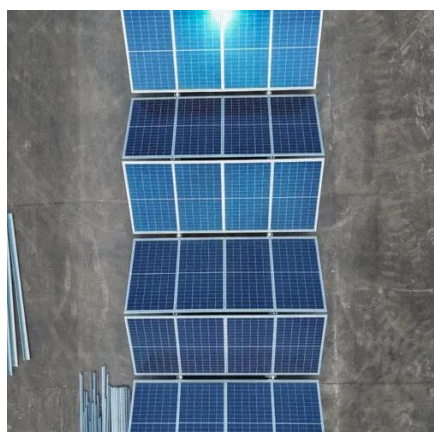
Safety Management

Recommended Practices for Safety and Health Programs Hazard Prevention and Control Effective controls protect workers from workplace hazards; help avoid injuries, illnesses, and incidents; ...

[Energy Storage Safety Distance Requirements: What You Need ...](#)



Your Next Move While regulations catch up with innovation, here's a pro tip: Treat energy storage safety distance requirements like your smartphone's charging cable - regularly check for updates, expect ...

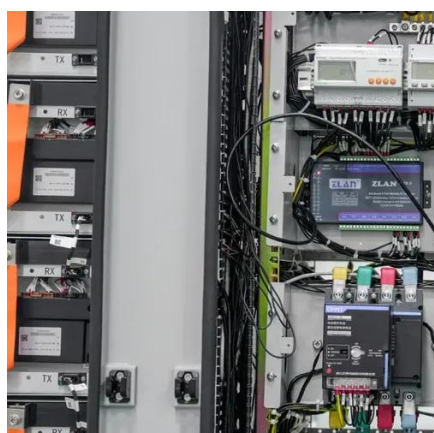


Help for Employers

The Occupational Safety and Health Act of 1970 created OSHA, which sets and enforces protective workplace safety and health standards. There are OSHA standards for construction, agriculture, ...

[Alphabetical Listing of Topics , Occupational Safety and Health](#)

Restaurant Safety for Teen Workers Restrooms and Sanitation Requirements Ricin Robotics S Safe + Sound Campaign Safety and Health Programs Sampling and Analysis Sawmills Scaffolding Sealant, ...



[Energy storage power station setback distance](#)

For example, the safety distance for large-scale energy storage from significant risk points (fire, explosion) is 50 meters, medium-scale is 50 meters, and small-scale is 50

Training



Safety Starts with Training OSHA requires employers to provide training to workers who face hazards on the job. We create training materials, distribute training grants to nonprofit organizations, and provide ...





Contact Us

For catalog requests, pricing, or partnerships, please visit:

<https://www.iwap.com.pl>

Phone: +34 919 456 782

Email: info@iwap.com.pl

Scan the QR code to access our WhatsApp.

