



Should photovoltaic panels be placed high up





Overview

Solar panels should be mounted at a height of 3.25" from the roof's surface to ensure optimal performance. This measurement takes into account the seam of the SSMR, typically 1.5" to 3" in height, the mounting hardware, adding approximately $\frac{3}{4}$ " and the module frame. Positioning solar panels at the best angle is essential for maximizing the efficiency of your solar energy system. This article covers clearance recommendations, mounting methods, wind and snow considerations, and practical installation steps to help homeowners and installers make.



Should photovoltaic panels be placed high up



[Solar Panels Vertical Or Horizontal \(Which Orientation Is Best!\)](#)

In the Northern Hemisphere, your solar panels should face south to get the most sunlight. In the Southern Hemisphere, the panels should orient towards the true north.

[What's the Best Angle for Solar Panels?.. EnergySage](#)

For maximum output, the sweet spot for solar panels in the ...



[What's the Best Angle for Solar Panels?.. EnergySage](#)

For maximum output, the sweet spot for solar panels in the continental U.S. is facing roughly south and tilted between 15 and 40 degrees, according to the Department of Energy. That ...

Can I Mount Solar Panels Vertically?

The short answer is yes--solar panels can be mounted vertically. This setup is less common than traditional angled installations but is becoming more popular in specific scenarios.



[Optimal Solar Panel Height Above Roof for Efficiency and Safety](#)

When installing solar panels, determining the ideal height above the roof is crucial for maximizing energy production, ensuring safety, and maintaining system longevity. The height of solar ...



[How High Should Solar Panel Mounts Be? Finding the Sweet Spot for ...](#)

Not ideal, right? The height of photovoltaic brackets plays a bigger role than most people realize - it's not just about keeping panels off the dirt. Let's break down the science behind finding that Goldilocks ...



[What is the Best Angle for Solar Panels? Maximizing the Efficiency](#)

Proper orientation ensures panels capture sunlight when it is most abundant and at its highest intensity, maximizing energy production. This alignment is crucial because it establishes the foundation for the ...



[Optimal Solar Panel Angle: Maximizing Efficiency and Energy Output](#)



Discover how to choose the right angle for your solar panels based on your location and seasonal variations. Proper orientation and tilt ensure maximum sunlight absorption, enhancing the ...

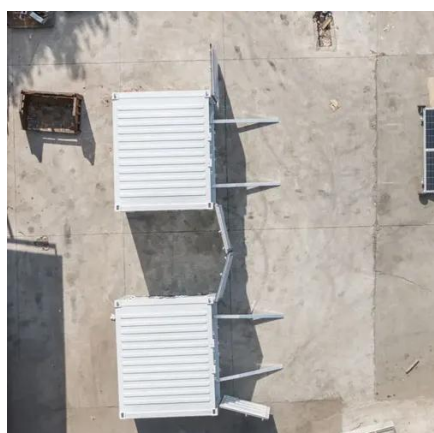


[How High Off The Roof Should Solar Panels Be Mounted?](#)

Mounting solar panels too close to the roof's surface can lead to several risks. Lack of proper airflow may cause overheating, reducing efficiency and potentially damaging the panels.

[Solar Panel Direction & Orientation: 2025 Complete Guide](#)

Optimizing your solar panel direction and orientation is one of the most impactful decisions you can make for your solar investment. The right positioning can increase your energy production ...



[Solar Panel Height Above Roof: Optimal Clearance and Installation](#)

Several variables guide the ideal solar panel height above roof: roof type, local climate, wind exposure, desired tilt angle, and maintenance needs. Each project must balance these factors ...



Contact Us

For catalog requests, pricing, or partnerships, please visit:

<https://www.iwap.com.pl>

Phone: +34 919 456 782

Email: info@iwap.com.pl

Scan the QR code to access our WhatsApp.

