



Slope installation of photovoltaic panel bracket





Overview

For most homeowners, the ideal angle for a solar panel installation is close to or equal to the latitude of your home. This angle is typically between 30 degrees and 45 degrees. Install a mounting system for solar thermal or solar photovoltaic panels. PV Flat Roof Layout Illustrates panel layout on flat concrete roofs, with bracket placement, access paths, and. To ensure the smooth installation of photovoltaic system brackets and meet design requirements, Guidance Method For The Installation Of PV System Brackets are provided, including ground-mounted, rooftop, adjustable tilt angle, floating, Building-Integrated Photovoltaics (BIPV), bifacial, and. Installing solar panels on a sloped roof begins with careful preparation. I start by assessing the roof's structural integrity.



Slope installation of photovoltaic panel bracket



Solar Panel Installation Diagram

Show the layout of solar panel on sloping roofs or color steel tile roofs, including key parameters such as arrangement direction, module spacing, and installation Angle.

[How to quickly install solar photovoltaic on a slope](#)

Choosing the right mounting system is critical for a successful installation on sloped surfaces. Various systems exist, including fixed mounts, adjustable mounts, and tracking ...



[How to Install Solar Panel Mounting Brackets: Ground & Roof ...](#)

Discover how to install solar panel mounting brackets for any rooftop or ground setup in this detailed step-by-step guide. Whether you're working on sloped r

[How to Install Solar Panels on a Sloped Roof: Step-by-Step Guide for](#)

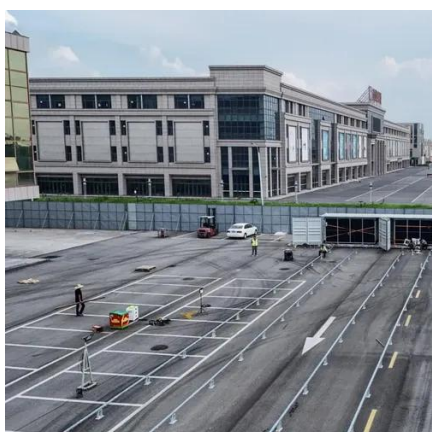
Learn how to effectively install solar panels on a sloped roof with our detailed guide. Discover the benefits, step-by-step installation process, safety tips, and maintenance advice to maximize energy

...



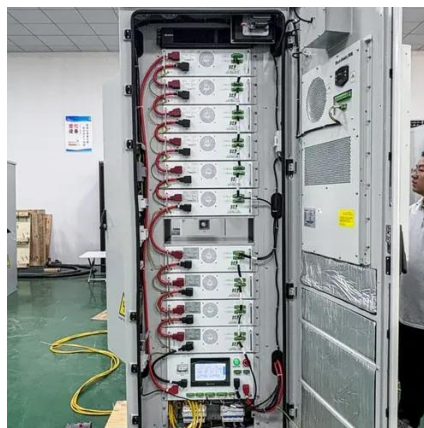
[Guidance Method For The Installation Of PV System Brackets](#)

By following these detailed guidelines, photovoltaic projects can ensure the successful installation and long-term performance of various types of photovoltaic system brackets.



[How To Install Solar Panel Mounting Brackets](#)

Whether you're working on a tile roof, metal roof, or ground-mounted setup, proper bracket installation guarantees safety and optimal energy harvest. This comprehensive guide covers everything from ...



Photovoltaic panel installation slope

For most homeowners, the ideal angle for a solar panel installation is close to or equal to the latitude of your home. This angle is typically between 30 degrees and 45 degrees.



Roof Anchor System for Solar Panels



A guide for choosing, installing, and flashing roof anchoring systems for solar panels.



[Slope Roof Photovoltaic Bracket Design: Blueprint for Solar Success](#)

Ever wondered why some rooftop solar installations look like they're dancing with gravity while others sit as snug as a bug on a steep roof? The secret sauce lies in the photovoltaic bracket design drawing ...

Slope Solar 101: Key Requirements for Installing Photovoltaic Panels ...

With global solar capacity projected to triple by 2030, engineers are increasingly eyeing slopes for PV installations. But here's the kicker: slopes aren't just angled surfaces - they're dynamic ...





Contact Us

For catalog requests, pricing, or partnerships, please visit:

<https://www.iwap.com.pl>

Phone: +34 919 456 782

Email: info@iwap.com.pl

Scan the QR code to access our WhatsApp.

