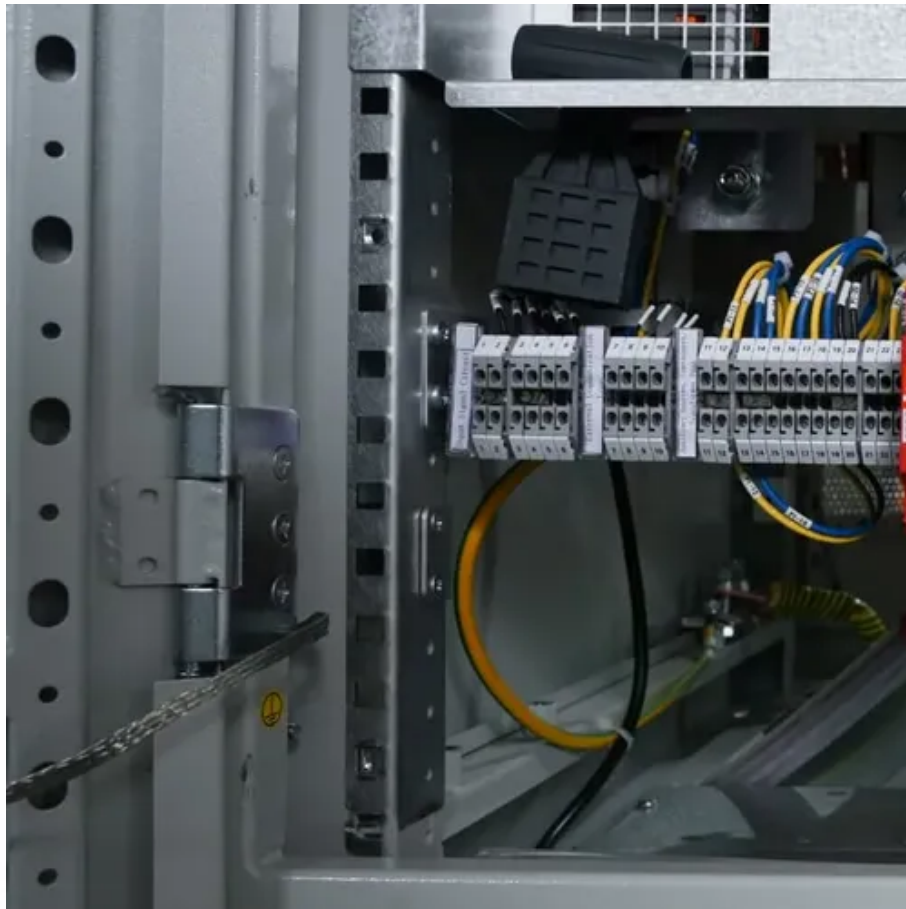




Solar container communication station lithium-ion battery maintenance tower climbing plan and process





Overview

The paper proposes a novel planning approach for optimal sizing of standalone photovoltaic-wind-diesel-battery power supply for mobile telephony base stations. The approach is based on integration of a compr. Pursuant to the OSH Act, employers must comply with safety and health standards and regulations issued and enforced either by OSHA or by an OSHA-approved state plan. While BESS technology is designed to bolster grid reliability, lithium battery fires at some. Solar container communication lithium-ion bat efficiency, promote sustainability, and increase energy resilience. How exactly does Battery Energy Storage System work?

Battery Energy Storage System works by storing electr city in lithium-ion batteries that are housed i tainerized lithium-ion batteries. An integrated Energy Storage System (ESS) combines solar generation with LiFePO4 battery storage and intelligent management.



Solar container communication station lithium-ion battery maintenance



Communication Tower Best Practices

Employees climb communication towers to perform construction and maintenance activities and face numerous hazards, including fall hazards, hazards associated with structural collapses and improper ...

[Solar container communication station lithium-ion battery project](#)

Containerized lithium-ion batteries to store and supply electricity. These containers are designed to be easily transportable and can be installed in various locations depending on the



[Battery check of solar container communication station](#)

A Container Battery Energy Storage System (BESS) refers to a modular, scalable energy storage solution that houses batteries, power electronics, and control systems within a

[Battery Energy Storage Systems: Main Considerations for Safe](#)

The facility held about 15,000 nickel manganese cobalt lithium-ion batteries. Following the incident, EPA has required the Gateway facility to conduct extensive environmental monitoring ...



FLEXIBLE SETTING OF MULTIPLE WORKING MODES



REMOTE CONTROL COMMUNICATION TOWER BASE STATION

We are committed to excellence in solar container and energy storage solutions. With complete control over our manufacturing process, we ensure the highest quality standards in every solar container ...



Communication network cabinet base station solar container ...

What is a telecom battery backup system? A telecom battery backup system is a comprehensive portfolio of energy storage batteries used as backup power for base stations to ensure a reliable and ...



TAX FREE

Product Model
HJ-ESS-215A(100KW/215KWh)
HJ-ESS-115A(50KW 115KWh)

Dimensions
1600*1280*2200mm
1600*1200*2000mm

Rated Battery Capacity
215KWH/115KWH

Battery Cooling Method
Air Cooled/Liquid Cooled



ENERGY STORAGE SYSTEM

MOBILE COMMUNICATION TOWER

The containerized energy storage system is composed of an energy storage converter, lithium iron phosphate battery storage unit, battery management system, and pre-assembled container. [pdf]

COMMUNICATION BASE STATION LITHIUM BATTERY POWER



The solar deep-cycle battery bank stores the electrical energy generated by the solar panels, ensuring a stable power supply to the communication base stations even when there is no sunlight or insufficient ...



[Shipping Container Solar Systems in Remote Locations: An Overview](#)

A Higher Wire system includes solar panels, a lithium iron phosphate battery, an inverter--all housed within a durable, weather-resistant shell. Our systems can be deployed quickly ...

[How to Power Remote Telecom Towers with Solar + LiFePO4 ESS](#)

Discover how solar power systems and LiFePO4 energy storage offer reliable, sustainable solutions for remote telecom towers. Reduce costs, enhance uptime, and achieve energy ...





Contact Us

For catalog requests, pricing, or partnerships, please visit:

<https://www.iwap.com.pl>

Phone: +34 919 456 782

Email: info@iwap.com.pl

Scan the QR code to access our WhatsApp.

