



# Solar telecom integrated cabinet inverter grid-connected equipment mailbox





## Solar telecom integrated cabinet inverter grid-connected equipment



### [HLBWG Photovoltaic Grid-Connected Cabinet](#)

HLBWG Photovoltaic Grid-Connected Cabinet It can be used in solar ...

### [Integrated Solar & Battery Cabinet for Remote Telecom Systems](#)

Designed for remote locations, it integrates solar controllers, inverters, and lithium battery packs to ensure stable and continuous power for telecom equipment, surveillance systems, and off-grid ...



### [Indoor Photovoltaic Telecom Energy Cabinet](#)

LZY Energy's Indoor Photovoltaic Energy Cabinets are solar-powered integrated equipment especially designed to meet the requirements of communication base station rooms.

### [Solar telecom integrated cabinet hybrid energy dedicated inverter ...](#)

Discover how a grid-connected photovoltaic inverter and battery system enhances telecom cabinet efficiency, reduces costs, and supports eco-friendly operations.



### Solar-Powered Telecom Cabinet

With this solar-powered solution, telecom operators can reduce their reliance on the grid and ensure uninterrupted communication services even in remote areas. This telecom cabinet is equipped with a ...



### [HLBWG Photovoltaic Grid-Connected Cabinet](#)

HLBWG Photovoltaic Grid-Connected Cabinet It can be used in solar photovoltaic power generation systems, and can also be used to convert, distribute and control electrical energy between ...



### [Grid-connected photovoltaic inverters: Grid codes, topologies and](#)

The reader is guided through a survey of recent research in order to create high-performance grid-connected equipments. Efficiency, cost, size, power quality, control robustness and ...



### NEMA Enclosures & Integrated Solutions



Whether for remote telecom stations, solar hybrid systems, or industrial automation units, we provide fully assembled cabinets with integrated power, cooling, and control systems for plug-and-play ...

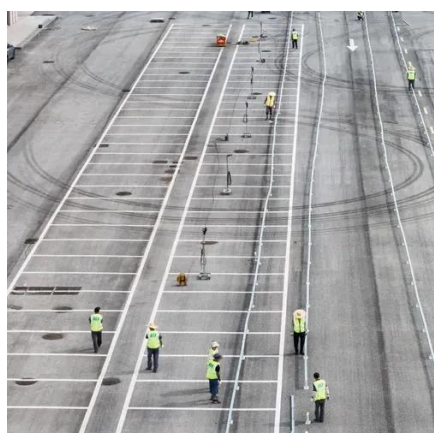


### [Smart Power Cabinet Solutions , PDF , Electrical Grid](#)

The Shoto smart power cabinet is a turnkey solution for powering communication base stations. It integrates multiple energy sources like solar, wind, grid, and batteries into a hybrid system. The ...

### [Grid-connected Photovoltaic Inverter and Battery System for Telecom](#)

Discover how a grid-connected photovoltaic inverter and battery system enhances telecom cabinet efficiency, reduces costs, and supports eco-friendly operations.



### **Telco Towerbox**

The GPT Telco TowerBox is a modular, all in one, plug and play hybrid power system for off-grid telecom towers. Combining solar, smart battery storage, and diesel backup, it ensures 24/7 uptime ...



## Contact Us

---

For catalog requests, pricing, or partnerships, please visit:

<https://www.iwap.com.pl>

Phone: +34 919 456 782

Email: [info@iwap.com.pl](mailto:info@iwap.com.pl)

Scan the QR code to access our WhatsApp.

