



Specifications of red and black lines of photovoltaic panels





Overview

The RERH specifications and checklists take a builder and a project design team through the steps of assessing a home's solar resource potential and defining the minimum structural and system components needed to support a solar energy system. The black line usually refers to the grid lines, which are conductive pathways for electricity produced by solar cells, while 2. The red line is. The Renewable Energy Ready Home (RERH) specifications were developed by the U. The quality of power shall comply with NRS 048-2, i. the combined voltage disturbances caused by the specific EG and other customers, added to normal background voltage disturbance tri ution System (up 57- dard for I ter on stems -. Full black solar modules with black backsheets are especially important in residential applications that value aesthetics over performance. It is especially important to keep the solar cell colours uniform on full black panels to prevent blotchy colours on black roofs. Exceptional low-light performance and high sensitivity to light across the entire solar spectrum. herein and may belongs to Photovoltaic Foundry Pte. not and may not be copied, reproduced, or edited by be any copied, reproduced, or edited by any person without prior written person without prior written permission.



Specifications of red and black lines of photovoltaic panels



[Solar Photovoltaic: SPECIFICATION, CHECKLIST AND GUIDE](#)

Parameters of photovoltaic panels (PVPs) is necessary for modeling and analysis of solar power systems.

[Red and black lines of photovoltaic panels](#)

Solar panel wires and cables help you extend the connection between solar panels and power stations. This Jackery guide will help you understand the pros and cons of each type, so you can pick the one ...



[Technical specifications for solar PV installations](#)

100 kW; Non grid connected systems up to 100 kW; The guideline will provide minimum specifications and performance requirements for system components, connection works, i. st. llations, ...

[Solar Photovoltaic: SPECIFICATION, CHECKLIST AND GUIDE](#)

The RERH specifications and checklists take a builder and a project design team through the steps of assessing a home's solar resource potential and defining the minimum structural and system ...



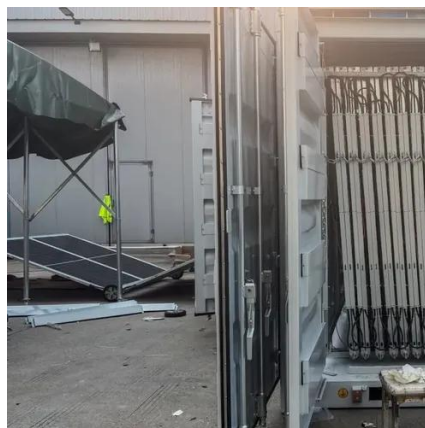
[What are the black and red lines of solar panels? , NenPower](#)

Black lines, which are the grid lines, function as conduits for electricity produced by the solar cells, while red lines, often termed bus bars, facilitate the collection and distribution of this ...



[1000ft 10 AWG Copper PV Wire , Black and Red](#)

Designed for interconnection wiring in both grounded and ungrounded photovoltaic systems, it delivers outstanding performance and long-term durability across various voltage levels. This product includes ...



[Analysis of specifications of solar photovoltaic panels](#)

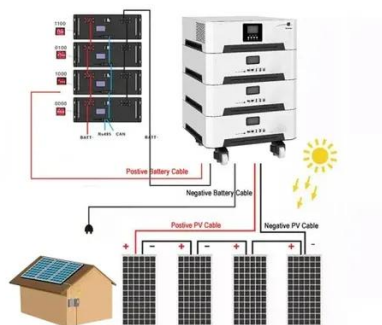
Parameters of photovoltaic panels (PVPs) is necessary for modeling and analysis of solar power systems.



[Solar Panel Global Database, ENF Photovoltaic Directory](#)



A global solar panel directory with advanced filters that lets you review and compare panels. Pictures, datasheets, PDFs are shown.



BlueSolar Panels

The BlueSolar Panels require exceptionally low light output and have high sensitivity to light. Find a dealer near you.



[Building Integrated Photovoltaic System \(BiPV\)](#)

A total of 24 BiPV panels @ 8.4kWp will be used to construct the canopy, along with hybrid inverters and battery system to ensure a Zero Emission solution is achieved.



[High-efficiency Module, Longi solar module](#)

The release of the "Longi Life Cycle Standard" promotes the high-quality development of the photovoltaic industry. At the same time, the use of Longi standard orders has improved delivery ...



1075KWHH ESS



Contact Us

For catalog requests, pricing, or partnerships, please visit:

<https://www.iwap.com.pl>

Phone: +34 919 456 782

Email: info@iwap.com.pl

Scan the QR code to access our WhatsApp.

