



# Strengthen the protection of communication base station inverter facilities





## Overview

---

The protection of GSM and base station towers from lightning and overvoltage is provided by integrating external lightning systems, internal lightning systems, earthing, equipotential bonding and LV surge arrester protection techniques within the framework of IEC-62305 standard. The protection should use 10/350 $\mu$ s waveform surge protective device. This includes using lightning rods, down conductors, grounding systems, surge protection devices (SPDs), and ensuring proper bonding and. Therefore, the research on the lightning current distribution characteristics of the mobile communication base station has important theoretical significance and engineering application. They can store energy from various sources, including renewable energy, and release it when needed. It is also compulsory to provide protection against lightning strikes with direct.



## Strengthen the protection of communication base station inverter fac

---



### [THE LIGHTNING PROTECTION OF MOBILE COMMUNICATION ...](#)

Technological advancements are dramatically improving solar storage container performance while reducing costs. Next-generation thermal management systems maintain optimal operating ...

### [Communication base station battery lightning protection level](#)

Protection against indirect lightning strikes on electrical networks must be treated globally. ABB Soulé offers a complete range of lightning arresters adapted to this approach.



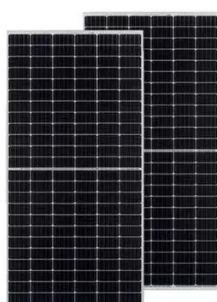
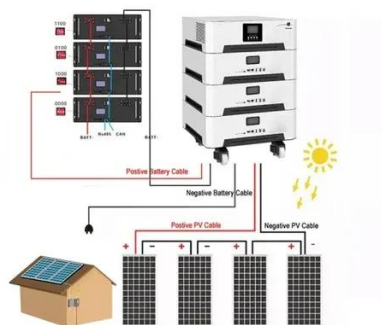
### [Lightning protection solution for telecom communication base stations](#)

The lightning arrester for the RuTian feeder is installed at the connection between the antenna and the feeder to prevent lightning from entering the main equipment of the base station ...



### [How to protect the inverter of communication base station from ...](#)

The protection of GSM and base station towers from lightning and overvoltage is provided by integrating external lightning systems, internal lightning systems, earthing, equipotential bonding and LV surge ...



### [Protect national communication base station inverter](#)

The communication base station lightning arrester remains the frontline defense against nature's voltage spikes, yet industry reports show 23% of telecom operators still use decade-old

### [Securing Backup Power for Telecom Base Stations - leagend](#)

To secure backup power for telecom base stations, operators must adopt a multi-faceted approach that covers system design, installation, maintenance, and security.



### [Lightning and Surge Protection for Communication Station](#)

Install lightning rods, grounding, surge protectors, shielding, and follow standards for effective communication station protection.

### [LIGHTNING PROTECTION SOLUTION FOR TELECOM](#)

...



Which battery is best for telecom base station backup power? Among various battery technologies, Lithium Iron Phosphate (LiFePO4) batteries stand out as the ideal choice for telecom base station ...

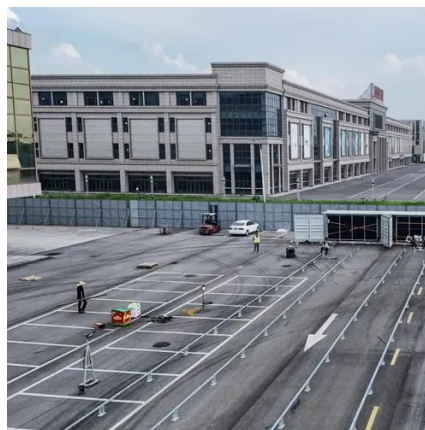


### Composition of the lightning protection system for the ...

The protection of GSM and base station towers from lightning and overvoltage is provided by integrating external lightning systems, internal lightning systems,

### Replace the lightning protection of the communication base ...

This solution simplifies the complex base station ground network engineering by using the equipment method, and completely isolates the impact between lightning protection grounding,





## Contact Us

---

For catalog requests, pricing, or partnerships, please visit:

<https://www.iwap.com.pl>

Phone: +34 919 456 782

Email: [info@iwap.com.pl](mailto:info@iwap.com.pl)

Scan the QR code to access our WhatsApp.

