



The installation distance of the rear row of photovoltaic panels on the roof





Overview

Typically, the spacing between solar roof mounts ranges from 4 to 8 feet, with most installations being about 6 feet apart. In this example, we use a Maysun Solar module with a width of 39. A smaller altitude angle means longer shadows and therefore larger required spacing. $41 \approx$. If the installation is to be installed on the ground or on a flat roof, it is extremely important to arrange the next rows of the installation in such a way that the shadow of the previous row does not obscure the next one. Properly designed spacing is essential to ensure that each panel receives sufficient solar radiation.



The installation distance of the rear row of photovoltaic panels on the



Use Google Drive for desktop

Looking for more advanced controls? Dive into topics like customizing settings, using offline access, and managing photos photos backups in our advanced Drive for

Shade Calculator

Knowing the minimum angle of incidence of sunlight during the year, it is possible to determine the distance between successive rows of photovoltaic panels. The figure below shows the schematic ...

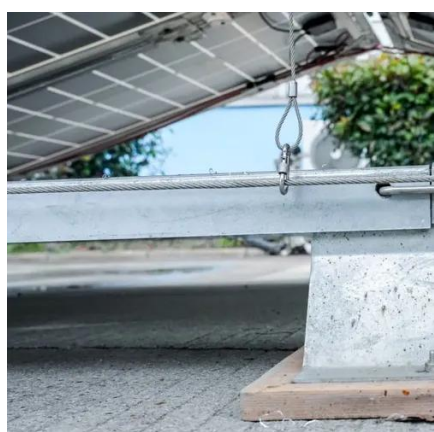


Install & uninstall Google Earth Pro

Fix installation errors Before attempting any of the instructions below: Verify that your operating system is supported. If you're using Google Earth Pro, verify that you have administrative rights on your ...

[Optimal Spacing Guidelines for Solar Roof Mounts](#)

This spacing has a significant impact on the structural integrity of the system and maximizes its energy generation potential. In this article, we will dig into the recommended spacing ...



[How to Calculate the Minimum Distance Between PV Panels?](#)

Understand the importance of minimum installation distance for solar panels, calculation methods, and relevant regulations to ensure efficient operation and compliance of solar energy ...

Find the Google Play Store app

On your device, go to the Apps section. Tap Google Play Store . The app will open and you can search and browse for content to download.



Fix issues when you install Chrome

Download the installation file again. To install Chrome again, use the new file. If the installation still isn't working, use an offline installer. Computers with multiple user accounts. Computers with one user ...

[Photovoltaic Array Row Spacing Calculator](#)



The row spacing of a photovoltaic array is the distance between the front and rear rows of solar panels. This spacing is calculated to ensure that the rear panels are not shaded by the front panels, ...



[The distance between the front and rear rows of photovoltaic panels](#)

To calculate the distance between the front and rear of solar photovoltaic panels, you'll need to consider several factors, including the dimensions of the panels, the tilt angle of the panels, ...



[1. Télécharger le programme d'installation](#)

Prise en main rapide du navigateur Chrome (Mac)
1. Télécharger le programme d'installation
Suivant: 2. Définir des règles



[Calculate distance between rows of photovoltaic panels](#)

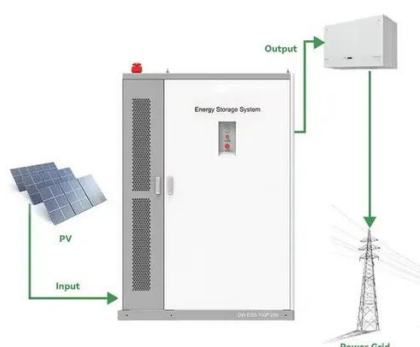
How to calculate the distance between rows of photovoltaic panels to prevent shadows?



Télécharger et installer Google Chrome



Installer Chrome Important : Avant de télécharger Chrome, vérifiez s'il est compatible avec votre système d'exploitation et assurez-vous de disposer de la configuration système requise.



Install and manage extensions

For additional protection when you install a new extension from the Chrome Web Store, you can use Safe Browsing's Enhanced protection. If you enable Enhanced protection in Chrome, it warns you ...

[Determining Module Inter-Row Spacing: Updated Guidelines for the ...](#)

In our original "Determining Module Inter-Row Spacing" article, we examined how optimal inter-row spacing in photovoltaic (PV) systems is critical for maximizing energy production, ensuring ...



[Optimal Solar Panel Row Spacing Calculator, SolarMathLab](#)

Using this calculator, you can determine the ideal distance between rows based on your location, panel tilt, height, and seasonal sun position, ensuring your solar array performs at its best all year round.



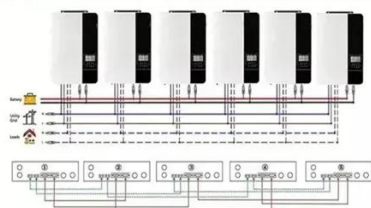
Google Chrome Help



Official Google Chrome Help Center where you can find tips and tutorials on using Google Chrome and other answers to frequently asked questions.

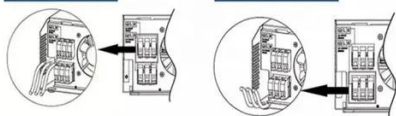


Parallel (Parallel operation up to 6 unit (only with battery connected))



AC input wires

AC output wires

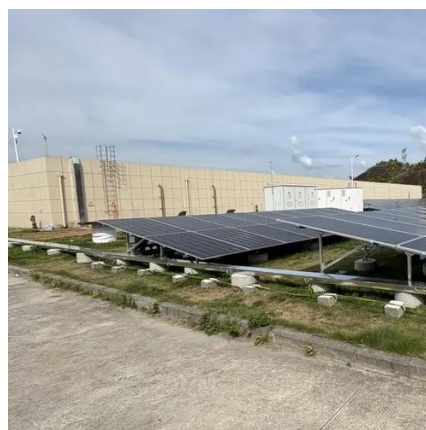


[How to Calculate Solar Panel Row Spacing for Maximum Efficiency](#)

To take the guesswork out, we've built a Solar Panel Row Spacing Calculator. Enter your site's latitude, tilt, and azimuth, and it will calculate the minimum spacing needed to avoid shading at ...

Download and install Google Chrome

How to install Chrome Important: Before you download, check if Chrome supports your operating system and you've met all other system requirements.



[How to Calculate the Distance Between the Front and Rear of Solar](#)

To calculate the distance between the front and rear of solar photovoltaic panels, you'll need to consider several factors, including the dimensions of the panels, the tilt angle of the panels, ...



[Résoudre les problèmes lors de l'installation de Chrome](#)



Si l'installation pose toujours problème, utilisez un programme d'installation hors connexion :
Ordinateurs avec plusieurs comptes utilisateur
Ordinateurs avec un seul compte utilisateur Pour
...





Contact Us

For catalog requests, pricing, or partnerships, please visit:

<https://www.iwap.com.pl>

Phone: +34 919 456 782

Email: info@iwap.com.pl

Scan the QR code to access our WhatsApp.

