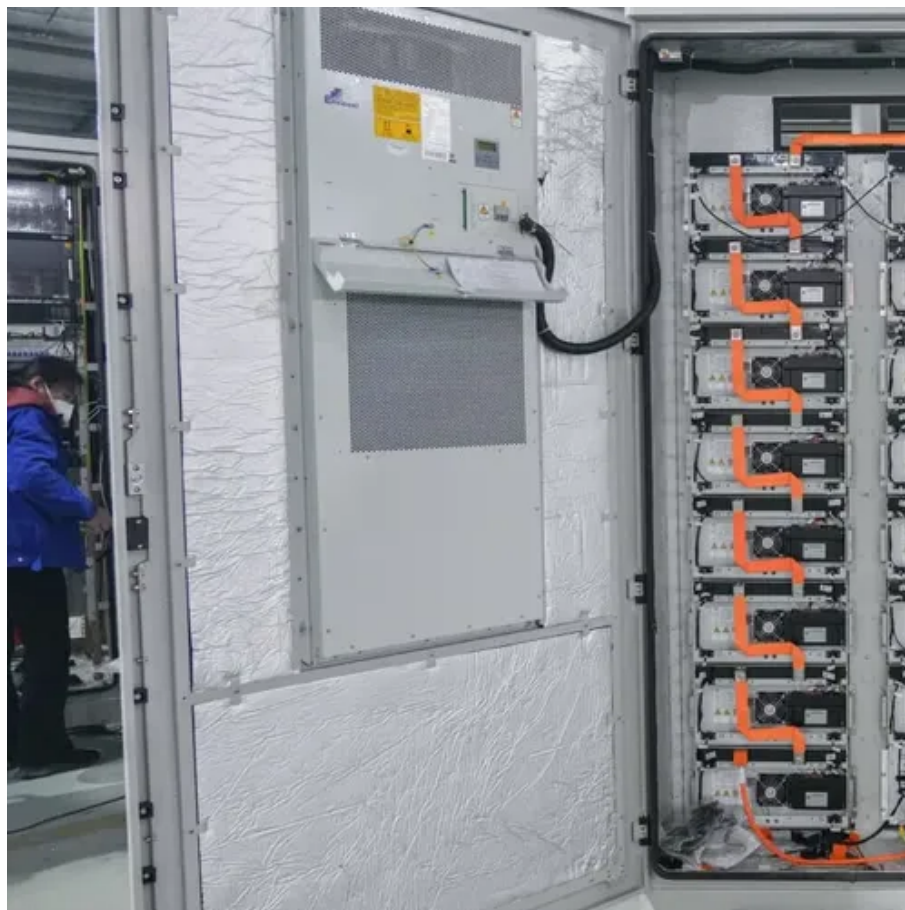




The inverter should use sine wave





The inverter should use sine wave



Using Tips For Pure Sine Wave Inverter

Efficient use of the inverter also involves minimizing standby power consumption and turning off the inverter when not in use. A pure sine wave inverter is an excellent investment for ...

[How to Select the Ideal Pure Sine Wave Inverter for Your Project](#)

The best pure sine wave inverter provides clean power, reducing wear on sensitive electronics. Consider factors like power requirements, efficiency, and device compatibility when ...



[Sine Wave Inverters . How it works, Application](#)

Explore the world of sine wave inverters: their functionality, benefits, applications, key features, and tips on selecting the right model.

[How Does a Pure Sine Wave Inverter Work? A Comprehensive ...](#)

A pure sine wave AC signal oscillates smoothly in a symmetrical, curved pattern, with voltage rising from 0 to a positive peak, falling back to 0, dropping to a negative peak, and returning ...

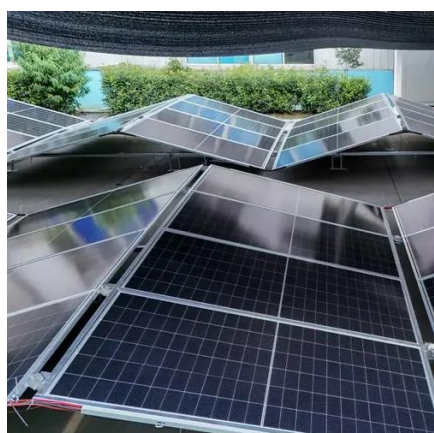


[The Ultimate Guide to Pure Sine Wave Solar ...](#)

This guide will explain the characteristics of pure sine wave solar inverters and their significance in power conversion.

[Pure Sine Wave Inverters: Necessary or Overkill?](#)

A modified sine wave inverter will work for most situations, but there are some cases where it might cause damage or be less efficient. Devices that use AC motors, like refrigerators, ...



How Does A Pure Sine Wave Inverter Work?

Inverters are a critical part of any solar power system. We delve into inverter technology, in particular pure sine wave inverters, and learn why they are so important.

[Reliable Pure Sine Wave Inverter Selection](#)



Learn how to choose, install, and use pure sine wave inverters to protect your electronics and keep everything running during blackouts and off-grid adventures.

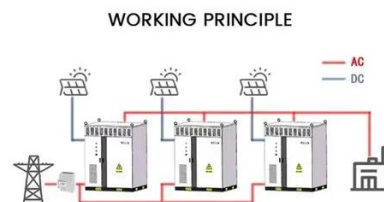


[What Is Pure Sine Wave Inverter And Why Do We Need It?](#)

What Is a Pure Sine Wave Inverter? A pure sine wave inverter (PSW) transforms direct current (from batteries, solar panels, or car batteries) into alternating current with a smooth, ...

[Comparison of Pure Sine Wave and Modified Sine Wave Inverters...](#)

This article walks through the real differences, highlights which devices actually need pure sine wave, and explains how buyers--from industrial users to wholesale distributors--should think ...





Contact Us

For catalog requests, pricing, or partnerships, please visit:

<https://www.iwap.com.pl>

Phone: +34 919 456 782

Email: info@iwap.com.pl

Scan the QR code to access our WhatsApp.

