



The output of the lithium battery pack is DC



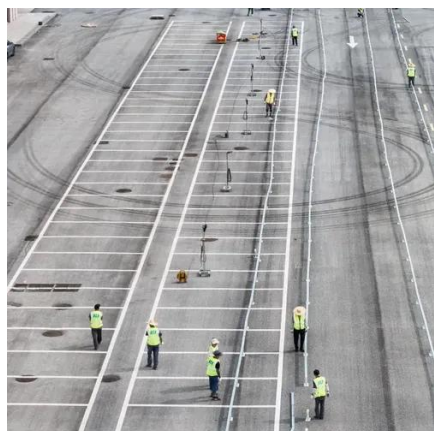


Overview

The clear answer is this: lithium batteries supply DC (Direct Current). Understanding this concept can help you make smarter choices about devices, power systems, and even safety. Voltage range of the 12V output port is 12. 12v DC port: Inner Positive (+), Outer Negative (-). This article dives deep into the topic—combining practical applications, real-world. Please turn on the battery switch to position "I" when you're charging. No matter whether we are talking about a lithium-ion battery, a car battery, a small 9V battery, or a common AA cell, the answer is the. The choice of AC or DC affects the design and efficiency of battery packs. It can also act as a variable voltage UPS power supply. 4V, 9V, 10V, 11V, 12V, 13V, 14V, 15V, 16V, 18V, or 19V.



The output of the lithium battery pack is DC



[Adjustable voltage portable lithium ion battery pack Battery Power](#)

This portable rechargeable battery pack consists of a 60 watt hour lithium ion battery assembly and two DC/DC converters. The first DC converter allows the pack to be charged with a ...

[USING DC POWER SUPPLIES & CHARGERS WITH LITHIUM ...](#)

Most Li-ion batteries perform at their best with a constant float voltage from the DC power supply. For example, a 48 volt Li-ion power plant may have an optimal float voltage of 54.0 volts DC. You can ...



Amazon : Dc Battery Pack

Talentcell 12V Rechargeable Lithium ion Battery Pack with Charger, 2600mAh Batteries with DC 12V Output for DIY Project, Radio, Fishing Light, RC Car, LED Light Strip, CCTV Camera, Router and More



[Battery Current Characteristics: AC or DC, Flow Direction and ...](#)

No matter whether we are talking about a lithium-ion battery, a car battery, a small 9V battery, or a common AA cell, the answer is the same--all real batteries output direct current (DC).

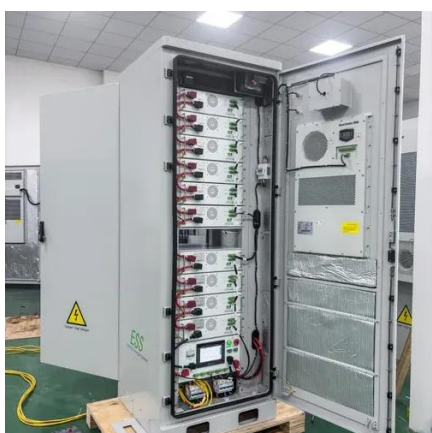


[Battery Packs: AC vs. DC Explained - Ultimate Guide to Power ...](#)

While some battery packs can convert their output to Alternating Current (AC) for specific applications, the fundamental design is DC-centric. DC and AC power have distinct characteristics.

[YB1206000 , 12V Lithium ion battery , 12V Lithium ion battery](#)

TalentCell rechargeable 12V lithium-ion battery pack is designed specifically to integrate with Light bars, Flexible LED Lights, or most 12V DC electronic devices.



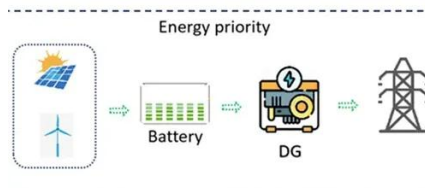
Are Lithium Batteries AC or DC?

With AC powering our homes and DC charging our phones and laptops, it's natural to wonder: what kind of electricity does a lithium battery provide? The clear answer is this: lithium ...

[12 Volt Lithium Ion Battery Explained: Complete Guide](#)



A 12 volt DC lithium ion battery is a type of rechargeable battery that provides a consistent 12V output using lithium-ion cells. These batteries are known for their long lifespan, lightweight ...



[Talentcell Rechargeable 12V 6000mAh/5V 12000mAh DC Output Lithium ...](#)

Rechargeable DC 12V and 5V USB double output lithium ion battery pack. Voltage range of the 12V output port is 12.6-9V, it is not constant, compatible with most 12 volt devices. 12v DC port: Inner ...



Contact Us

For catalog requests, pricing, or partnerships, please visit:

<https://www.iwap.com.pl>

Phone: +34 919 456 782

Email: info@iwap.com.pl

Scan the QR code to access our WhatsApp.

