



The solar panels are frozen





Overview

Yes, solar panels work in winter and snow. The average solar panel installation costs over \$25,000, making it perfectly reasonable to worry that your investment could require extra maintenance or simply break during harsh winter months. But the reality may surprise you. It turns out solar panels typically operate more efficiently in cooler. While solar photovoltaic (PV) installations are best able to reliably take advantage of the sun's energy in climates such as the Southwestern United States (Figure 1), PV systems are also beneficial in parts of the United States with severe winter weather. **Ensure Safety:** Prioritize personal safety by avoiding contact with electrical components. **Use Warm Water:** Gradually apply warm water to melt ice. Solar panels have become an increasingly popular way to generate energy. However, as with any outdoor equipment, there are certain environmental factors that can affect their performance and longevity.



The solar panels are frozen



[Harsh winter photovoltaic lands on America -- "Frozen" solar panels](#)

This panel holds up to 22% of its energy when the temperatures dip and snow piles up. Experts say this panel also works well with micro-inverters and optimizers, which are effective for ...

[How to Keep Snow Off Solar Panels? Don't Let Winter ...](#)

Discover the impact of snow on solar panels. Learn how to remove snow from solar panels and keep them producing power all winter long.



[How to Keep Snow Off Solar Panels: 9 Effective Ways To Do It](#)

Cleaning snow off of solar panels is an important part of ensuring that your system is able to continue operating effectively. In this article, we explore the importance of removing snow from ...



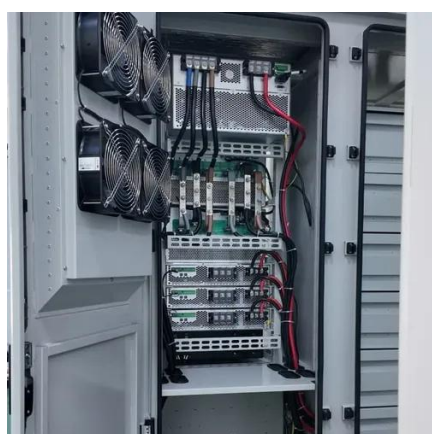
[EG4 Solar Community , Snow is frozen to the panels.. , Facebook](#)

Snow is frozen to the panels I think next time I'm gonna use the leaf blower method in the middle of the snow and after Removing snow from solar panels using leaf blower method and other techniques



Solar Photovoltaic Hardening for Resilience

PV modules operate more efficiently in colder weather, as temperatures above 77°F cause decreases in voltage. However, the threat of winter weather, like ice and snow, pose design and operational ...



How Snow Buildup Affects Solar Panels and Ways to Prevent Damage

One of the most common concerns, especially in regions that experience harsh winters, is the potential for snow on solar panels. In this guide, we'll explore the potential risks and steps you ...



Do solar panels work in snow and during winter?

Solar panels run on sunshine--it's right there in the name. But that doesn't mean they need day after day of warm, sunny weather to operate. In fact, solar panels can generate electricity ...



How to thaw the solar panel upstairs if it is frozen? .NenPower



One of the most effective yet simple methods to thaw frozen solar panels is through the application of warm water. This technique requires a careful approach to avoid potential harm to the ...



[Do Solar Panels Work In Winter Snow? Complete 2025 Guide](#)

Solar panels work effectively in winter snow with only 1-5% production loss. Learn why cold weather improves efficiency, safety tips for snow removal, and real performance data.

[Are Solar Panels Impacted By The Cold? Here's What To Know](#)

Although solar panels won't be impacted negatively by cold temperatures, northern regions with shorter days and lower sun angles can reduce energy production.





Contact Us

For catalog requests, pricing, or partnerships, please visit:

<https://www.iwap.com.pl>

Phone: +34 919 456 782

Email: info@iwap.com.pl

Scan the QR code to access our WhatsApp.

