



The voltage of lithium battery in energy storage station is 1000v





The voltage of lithium battery in energy storage station is 1000v



[Battery storage power station - a comprehensive guide](#)

This article provides a comprehensive guide on battery storage power station (also known as energy storage power stations). These facilities play a crucial role in modern power grids by storing electrical energy for later ...

[The voltage of lithium battery in energy storage station is 1000v](#)

The voltage of energy storage batteries can differ dramatically based on specific configurations and technologies. Typical operating voltages for modern energy storage systems often fall between 400 and 800 volts.



[Battery Integrated EV Charger, Energy Storage EV Charging ...](#)

SCU EVMS ONE Series is an innovative EV charging solution that integrates a lithium battery-based energy storage system (ESS) to support and enhance charging performance.



[Lithium Ion Battery Voltage Explained: Everything You Need to Know](#)

Lithium-ion batteries are quite popular for energy storage in solar energy systems, which include off grid solar system and hybrid solar system. A 12V 100Ah fully charged lithium ion battery reaches an ...



[How much voltage does the energy storage station have?](#)

The voltage range for energy storage systems typically spans from 400V to 1000V. The specific voltage utilized depends primarily on the system design, application, and integration requirements with the ...



[A comparative study of the LiFePO4 battery voltage models under grid](#)

Using the hysteresis model, we analyze the hysteresis open-circuit voltage (OCV) variations of LFP batteries in three energy storage scenarios.



[How many volts can a battery in an energy storage station reach?](#)

1. Energy storage stations can utilize batteries with voltages typically ranging from 12 volts to over 1,000 volts, depending on the technology and application,...



[Technical Parameters and Management of Lithium Batteries in Energy](#)



Learn about the key technical parameters of lithium batteries, including capacity, voltage, discharge rate, and safety, to optimize performance and enhance the reliability of energy storage systems.

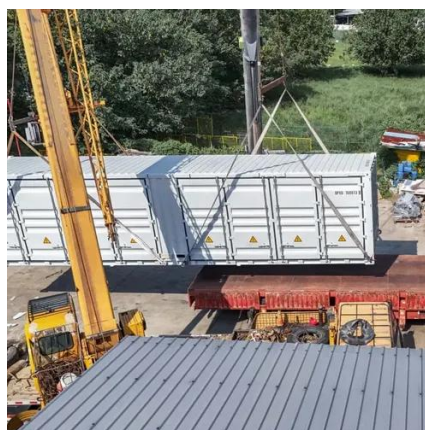


[Grid-Scale Battery Storage: Frequently Asked Questions](#)

A battery energy storage system (BESS) is an electrochemical device that charges (or collects energy) from the grid or a power plant and then discharges that energy at a later time to provide electricity or other grid ...

[Lithium-Ion Battery Voltage Breakdown: 12V, 24V, 48V Explained](#)

A 48V lithium-ion battery is commonly used in high-power applications such as solar energy storage and electric vehicles. Maintaining the correct voltage levels ensures optimal performance and ...





Contact Us

For catalog requests, pricing, or partnerships, please visit:

<https://www.iwap.com.pl>

Phone: +34 919 456 782

Email: info@iwap.com.pl

Scan the QR code to access our WhatsApp.

