



The weight of a 300kW wind turbine generator





Overview

The KWT300 is a rare mid-sized system, which generates 300kW. The entire system can be transported by a 10-ton truck, and the system can be installed in a narrow space, using a small 60-ton crane. This manufacturer has been in business since 2017. The rated power of Windkraft Zürcher 300 kW is 300,00 kW. the cut-out wind speed. The KWT300, a medium-sized wind turbine manufactured in Japan, is adapted to harsh weather conditions, such as remote islands and mountainous regions, where large turbines may not be suitable, serving as a community-type wind turbine to provide renewable energy to local regions. The normal climate. rtic conditions. The complete turbine assembly is shipped quickly in standardized cargo containers anywhere in the world and can be er y on the ground. Additionally, the guyed tower requires substantially less excavation and concrete for. The KWT300 is designed to be highly resistant to gusts, lightning, and earthquakes. It is best used for remote communities with power generation by diesel fuel, which is expensive and is the largest source of CO2 emission in those.



The weight of a 300kW wind turbine generator



[Medium-Sized Wind Turbine KWT300 , Products , Wind Power](#)

Being in a compact-scale of a 300kW output range, the wind turbine does not require big-capacity transmission lines or large-scale batteries. By controlling the output of a wind turbine or combining it ...

Komaihaltec KWT300

There are no power data deposited for this turbine. There are no models to this Windturbine. The wind turbine KWT300 is a production of KOMAIHALTEC Inc., a manufacturer from Japan. This ...



✓ TELECOM CABINET

✓ BRAND NEW ORIGINAL

✓ HIGH-EFFICIENCY

Enercon E-33 / 300

We have power data on the E-33 / 300 from the Enercon in the system. You can see the powercurve in the diagram above. The Enercon E-33 / 300 has been listed since 09.01.2013. The last modification ...

CWE Model 300-30

The Carter wind turbine proprietary technology is most significant in that it produces 4 times the energy per pound of equipment weight versus the current state of the art three blade wind ...

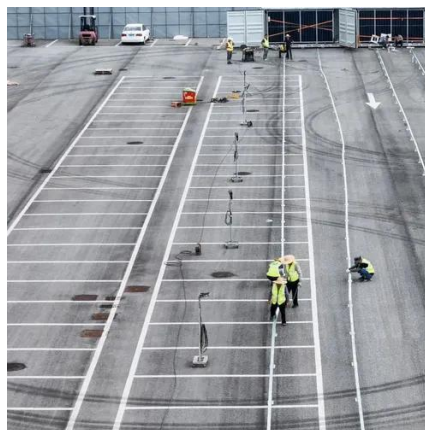


Manufacturers and turbines

Model: WM30/300 Rated power: 300 kW Rotor diameter: 30 m No more available Wind class: IEC III Offshore model: no Swept area: 707 m² Specific area: 2.36 m²/kW Number of blades: 3 ...

Mitsubishi MWT-300S

There are no models to this Windturbine. The wind turbine MWT-300S is a production of Mitsubishi Heavy Industries, LTD., a manufacturer from Japan. The rated power of Mitsubishi MWT-300S is ...



[Wind energy: Mid-Size Wind Turbine "KWT300" \(300kW\)](#)

Major wind turbine companies today are mainly manufacturing larger systems (i.e. 2,000kW and 3,000kW) and not mid-sized systems (100kW to 600kW). The KWT300 is a rare mid-sized system, ...



Nordtank NTK 300



There are no power data deposited for this turbine. The wind turbine NTK 300 is a production of Nordtank Energy Group, a manufacturer from Denmark. Nordtank Energy Group is no longer active. ...



Windkraft Zürcher 300 kW

In the generator, Windkraft System Zürcher AG sets to synchronous permanent. The manufacturer has used one generator for the 300 kW. The maximum speed of the generator is 6 U/min. The voltage ...



Contact Us

For catalog requests, pricing, or partnerships, please visit:

<https://www.iwap.com.pl>

Phone: +34 919 456 782

Email: info@iwap.com.pl

Scan the QR code to access our WhatsApp.

