



# Three-phase EPC general contracting for server racks used at border outposts





## Overview

---

This testimony discusses (1) USACE's contract obligations and awards in fiscal years 2018 through 2020 to support barrier construction on the southwest border, (2) the factors that drove USACE's acquisition approach, and (3) the status of barrier completion as of January 2021. This testimony discusses (1) USACE's contract obligations and awards in fiscal years 2018 through 2020 to support barrier construction on the southwest border, (2) the factors that drove USACE's acquisition approach, and (3) the status of barrier completion as of January 2021. A logical Outpost deployment consists of one or more Outposts compute racks connected to an Outposts network rack. Inside the Outposts racks, we have hosts, switches, network patch panels, power shelves, and blank panels. In case of conflict among Contract Documents, Contractor may be required to bring conflict. CONTRACTOR & SUBCONTRACTOR RELATION actors are independent contractors. Owner may be generally prohibited from communicating. CBP'sThe Department of Homeland Security's Customs and Border Protection plans to issue a firm-fixed-price, indefinite-delivery/indefinite-quantity contract valued at up to \$100 million for design and construction services at multiple sites across California, Texas, Michigan, New York and. That's why many project owners turn to EPC (Engineering, Procurement, and Construction) delivery—a contract model that hands over full responsibility to a single contractor. This approach ensures a structured process, clear accountability, and a faster path from concept to completion. EPC is just. A January 2017 Executive Order directed the Secretary of Homeland Security to immediately plan, design, and construct a wall or other physical barriers along the southwest border.



## Three-phase EPC general contracting for server racks used at border



### A Guide to EPC Agreement Provisions

ut by provisions lurking elsewhere. This Guide is a compilation and summary of legal terms and conditions often found in a fixed-price EPC agreement for a large private industrial work of ...

### [What Does EPC Mean in Construction? All About EPC Contracts](#)

EPC is a type of construction contract and project delivery method with one contractor managing a complex project throughout its lifecycle. Learn the details.



### [GAO-23-106893, SOUTHWEST BORDER: Award and ...](#)

My statement today focuses on the contracting and procurement process for border barrier construction.

### Border Infrastructure

The contract demonstrates DHS CBP's strategy of using flexible, multiple-award contract vehicles to rapidly execute border security and infrastructure projects across diverse geographic ...



### **CBP to Award \$100M Construction Contract**

Work on the contract will include the provision of tools, supplies, equipment and labor required in facility construction, renovation and upgrades, repair, and maintenance.



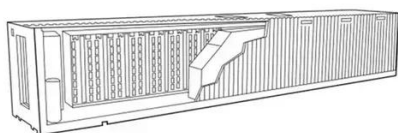
### [Design and build Permanent Joint Processing Center \(JPC\)](#)

This design-build construction task order is being solicited under the Department of Homeland Security (DHS) Customs and Border Protection (CBP) Southwest Border Infrastructure ...



### **How EPC Project Delivery Works**

Learn how EPC project delivery works, from engineering to construction, and see how it helps project owners manage costs, risks, and timelines effectively.



### [AWS Outposts racks Hardware Specs - Amazon Web Services](#)



A logical Outpost deployment consists of one or more Outposts compute racks connected to an Outposts network rack. Inside the Outposts racks, we have hosts, switches, network patch panels, ...

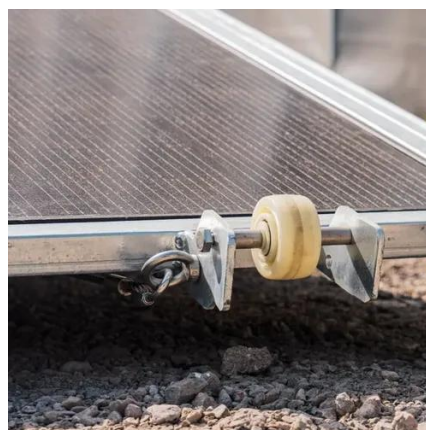


### [Border Infrastructure Program Construction Phase Services for South](#)

Specifically, the contract aims to procure these services during the building of border barriers and associated structures in support of the Border Infrastructure Program across Arizona, ...

### [MATOC \(\\$180M\) Construction Phase Services \(CPS\) the US. Army ...](#)

The Construction Phase Services (CPS) will support various construction activities along the southern border of the United States by providing quality assurance (QA) services during the building of the ...





## Contact Us

---

For catalog requests, pricing, or partnerships, please visit:

<https://www.iwap.com.pl>

Phone: +34 919 456 782

Email: [info@iwap.com.pl](mailto:info@iwap.com.pl)

Scan the QR code to access our WhatsApp.

