



Variable frequency constant frequency wind power generation system





Variable frequency constant frequency wind power generation system

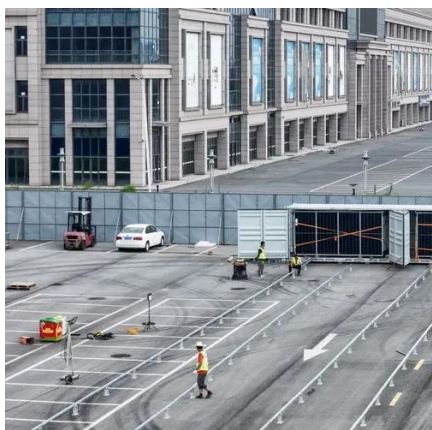


[Variable-Speed Wind Energy Conversion System](#)

Variable Speed Wind Energy Conversion Systems (VSWECS) refer to wind energy systems that can adapt rotor speed to varying wind speeds, thereby increasing efficiency and enabling compliance ...

[How can I update the system PATH variable permanently from cmd?](#)

A PATH definition referencing %PATH% is complete nonsense. The folder paths of former defined user environment variable PATH are deleted irrevocable by this command line. For more details about a ...



["cannot access local variable 'a' where it is not associated with a](#)

To access a global variable within a function you must specify it with global. Otherwise, the variable inside the function is a local variable that only has utility inside that function.

Generation Schemes for Wind Power Plants

This paper reviews various electric generation schemes for wind energy conversion suitable for interconnection with a power grid. The schemes can be generally classified as constant speed ...



[An Optimal Fast Frequency Control Method for Variable Speed Wind](#)

This research presents a proposal to enhance the system frequency by utilizing WFs and restoring the speed of the wind turbine (WT) rotor using the doubly fed induction generator (DFIG) ...



[a Variable Speed, Constant Frequency Generating System](#)

The circuit development up to this point can be summarized as follows: The slip frequency circuit and the field-oriented circuit generates a three phase system of control voltages whose frequency is equal ...



Difference between ++variable and variable++

Difference between ++variable and variable++
 Asked 12 years ago Modified 9 years ago Viewed 6k times

What does \$_ mean in PowerShell?



4 \$_ is a variable created by the system usually inside block expressions that are referenced by cmdlets that are used with pipe such as Where-Object and ForEach-Object. But it can be used also in other ...



[Generator With Variable Speed and Constant Frequency Operation](#)

This article explores the technology behind variable speed constant frequency (VSCF) generators, their working principles, advantages, applications, and key components.

python

I know that some other languages, such as PHP, support a concept of 'variable variable names' - that is, the contents of a string can be used as part of a variable name. I heard that this



[What is the purpose of the dollar sign in JavaScript?](#)

A '\$' in a variable means nothing special to the interpreter, much like an underscore. From what I've seen, many people using jQuery (which is what your example code looks like to me) ...

[Scripting a post response in Bruno as an environment variable](#)



The toString() method converts the raw response data into a string format, while the trim() method removes any leading or trailing whitespace from the string. These changes ensure the ...

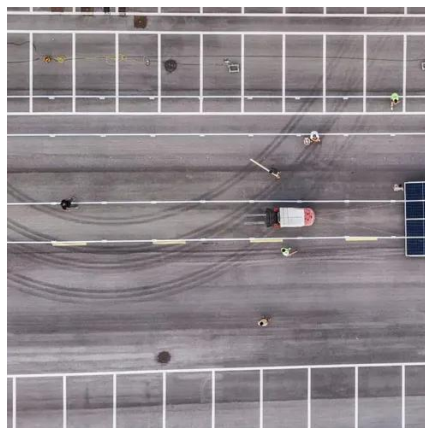


[Adding a directory to the PATH environment variable in Windows](#)

I am trying to add C:xamppphp to my system PATH environment variable in Windows. I have already added it using the Environment Variables dialog box. But when I type into my console: ...

[Variable Speed Constant Frequency Generator:](#)

Variable Speed Constant Frequency Generator (VSCF) involves generation of electrical power at fixed frequency and fixed voltage from a variable speed prime mover coupled to the generator shaft. Wind ...



[What does the @ symbol before a variable name mean in C#?](#)

I understand that the @ symbol can be used before a string literal to change how the compiler parses the string. But what does it mean when a variable name is prefixed with the @ symbol?

[Design of Automatic Control System for VSCF Wind Power ...](#)



According to the introduction of relevant literature, first of all, it describes the advantages of VSCF wind power technology, and discusses the important role of VSCF system in promoting wind power gener ...



[Modeling and Control of Variable Speed Wind Turbine ...](#)

Abstract--Wind turbine generators (WTG) can participate in system frequency regulation via virtual inertial controllers (VIC). In the presence of frequency disturbances, VIC temporarily reg-ulates the ...

[Impact Analysis of Increased Penetration of Variable Speed Constant](#)

The simulation analysis of the fault disturbance process of the power grid system with variable speed and constant frequency wind turbines, the results verify the correctness of the modeling.



[MySQL: @variable vs. variable. What's the difference?](#)

Function variable for which the scope ends when function exits. Package body variables defined at the top of package and outside all functions whose scope is the session and visibility is package.

[Variable-speed Constant-frequency \(VSCF\) Wind Power ...](#)



Based on the production function research, this paper analyzes the key technologies of VSCF WPG.





Contact Us

For catalog requests, pricing, or partnerships, please visit:

<https://www.iwap.com.pl>

Phone: +34 919 456 782

Email: info@iwap.com.pl

Scan the QR code to access our WhatsApp.

