



Voltage is low after photovoltaic panels are connected in series





Overview

Quick Answer: Yes, connecting photovoltaic (PV) panels in series increases the system's total voltage while maintaining the same current. I have a Victron Smart Solar MPPT 250 / 100 charge controller that is connected to a 48 volt battery bank with eight Renogy lead acid batteries. It is important to understand these two configurations as we have to estimate our home needs or power storage for. When setting up your solar power system, one of the most crucial choices is how to connect your solar panels: in series or parallel. This impacts your system's voltage, current, efficiency, and compatibility with your inverter or charge controller. Most silicon solar cells produce.



Voltage is low after photovoltaic panels are connected in series



[Series Connected Solar Panels For Increased Voltage](#)

When the panels are connected together in series, the voltages still add the same as before so the string produces 36 volts DC at 5.0 amps, producing 180 watts. Again the output voltage ...

Pv Module Series And Parallel Connection

Connecting them in series or parallel alters the overall voltage and current output of the array. Series Connection: Increases the voltage while maintaining the same current. This is ...



[What is a Series or Parallel Connection in Solar Panels?](#)

- A hybrid inverter requires you to wire solar panels in series to reach its minimum DC voltage. In larger systems, you can also connect multiple series strings in parallel to deliver higher ...



[Does Connecting Photovoltaic Panels in Series Increase Voltage? A](#)

Quick Answer: Yes, connecting photovoltaic (PV) panels in series increases the system's total voltage while maintaining the same current. This configuration is essential for optimizing solar energy ...

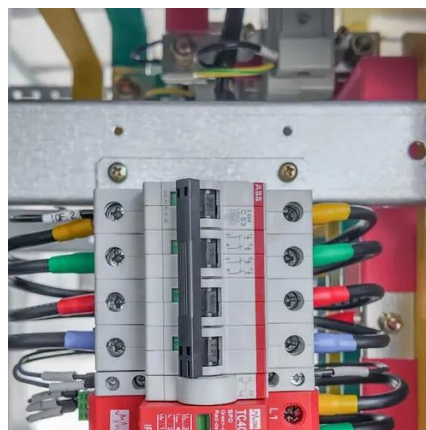


[How To Wire Solar Panels In Series: Complete Guide 2025](#)

Wiring solar panels in series means connecting the positive terminal of one panel to the negative terminal of the next panel, creating a chain that increases total voltage while maintaining the ...

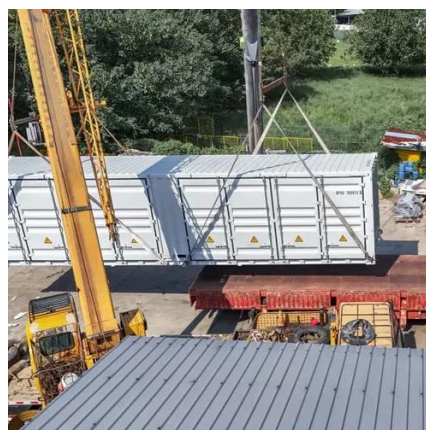


[How To Safely Connect Solar Panels In Series Or Parallel](#)



[Solar Panel Voltage Drops to Zero when Connected to Controller](#)

There are eight solar panels connected in series that give me about 138 volts on average on a sunny day. The problem that I am having is when I connect my solar panels to the charge ...



[Connecting Solar Panels in Series Vs Parallel](#)

Connecting PV panels in series increases the voltage but amps remain the same, but in parallel connection, current and power output increase. For connecting panels in either series or ...



Learn how to connect solar panels in series or parallel, including wiring diagrams, voltage differences, and expert DIY tips. Master your solar setup today!



[Solar Panel Wiring Basics: Wiring PV Panel In Series And Parallel](#)

When panels are wired in series, their voltages add up, while the current remains the same as that of a single panel. For example, if you have three panels each producing 40 volts at 10 ...

[The voltage is very low after the photovoltaic panels are ...](#)

Low solar panel voltage can stem from various factors, including shading, dirt or debris accumulation, faulty connections, or even panel degradation over time. The good news is that identifying and ...





Contact Us

For catalog requests, pricing, or partnerships, please visit:

<https://www.iwap.com.pl>

Phone: +34 919 456 782

Email: info@iwap.com.pl

Scan the QR code to access our WhatsApp.

