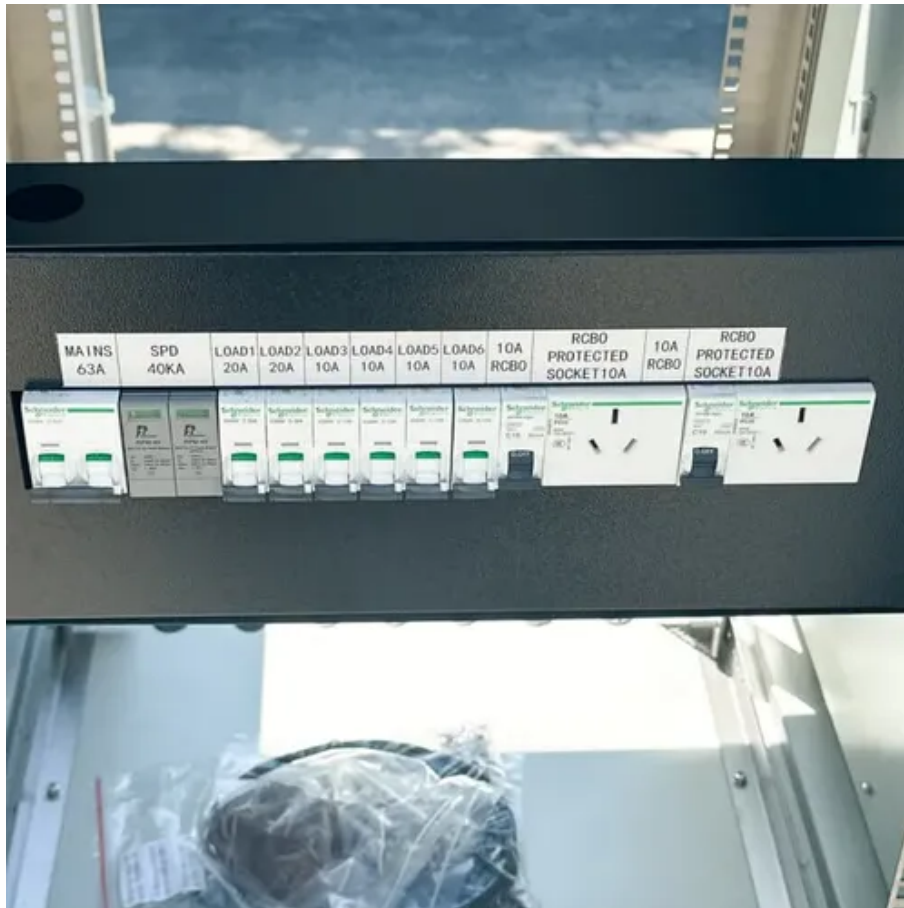




Wattage rating of solar integrated machine





Overview

The continuous power rating, also referred to as the rated power, represents the maximum power in watts (W) that an inverter can consistently deliver over a sustained period. [2, 3] This is the most important specification for sizing, as it must be greater than or equal to. The wattage of solar energy storage and control integrated machines varies significantly based on several factors, including design, capacity, and intended application. Typically, these systems can range from as low as 500 watts for residential applications to several thousand watts for larger. Powerwall 3 is a fully integrated solar and battery system, designed to accelerate the transition to sustainable energy. Customers can receive whole home backup, cost savings, and energy independence by producing and consuming their own energy while participating in grid services. Solar panel wattage ratings usually indicate the maximum energy produced when exposed to direct sunlight at 1000W/square meters. The basic solar panel. We have provided a chart that lists typical power consumption demands of common devices which you can use as a guide.



Wattage rating of solar integrated machine



[What is the Wattage of Solar Panels? Myths and Facts Explained](#)

To determine how many solar panels you need, calculate your average monthly energy consumption in kilowatt-hours (kWh) and divide that by the average sunlight hours in your area, then ...

[Solar Panel Wattage Calculation: How To Calculate In 2025?](#)

Solar panel wattage calculation represents the maximum electrical power a photovoltaic module can produce under Standard Test Conditions (STC). These standardized conditions include 1,000 watts ...



What size inverter do I need?

This report provides a detailed analysis of the critical factors governing the selection of inverter capacity for two primary applications: portable solar generators and residential rooftop solar ...

Solar Electric System Sizing Step 1

Once you have the wattage ratings, fill out the load sizing worksheet.

- o List all of the electrical appliances to be powered by the PV system.
- o Separate AC & DC devices and enter them in the appropriate ...



A Guide to solar panel ratings

To calculate a more realistic maximum power output rating for any given solar panel, first locate the Nominal Operating Cell Temperature (NOCT) and the Temperature Coefficient of Pmax on the solar ...



[Understanding Solar Panel Wattage, Output & Ratings](#)

Solar panel wattage is the total amount of power the solar panel can produce in a given time. It is usually measured in watts and calculated by multiplying the solar panel's voltage, ...



[How many watts does the solar energy storage and control integrated](#)

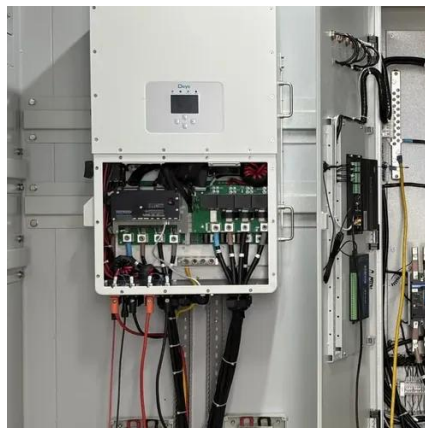
The wattage of solar energy storage and control integrated machines varies significantly based on several factors, including design, capacity, and intended application.



[Solar Panel Ratings Explained - Wattage, Current, Voltage, and](#)



The Wattage rating of a solar panel is the most fundamental rating, representing the maximum power output of the solar panel under ideal conditions. You'll often see it referred to as ...



[Inverter vs Solar Panel Wattage Compatibility](#)

When designing a solar power system, one of the most critical sizing checks is the relationship between the solar panel array wattage and the inverter's rated power. This relationship determines whether ...

Powerwall 3 Datasheet

Powerwall 3 is a fully integrated solar and battery system, designed to accelerate the transition to sustainable energy. Customers can receive whole home backup, cost savings, and energy ...





Contact Us

For catalog requests, pricing, or partnerships, please visit:

<https://www.iwap.com.pl>

Phone: +34 919 456 782

Email: info@iwap.com.pl

Scan the QR code to access our WhatsApp.

