



# Weight of 250w solar container outdoor power





## Overview

---

Learn about average weights (16-23 kg), installation challenges, and how new ultrathin designs are changing the game in 2024. You're probably wondering, "How heavy is a 250W photovoltaic panel exactly?"

" Well, here's the kicker - these solar workhorses typically weigh between 16-23 kg. Integrating solar panels into your life starts with understanding them and, more importantly, their specifications—like the weight of a 250-watt solar panel. This key information can significantly impact your installation process, mobility, and efficiency. Solar panels are remarkable technology. ☐Portable Solar Power Bank☐ This power station can be recharged by Sinkeu 60W mono crystalline solar panel with 22 high conversion efficiency. 5 feet and weighs around 19 kg. This size is great for many different homes and businesses. So, how big is a 250 watt solar panel?

A 250 watt solar panel is about 3. Bring your own container, a retrofit kit for outfitting with solar + WaterSecure.



## Weight of 250w solar container outdoor power



### [How Heavy Is a 250W Photovoltaic Panel? A Practical Guide](#)

Most 250W photovoltaic panels weigh between 18-20 kg (39.7-44 lbs), though this can vary slightly depending on the manufacturer and materials used. Let's break this down with real-world examples

### The Weight of a 250w Solar Panel

Understanding the weight and specifications of a 250-watt solar panel is an essential step toward making an informed decision about solar energy. The weight affects various aspects of your solar journey, ...



Deye inverters and Deye batteries are more compatible.

### Off-Grid Containers Spec Sheet

Our 20 and 40 foot shipping containers are outfitted with roof mounted solar power on the outside, and on the inside, a rugged inverter with power ready battery bank.



### 250 Solar panel weight

The standard size of a 250 Watt 60 cell solar panel be it monocrystalline or polycrystalline is 39 inch X 66 inch (3.25 ft X 5.5 ft) and the weight of a 250 watt 60 cell solar panel is around 19 kg..



### [How Big Is A 250 Watt Solar Panel? \[Updated: February 2026\]](#)

As the most common size, the 250 watt solar panel is a great option for many people looking to power their homes with solar energy. But it's important to keep in mind that the wattage of a solar panel only ...



### [250Wh Portable Power Station with 60W Solar Panel, Solar Generator](#)

It can easily power most of your devices with rated power less than 250W anytime and anywhere. With a weight of 5.1lb and soft handle, very portable size like a small handbag, easy to store and carry. Just ...



### [How Heavy Is a 250W Photovoltaic Panel? Weight Factors](#)

You're probably wondering, "How heavy is a 250W photovoltaic panel exactly?" Well, here's the kicker - these solar workhorses typically weigh between 16-23 kg (35-50 lbs).

[Complete guide to solar panel size and weigh](#)



Generally speaking, the weight of solar panels for domestic use is about 19kg to 30kg, and the weight of commercial solar panels is about 22kg to 35kg. However, some brands of 300W solar panels weigh ...



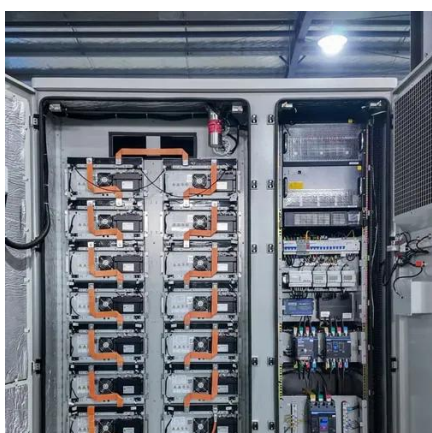
### [250Wh Portable Power Station with 60W Solar Panel, ...](#)

It can easily power most of your devices with rated power less ...



### [Solar Container Specifications , Mobile Solar Systems , Sunmaygo](#)

Get detailed specs and pricing for Sunmaygo's solar containers. Compare models, battery options, and calculate ROI. Find the best mobile solar power system for your needs.



### **Solar Panels Sizes and Weights (All Sizes)**

Deciding to power your building with solar energy can be quite complicated. Roofs can only withstand so much weight, and it is crucial to know how much your solar panel of choice will weigh.



## Contact Us

---

For catalog requests, pricing, or partnerships, please visit:

<https://www.iwap.com.pl>

Phone: +34 919 456 782

Email: [info@iwap.com.pl](mailto:info@iwap.com.pl)

Scan the QR code to access our WhatsApp.

