



# Weight of double-glass double-sided photovoltaic panels





## Weight of double-glass double-sided photovoltaic panels



### [Transparent backplane and double-glass solar panels: differences ...](#)

Solardeland will explain the differences between double-sided transparent backplane and double-sided double-glass modules in terms of weight, mechanical properties, reliability, UV ...

### [Double Glass Solar Panel Thickness Guide: Find Your Perfect Match](#)

Compare double glass solar panel thickness configurations for international projects. Includes custom small-format options under 200W for specialized global applications.



### **610W and 635W solar panels**

The 610W and 635W are N-type solar double-glass panels. They not only increase the power generation area of the components but also enhance the photoelectric conversion efficiency, making them an ...

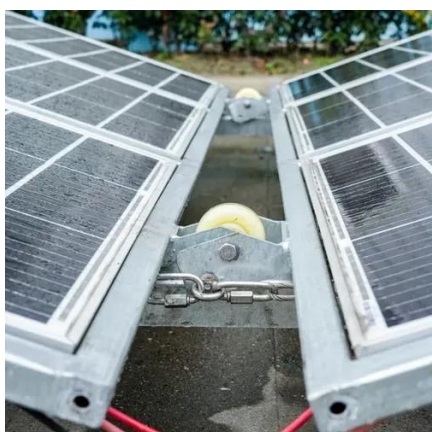
### **Double glass solar module , Maysun Solar**

Double glass modules use an innovative design with glass on both sides, offering higher photovoltaic conversion efficiency and better environmental characteristics.



### [Double Sided Glass Solar Panel Supplier And Manufacturer](#)

Double sided solar panels are a kind of photovoltaic panel with double-sided silicon crystal technology, both front and back sides are covered with glass, which has high light transmittance and anti ...



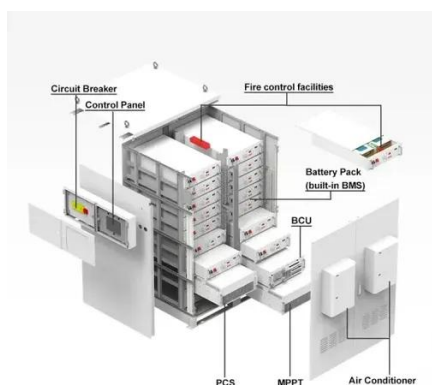
### [Double the strengths, double the benefits](#)

In the ever-evolving world of photovoltaic technology, double glass solar modules are emerging as a game-changer. By encapsulating solar cells between two layers of glass, these ...



### [Glass Weight of Solar Photovoltaic Panels: Why It Matters for ...](#)

When planning solar installations, most people focus on wattage or efficiency ratings. But here's something you might not have considered: glass weight significantly impacts everything from ...



### [Weight of single-sided and double-sided photovoltaic panels](#)



Also See: 3 Mono PERC Solar Panel Advantages and Disadvantages. What are Double Glass Solar Panel Advantages? Typically, solar panels have a front glass panel and a back plastic sheet. These ...



- LiFePO<sub>4</sub>
- Wide temp: -20°C to 55°C
- Easy to expand
- Floor mount&wall mount
- Intelligent BMS
- Cycle Life:≥6000
- Warranty :10 years



### [Weight of double-glass photovoltaic panels](#)

The double-glass panels measure 2,278 mm x 1,134 x 32 mm and weigh 32 kg. They feature 2.0 mm heat-strengthened glass, with anti-reflective coating. The modules have IP68 junction boxes and ...



## Contact Us

---

For catalog requests, pricing, or partnerships, please visit:

<https://www.iwap.com.pl>

Phone: +34 919 456 782

Email: [info@iwap.com.pl](mailto:info@iwap.com.pl)

Scan the QR code to access our WhatsApp.

