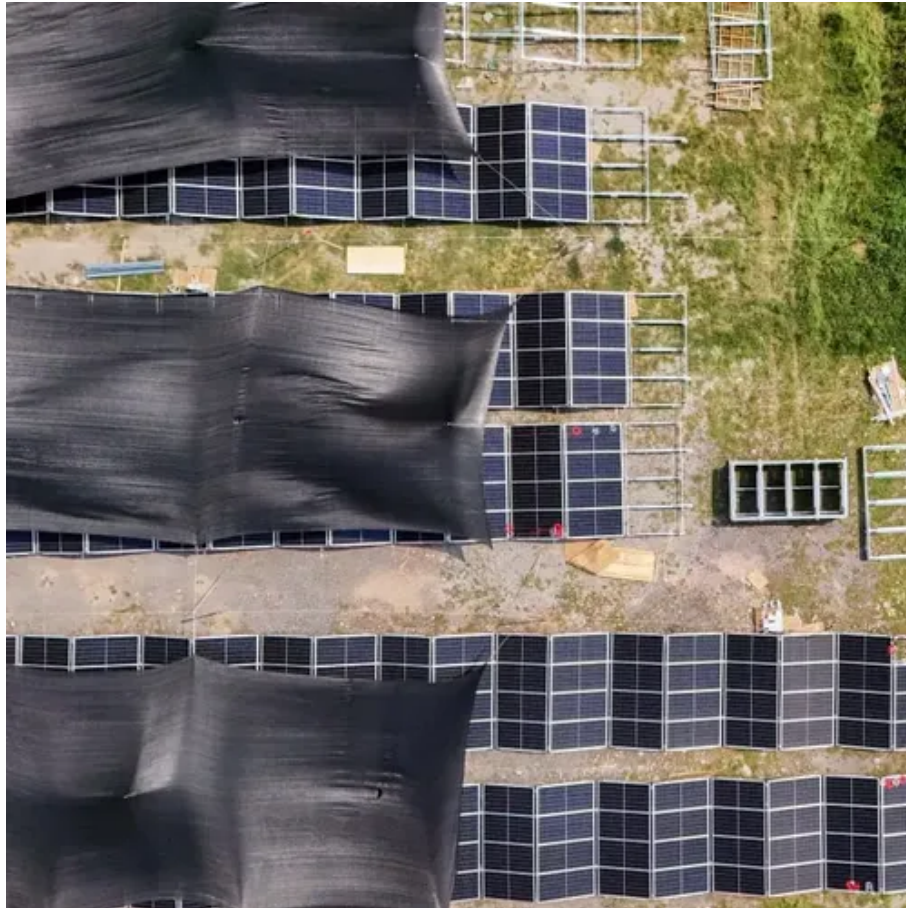




Wellington power outages





Wellington power outages



Power outages

Please note that there may be a short delay in displaying known unplanned outages. We only show outages affecting more than 10 properties. Streetlight outages: Lower Hutt , Wellington. Are you without power? ...

United States Power Outage Map

PowerOutage is an ongoing project created to track, record, and aggregate power outages across the United States.



City of Wellington Power Outages Map

Track, record, and stay informed about power outages in City of Wellington with our dedicated platform. Access detailed and up-to-date information on electricity outages throughout the area.

[Wellington region power outage . Meridian Energy](#)

Experiencing a power outage in the Wellington region? Find out who to contact about your power cut and where you can get more information.



Wellington residents without power 'left in limbo' as power outage goes

"Wellington Electricity anticipates restoring the bulk of its remaining customers without power by Monday evening, however further repairs will be necessary including streetlight circuit restoration."



Wellington Power Outages Map

Find out the current and scheduled power outages in Wellington and its suburbs with this interactive map. You can also check the energy status and the reasons ...



Wellington Power Outages Map

Check out the current power outage schedule for Wellington (New Zealand), featuring detailed timings and updates to help you stay informed and ready for any disruptions.



[Northern Colorado town loses power unexpectedly amid planned ...](#)



Downtown Wellington lost power amid strong winds Friday despite not being in an area where Xcel planned outages.



12.8V6Ah

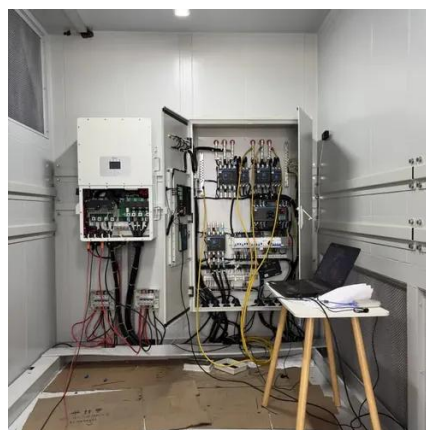
Nominal voltage (V):12.8
 Nominal capacity (Ah):6
 Rated energy (Wh):76.8
 Maximum charging voltage (V):14.6
 Maximum charging current (A):6
 Floating charge voltage (V):13.6-13.8
 Maximum continuous discharge current (A):10
 Maximum peak discharge current @10 seconds (A):20
 Maximum load power (W):100
 Discharge cut-off voltage (V):10.8
 Charging temperature (°C):-20-+50
 Discharge temperature (°C):-20-+60
 Working humidity: <95% R.H (non condensing)
 Number of cycles (25 °C, 0.5C, 100%DoD): >2000
 Cell combination mode: 32700-4s1p
 Terminal specification: T2 (6.3mm)
 Protection grade: IP65
 Overall dimension (mm):90*107*107mm
 Reference weight (kg):0.7
 Certification: un38.3/msds

[Wellington.Scoop » Seven days after the storm, "a handful of homes](#)

There are still 286 households without power across Wellington since the storm that tore down trees and power lines on Thursday. The outages are down from a total of 8000 in the region

Wellington Power Outage Schedule

Wellington Power Outage schedule for today and tomorrow. Find out about planned and emergency power cuts in your area.



Outages and Faults

Information about planned and unplanned outages and faults on WEL's network and how to report an outage or fault.



Contact Us

For catalog requests, pricing, or partnerships, please visit:

<https://www.iwap.com.pl>

Phone: +34 919 456 782

Email: info@iwap.com.pl

Scan the QR code to access our WhatsApp.

