



# Westinghouse ifr14500 specs





## Overview

---

Specifications Chemistry: Lithium Iron Phosphate Voltage: 3.2 Capacity: 500mAh Size: 14500 (same height & diameter of AA) Packaging Dimensions: 3.18 LBS UPC: 889554008010. The Westinghouse Lithium-iron phosphate batteries are specially designed and tested to provide the best possible performance for outdoor solar-powered lighting. The battery offers a longer life cycle, and its wide operating temperature range provides an. Please check the dimensions of your battery before purchasing: This is not a 4/5 AA (14430) size battery and will not fit in place of 4/5 AA (14430) rechargeable batteries, this is a AA size battery that is included- 8x Westinghouse AA 5000mAh 3. Battery Cell Performance Criteria 4. That technology was the basis for the global electrical network the world.



## Westinghouse ifr14500 specs

---

### [14500 Rechargeable Batteries IFR14500 4 pack Westinghouse ...](#)



The Westinghouse Lithium-iron phosphate batteries are specially designed and tested to provide the best possible performance for outdoor solar-powered lighting. The battery offers a long lifespan and ...

### [Westinghouse IFR 14500 3.2V Lithium Iron Phosphate LiFePO4 Solar](#)

The Westinghouse IFR Lithium-Iron Phosphate Rechargeable Batteries provide high-quality green energy with excellent performance. Specifications. Applications Primarily Solar Lighting Solar ...



### [Westinghouse 14500 3.2V LiFePO4 Lithium Iron Phosphate ...](#)

[SPECIFICATIONS] - 3.2 volt, 500mAh, Lithium-Iron Phosphate LiFePO4, Height:1.995in, Diameter:0.542in [GREEN ENERGY] - Energy efficient and environmentally friendly.

## Specification Approval Sheet

Battery Cell Drawing (all unit in mm, not in scale) . This document describes the Product Specification of the Lithium-ion rechargeable battery cell supplied by O'CELL (O'cell Technology CO., LTD).  
4. ...



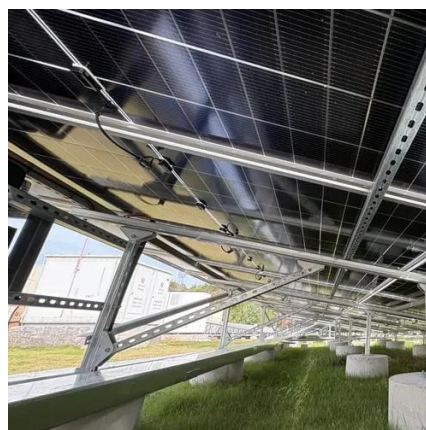
[Westinghouse IFR14500 Lithium Iron Phosphate 3.2V ...](#)

Westinghouse IFR14500 Lithium Iron Phosphate 3.2V 500mAh Rechargeable ...



**IFR14500EC Datasheet**

All specifications are correct at time of creation. All specifications and operation conditions contained in this datasheet are subject to change or improvement without prior notice to the user.



[Westinghouse IFR14500 Lithium Iron Phosphate Rechargeable Battery](#)

Specifications Chemistry: Lithium Iron Phosphate Voltage: 3.2 Capacity: 500mAh Size: 14500 (same height & diameter of AA) Packaging Dimensions: 3.54" x 4.63" x 0.56" ( W x H x D) Packaging ...



[Lithium-iron Phosphate Battery - IFR14500](#)



The Westinghouse Lithium-iron phosphate batteries are specially designed and ...



### [Lithium-iron Phosphate Battery - IFR14500](#)

The Westinghouse Lithium-iron phosphate batteries are specially designed and tested to provide the best possible performance for outdoor solar-powered lighting. The battery offers a long lifespan and ...



### [Westinghouse IFR14500 Lithium Iron Phosphate 3.2V 500mAh ...](#)

Westinghouse IFR14500 Lithium Iron Phosphate 3.2V 500mAh Rechargeable Battery Blister Pack of 4 - For Solar Lights. Lithium-Iron Phosphate Batteries are perfect fit for outdoor solar powered equipment.



### [Westinghouse 3.2V IFR14500 500mAh LiFEp04 Batteries \(4 Pack\)](#)

Product Home Westinghouse Westinghouse 3.2V IFR14500 500mAh LiFEp04 Batteries (4 Pack)





## Contact Us

---

For catalog requests, pricing, or partnerships, please visit:

<https://www.iwap.com.pl>

Phone: +34 919 456 782

Email: [info@iwap.com.pl](mailto:info@iwap.com.pl)

Scan the QR code to access our WhatsApp.

