



What are the battery energy storage system equipment for export communication base stations





Overview

The core hardware of a communication base station energy storage lithium battery system includes lithium-ion cells, battery management systems (BMS), inverters, and thermal management components. Energy storage systems (ESS) have emerged as a cornerstone solution, not only. The one-stop energy storage system for communication base stations is specially designed for base station energy storage. Users can use the energy storage system to discharge during load peak periods and charge from the grid during low load periods, reducing peak load demand and saving electricity. In such cases, energy storage systems play a vital role, ensuring the base stations remain unaffected by external power disruptions and maintain stable and efficient communication. Remote base stations often rely on independent power systems. 45V output meets RRU equipment.



What are the battery energy storage system equipment for export co



[Communication Base Station Energy Solutions](#)

During the day, the solar system powers the base station while storing excess energy in the battery. At night, the energy storage system discharges to supply power to the base station, ensuring 24/7 ...

[Communication Batteries: Why Telecom Base Stations Have Unique ...](#)

The phrase "communication batteries" is often applied broadly, sometimes including handheld radios, emergency devices, or general-purpose backup batteries. In practice, when ...



[Communication Base Station Backup Battery](#)

When natural disasters cut off power grids, when extreme weather threatens power supply safety, our communication backup power system with intelligent charge/discharge management and military ...

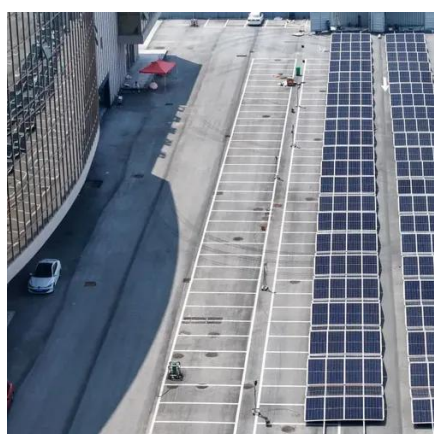
[Lithium battery is the magic weapon for communication base station](#)

The containerized energy storage system is composed of an energy storage converter, lithium iron phosphate battery storage unit, battery management system, and pre-assembled container.



Communication base station energy storage battery system

A telecom battery backup system is a comprehensive portfolio of energy storage batteries used as backup power for base stations to ensure a reliable and stable power supply.



Energy Storage Equipment, Energy storage solutions, Lithium battery

To cope with the problem of no or difficult grid access for base stations, and in line with the policy trend of energy saving and emission reduction, Huijue Group has launched an innovative ...



Energy Storage in Telecom Base Stations: Innovations & Trends

Base stations, especially in remote or off-grid areas, increasingly utilize hybrid systems combining ESS with renewable sources like solar PV or small wind turbines.



Energy Storage for Communication Base



The one-stop energy storage system for communication base stations is specially designed for base station energy storage. Users can use the energy storage system to discharge during load peak ...



[How Communication Base Station Energy Storage Lithium Battery ...](#)

The core hardware of a communication base station energy storage lithium battery system includes lithium-ion cells, battery management systems (BMS), inverters, and thermal

[Energy Storage Solutions for Communication Base Stations](#)

Lithium-ion batteries are among the most common due to their high energy density and efficiency. However, other options such as lead-acid batteries, flow batteries, and supercapacitors ...





Contact Us

For catalog requests, pricing, or partnerships, please visit:

<https://www.iwap.com.pl>

Phone: +34 919 456 782

Email: info@iwap.com.pl

Scan the QR code to access our WhatsApp.

