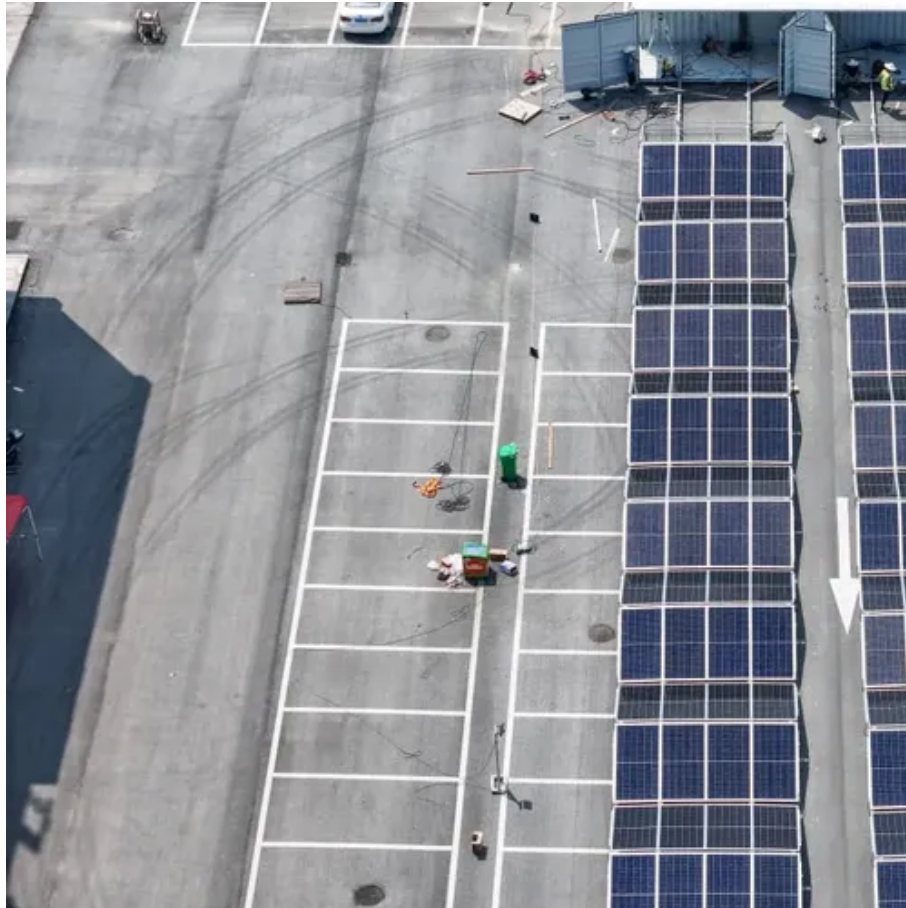




# What are the fire energy storage integrated systems





## Overview

---

Fire safety systems in energy storage require integration between Battery Management Systems (BMS), Combustible Gas Detection systems, Smoke and Temperature Sensors, and other related systems to be effective during an incident. Battery Energy Storage Systems, or BESS, help stabilize electrical grids by providing steady power flow despite fluctuations from inconsistent generation of renewable energy sources and other disruptions. Our detection and suppression technologies help you manage it with confidence. is undergoing a radical transformation. As overall demand for energy increases in our modern world – so does the use of renewable sources like wind and. Powering the Future: Safeguarding Today with Energy Storage Systems According to the National Fire Protection Association (NFPA), an energy storage system (ESS), is a device or group of devices assembled together, capable of storing energy in order to supply electrical energy at a later time. Thermal runaway releases highly flammable gases and oxygen, which can accumulate and cause intense fires or powerful explosions within confined battery enclosures. Many. This article aims to explore energy storage fire safety from several perspectives: system composition and working principles, key performance aspects, communication with other devices, application scenarios, maintenance and management, and industry standards and regulations.



## What are the fire energy storage integrated systems



### [Introduction to Energy Storage Fire Fighting System](#)

This article aims to explore energy storage fire safety from several perspectives: system composition and working principles, key performance aspects, communication with other devices,

### [Mitigating Fire Risks in Lithium-Ion Battery Energy Storage Systems](#)

The use of a well-designed battery management system for monitoring, gas detection systems for early warning, and a total immersion concentrated aerosol fire suppression system for ...



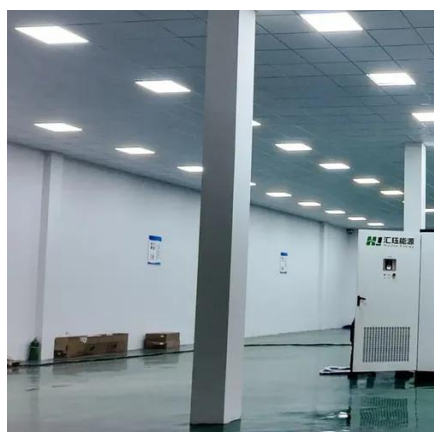
### [Battery Energy Storage Systems: Main Considerations for Safe](#)

This webpage includes information from first responder and industry guidance as well as background information on battery energy storage systems (challenges & fires), BESS installation ...



### **Advances and perspectives in fire safety of lithium-ion battery energy**

In this review, we comprehensively summarize recent advances in lithium iron phosphate (LFP) battery fire behavior and safety protection to solve the critical issues and develop safer LFP ...



### [Advanced Fire Safety Solutions for Energy Storage Systems: ...](#)

Fire safety systems in energy storage require integration between Battery Management Systems (BMS), Combustible Gas Detection systems, Smoke and Temperature Sensors, and other ...

### [Fire Suppression for the Energy Storage Systems Industry](#)

Thermal runaway releases highly flammable gases and oxygen, which can accumulate and cause intense fires or powerful explosions within confined battery enclosures. The dense packing of cells ...



### [Advanced Fire Detection and Battery Energy Storage Systems \(BESS\)](#)

These systems gather surplus energy from solar and wind sources, storing it in batteries for later discharge. This process helps stabilize the grid by ensuring a steady power supply and ...

### [Energy Storage Systems: A State of the Union](#)



Because of the unique hazard BESS can have with stranded energy, you can't just stack old equipment in a storage room and deal with it later. IFC 2024 also has a new requirement for a fire ...



### [Fire Protection for Lithium-ion Battery Energy Storage Systems](#)

Energy storage is a key component in balancing out supply and demand fluctuations. Today, lithium-ion battery energy storage systems (BESS) have proven to be the most effective type and, as a result, ...

### [Fire Protection for Lithium-ion Battery Energy Storage Systems](#)

Aspirated smoke and off-gas detection systems  
Lithium-ion battery cabinet protection  
Siemens aspirated smoke and Off-Gas Particle detection  
How does ASD "Off-Gas Particle" (OGP) detection work?  
Venturi bypass flow  
Insect filter Chamber flow  
Dust  
Intelligent Classification of Airborne Particles  
Advantages of using blue and infrared light scattering  
Easy Installation and Integration  
Low Maintenance and Long Product Lifecycle  
Features and Benefits  
Applications  
As its name implies - "aspirated" smoke and off-gas detection systems use an "aspirator" mounted in a detector unit. The detector connects to a sample pipe network mounted within the area or object being protected. Using the suction from the aspirator, air is continuously sampled and transported to the detection chamber for analysis for particles  
See more on [assets.new.siemens.com](https://assets.new.siemens.com)  
OSFM



## **Energy Storage Systems , OSFM**

According to the National Fire Protection



Association (NFPA), an energy storage system (ESS), is a device or group of devices assembled together, capable of ...



## Energy Storage Systems , OSFM

According to the National Fire Protection Association (NFPA), an energy storage system (ESS), is a device or group of devices assembled together, capable of storing energy in order to supply electrical ...



## Contact Us

---

For catalog requests, pricing, or partnerships, please visit:

<https://www.iwap.com.pl>

Phone: +34 919 456 782

Email: [info@iwap.com.pl](mailto:info@iwap.com.pl)

Scan the QR code to access our WhatsApp.

