



What does the communication base station lithium-ion battery communication equipment include





Overview

The core hardware of a communication base station energy storage lithium battery system includes lithium-ion cells, battery management systems (BMS), inverters, and thermal management components. Lithium batteries have emerged as a key component in ensuring uninterrupted connectivity, especially in remote or off-grid locations. Understanding how these systems operate is. The phrase “communication batteries” is often applied broadly, sometimes including handheld radios, emergency devices, or general-purpose backup batteries. However, their applications extend far beyond this.



What does the communication base station lithium-ion battery comm



[Use of Batteries in the Telecommunications Industry](#)

The Alliance for Telecommunications Industry Solutions is an organization that develops standards and solutions for the ICT (Information and Communications Technology) industry.

Telecommunication Battery

Telecommunication battery (telecom battery), also known as telecom backup battery or telecom battery bank, primarily refer to the backup power systems used in base stations and are a ...



[Overview of Telecom Base Station Batteries](#)

In terms of technical realization, telecom energy storage systems usually adopt lead-acid batteries or lithium ion solar batteries as the energy storage medium.

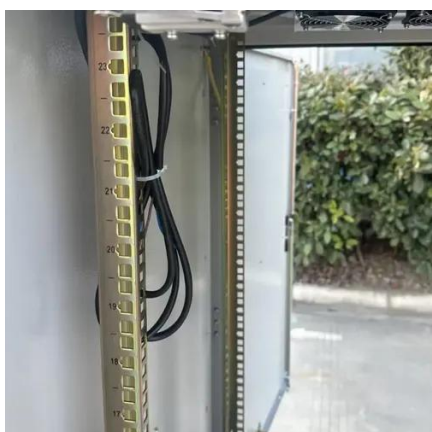
[Communication Base Station Li-ion Battery Market](#)

Lithium-ion (Li-ion) batteries exhibit distinct advantages over traditional lead-acid batteries in base station deployments, particularly in maintenance and lifespan-related costs.



[How Communication Base Station Energy Storage Lithium Battery ...](#)

The core hardware of a communication base station energy storage lithium battery system includes lithium-ion cells, battery management systems (BMS), inverters, and thermal ...



[White Paper on Lithium Batteries for Telecom Sites](#)

The Lithium Battery System is an energy storage module, also called a Lithium Battery Pack. It consists of lithium battery cells, a battery management system (BMS), mechanical enclosure for electrical ...



[Communication Batteries: Why Telecom Base Stations Have Unique ...](#)

In modern telecom networks, ensuring uninterrupted connectivity is critical. The term "communication batteries" is often used ambiguously online, leading to confusion among operators, ...



[Lithium battery is the magic weapon for communication base station](#)



Intelligent energy storage lithium battery can effectively protect the base station battery in the event of the accidental short circuit, lightning shock, and other conditions, timely start the ...

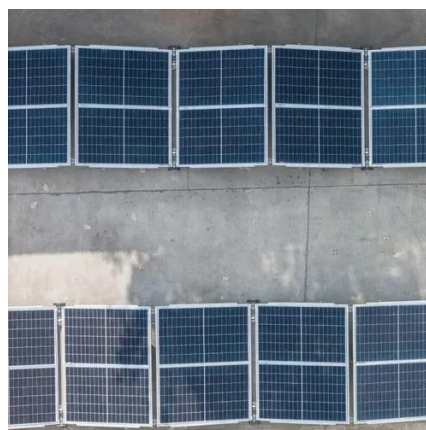


[Energy Storage in Telecom Base Stations: Innovations & Trends](#)

Explore cutting-edge Li-ion BMS, hybrid renewable systems & second-life batteries for base stations. Discover ESS trends like solid-state & AI optimization. Learn more at CESC2025.

[The Role of Telecom Lithium Batteries in Modern Communication](#)

Telecom lithium batteries serve as the backbone of modern communication networks, ensuring uninterrupted service from mobile networks to satellite communications.





Contact Us

For catalog requests, pricing, or partnerships, please visit:

<https://www.iwap.com.pl>

Phone: +34 919 456 782

Email: info@iwap.com.pl

Scan the QR code to access our WhatsApp.

