



# What equipment is included in the EMS for communication base stations





## Overview

---

What's the standard components of an EMS communication system. EMS communications are typically composed of a base station, Mobile radios (transmitter/ receivers), portable radios (transmitter/ receivers), repeaters, Digital equipment (encoders, decoders, and mobile data terminals), and cell. EMS telecommunications equipment shall be configured to allow the EMS MD, or designee, to monitor all vehicle to hospital transmissions and hospital to vehicle transmissions within the System (b). MOBILE RADIOS: often vehicular-mounted devices that are installed in the ambulance. MOBILE TRANSMITTERS: usually transmit at a lower power than the base stations do--typically 20-50 watts--that. Describe the role of the Federal Communications Commission in EMS system communications. Discuss the role of an Emergency. Public safety solutions for EMS from ERS Wireless include: Motorola APX radios are ideal for ambulatory staff to keep them connected to 911 dispatchers and other public safety agencies. The APX Series radios are offered with a variety of models and options to help meet the needs of each agency. Patients must be able to access the system, the system must be able to dispatch units, EMTs must have a means of communicating with medical direction and receiving facility, and EMTs must be able to communicate vital information to other personnel.



## What equipment is included in the EMS for communication base station




### EMS , ERS Wireless

ERS Wireless offers dependable two-way radios and video cameras that are crucial for EMS for their ability to facilitate quick, reliable communication and provide situational awareness, ultimately ...

### [ch5 communication review Flashcards , Quizlet](#)

EMS communications are typically composed of a base station, Mobile radios (transmitter/ receivers), portable radios (transmitter/ receivers), repeaters, Digital equipment ...



 **TAX FREE**

### ENERGY STORAGE SYSTEM

**Product Model**  
HJ-ESS-215A(100KW/215KWh)  
HJ-ESS-115A(50KW 115KWh)

**Dimensions**  
1600\*1280\*2200mm  
1600\*1200\*2000mm

**Rated Battery Capacity**  
215KWH/115KWH

**Battery Cooling Method**  
Air Cooled/Liquid Cooled



### [The components included in most EMS communication systems in](#)

Thankfully, this whole process takes a very short time and doesn't require much thought from the EMS professionals on-scene. Other communication equipment that can be utilized for EMS ...

### **C8: Communications [5/5/03]**

Telecommunications equipment necessary to fulfill the requirements of this Part shall be staffed and maintained 24-hours every day, including radio base stations, telephone and computer ...



### EMT Chapter 5 Flashcards , Quizlet

The FCC has jurisdiction over all radio operations nationally, including those in EMS systems. They license base stations, assign radio call signs, approve equipment for use, limit transmitter output, ...

### EMR IM CH04

Describe the following components of an EMS communications system: base station, mobile two-way radio, portable radio, repeater, digital radio equipment, cellular telephone.



### Communications-EMT -- Hopper Institute®

Communication in EMS is essential. Patients must be able to access the system, the system must be able to dispatch units, EMTs must have a means of communicating with medical direction and ...

[Guide for the Selection of Communication Equipment for ...](#)



The RF communication equipment considered in this guide includes portable radios, mobile radios, base/fixed station radios, repeaters, and base station/repeaters.

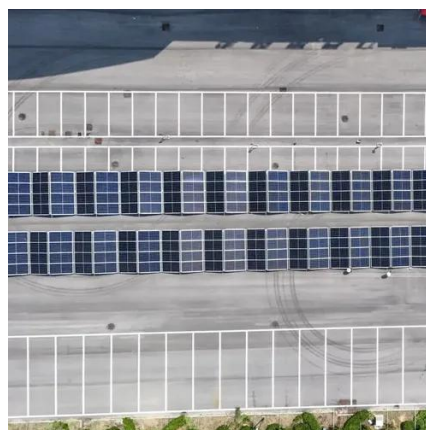


### Ch. 5 Notes.pdf

Chapter 5 - Communication EMS Communications System Components of an Emergency Communication System Base station Serves as a dispatch and coordination center High power ...

### Microsoft PowerPoint

EMTs often communicate with receiving facilities by cellular telephone. These devices are simply low-power portable radios while satellite phones or satphones are another option. Both these devices ...





## Contact Us

---

For catalog requests, pricing, or partnerships, please visit:

<https://www.iwap.com.pl>

Phone: +34 919 456 782

Email: [info@iwap.com.pl](mailto:info@iwap.com.pl)

Scan the QR code to access our WhatsApp.

