



What happened to the solar inverter disconnection





Overview

A solar inverter failure can result in reduced energy production or a complete shutdown of your solar panel system. An AC (alternating current) disconnect separates the inverter from the electrical grid. In a solar PV system it's usually mounted to the wall between the inverter and utility meter, and can be a standalone switch. Yet the inverter stops. It is a safety feature called anti-islanding. Here is how it works and how to keep your home running during an outage without breaking the rules. Department of Energy, grid-tied. Disconnect switches are often overlooked in the planning and installation of commercial PV systems—until they result in cost overruns, code compliance issues, or safety hazards. Understanding the common failures in these systems is essential for maintaining efficiency and ensuring continuous power supply. What if the solar panel is disconnected?

- 1.



What happened to the solar inverter disconnection



[Solar Disconnect Switch Guide: Types, Installation & Safety \(2025\)](#)

Complete guide to solar disconnect switches including AC/DC types, sizing, installation requirements, and safety considerations. Expert insights for installers and homeowners.

[What if the solar panel is disconnected?.. NenPower](#)

Inverters, which convert direct current from solar panels into alternating current usable by home appliances, are particularly vulnerable. If disconnected suddenly, they may suffer damage due ...



[What are solar AC and DC disconnects and why do you need them?](#)

A solar DC disconnect (or PV disconnect) shuts off the direct current (DC) power traveling from the solar panels to the inverter. DC disconnects are often built into the solar inverter.

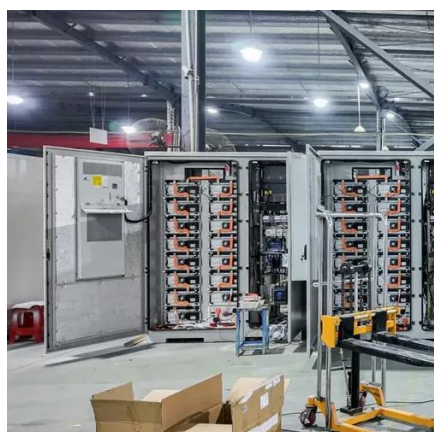
[Solar Inverter Failures: Causes, Consequences, and Impact on](#)

Solar inverters play a crucial role in converting the DC electricity generated by solar panels into AC electricity that can be used by homes and fed into the grid. Understanding the ...



[Disconnect Switches: The Silent Risk That Will Haunt Your Solar ...](#)

Disconnect switches are often overlooked in the planning and installation of commercial PV systems--until they result in cost overruns, code compliance issues, or safety hazards.



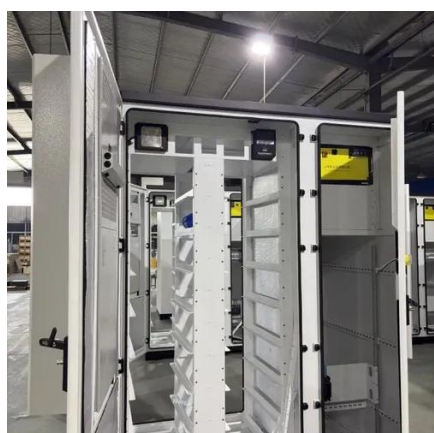
[Stop Confusion: Why Inverters Cut Out When the Grid ...](#)

Why grid-tied inverters shut down during a power outage, how anti-islanding protects crews, and proven ways to keep critical loads on with batteries.



[What Happens if Your Solar Inverter Fails?](#)

Discover the consequences and solutions for solar inverter failures. Learn how to handle inverter issues and keep your solar panel system running smoothly.



[Sudden disconnection from the grid of a photovoltaic system](#)



What happens to the inverters in the event of a sudden disconnection from the grid of a photovoltaic system, for example due to an intervention of a RCD, or fuse, or circuit breaker between ...



[PV System Disconnect on Hybrid Inverters . Information by Electrical](#)

If the PV array were disconnected from the inverter and the inverter still connected to the BESS then the PV system still exists. It does not become an AC BESS system even though the line ...

Common Issues in Solar Inverter Systems

Explore the most common solar inverter system issues and how to fix them. Learn how to keep your solar power system running efficiently.





Contact Us

For catalog requests, pricing, or partnerships, please visit:

<https://www.iwap.com.pl>

Phone: +34 919 456 782

Email: info@iwap.com.pl

Scan the QR code to access our WhatsApp.

