



What is the line for solar power generation





Overview

A generation interconnect (gen-tie) line is a series of poles, wires, cables, anchors and foundations connecting nearby power generation sites and substations. That point is called the “point of interconnection,” or POI. The system transmits an electrical current to a substation before the electrical grid in order to condition it for long-distance. What is the line type of solar power dedicated line 1. There are two forms of energy generated from the sun for our use – electricity and heat.



What is the line for solar power generation



[The Complete Guide on Solar Interconnection](#),
[Genie Solar](#)

Solar interconnection is the cornerstone of modern renewable energy systems. By connecting solar energy systems to the grid, interconnection allows behind-the-meter solar customers to access ...

[How to connect a PV solar system to the utility grid](#)

There are two basic approaches to connecting a grid-tied solar panel system, as shown in the wiring diagrams below. The most common is a "LOAD SIDE" connection, made AFTER the main breaker. ...



How Does Solar Work?

Solar technologies convert sunlight into electrical energy either through photovoltaic (PV) panels or through mirrors that concentrate solar radiation. This energy can be used to generate electricity or be ...

Solar Power Grid Connection Explained

Learn how solar power is connected to the electrical grid, how it works, and how net metering benefits homeowners. Discover the role of inverters and grid stability.



[What Is a Gen-Tie Line? , Guide to Gen-Tie Lines](#)

Wind and solar energy generation facilities are two of the most prolific clean energy producers, and they are multiplying faster than most other sources. New gen-tie lines should accommodate their wind or ...

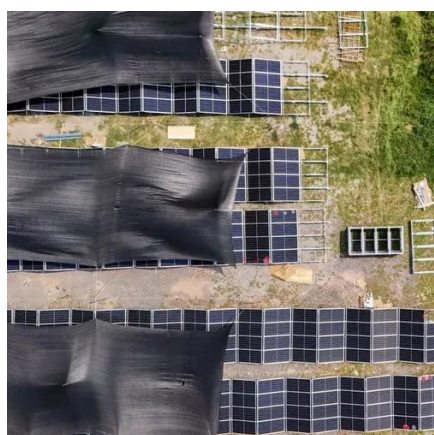
[What Is a Gen-Tie Line? , Guide to Gen-Tie Lines](#)

Wind and solar energy generation facilities are two of the most ...



[Solar Power and the Electric Grid, Energy Analysis \(Fact Sheet\)](#)

This fact sheet illustrates the roles of distributed and centralized renewable energy technologies, particularly solar power, and how they will contribute to the future electricity system.



[Electric Transmission and Transmission Facilities](#)



For newly constructed solar energy power plants, if no existing suitable transmission facilities were available, new transmission lines and associated facilities would be required.



[What is the line type of solar power dedicated line .NenPower](#)

The line type of a solar power dedicated line is typically defined as a direct current (DC) line, alternating current (AC) line, or a hybrid type that incorporates both.



[How does solar power work? . National Grid](#)

Solar power works by converting energy from the sun into power. There are two forms of energy generated from the sun for our use - electricity and heat. Both are generated through the use of solar ...



[How Does a Solar Farm Connect to the Grid?](#)

Community solar projects are typically 10 MWac or smaller. These projects almost always connect to a three-phased distribution line. A distribution line is conceptually the same as a transmission line but ...



Contact Us

For catalog requests, pricing, or partnerships, please visit:

<https://www.iwap.com.pl>

Phone: +34 919 456 782

Email: info@iwap.com.pl

Scan the QR code to access our WhatsApp.

