



What is the power supply situation at Majuro Base Station





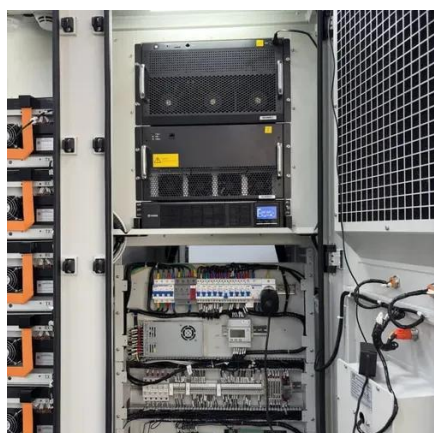
Overview

Unscheduled power outages have been repeatedly happening in Majuro, and power rationing went into effect late last week as MEC power plant staff struggled to repair one of the large engines that anchors power delivery to the capital atoll. Poorly functioning and non-functioning engines well beyond their useful lifespans are still in service in Majuro, causing instability in power service to the capital. Heine — elected for a second term Jan. 2 after a four-year hiatus — to make power one of the top priorities on her new government's agenda. 24, Heine signed a state of emergency. Majuro — Announced and emergency power outages, and power rationing have governed life in the capital of the Marshall Islands since late last year. was forced to import more than half-a-dozen rental containerized generators last year that currently provide the backbone of Majuro's power. Why does Majuro need a new power system?

In order to stabilize power service, the Marshalls. The Marshalls Energy Company (MEC) wishes to inform its valued customers and the general public that it is embarking on a significant milestone in our commitment to enhancing the reliability of electricity services on the island.



What is the power supply situation at Majuro Base Station

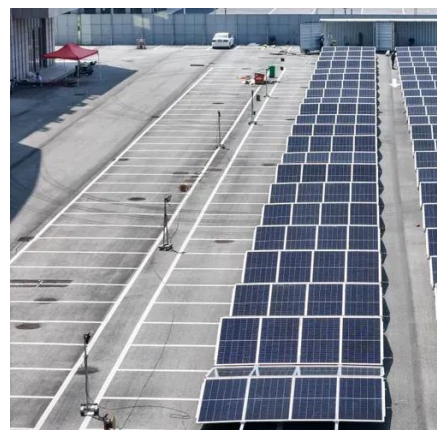


Press Releases

Majuro, Marshall Islands - The Laura community can now count on more reliable power thanks to MEC's recent completion of a backup generator installation in the area.

Heine declares power emergency

The power situation in Majuro has continued to deteriorate in January, with dozens of unplanned outages since the start of the new year, including two extended outages -- one of over 30 ...



[State of emergency looks to rectify Majuro's ongoing power problems](#)

On Jan. 24, Heine signed a state of emergency declaration for the power situation, adding resources and focus to Majuro's ongoing and deteriorating power situation. The backdrop to the ...

[Majuro's chronic power crisis continues to impact life and the ...](#)

Despite the national gym being officially blessed in mid-February following a two-year renovation, it is not fully operational because of the ongoing power crisis in Majuro.

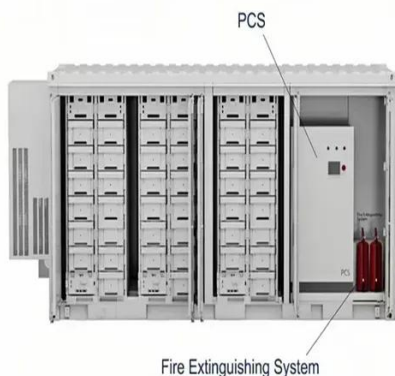


Majuro's power crisis continues

Unscheduled power outages have been repeatedly happening in Majuro, and power rationing went into effect late last week as MEC power plant staff struggled to repair one of the large ...

What is the power supply situation of the Marshall Islands base ...

In order to stabilize power service, the Marshalls Energy Co. was forced to import more than half-a-dozen rental containerized generators last year that currently provide the backbone of Majuro's power.



Power crisis continues in Majuro

Daily outages and power rationing are currently a way of life as the Marshalls Energy Company struggles to meet power demands in Majuro with a handful of engines well beyond their ...

Question 1.



The Majuro Power Plant supplies electricity to critical national infrastructure, including government operations, hospitals, water and wastewater systems, ports, telecommunications, and ...



[PRESS RELEASE: MEC Announces Upcoming Demolition Work of Power ...](#)

Starting next month, we will initiate the demolition of the aging Power Plant Station 1 (PS1). This crucial step represents a substantial leap forward in our mission to modernize the power ...



Contact Us

For catalog requests, pricing, or partnerships, please visit:

<https://www.iwap.com.pl>

Phone: +34 919 456 782

Email: info@iwap.com.pl

Scan the QR code to access our WhatsApp.

