



# What is the size of a 740w solar panel





## Overview

---

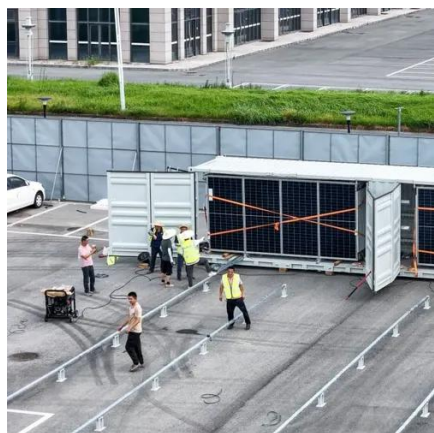
The standard residential solar photovoltaic panel size you'll see most often is based on a 60-cell configuration, typically measuring about 67 inches long by 40 inches wide. This size offers the best balance between power output, handling ease, and fitting standard roof dimensions. System Voltage (V) : Stringent quality control is the cornerstone of Higon's manufacturing. At 40-46 pounds, they can be safely handled by. Example: 5kW solar system is comprised of 50 100-watt solar panels. Alright, your roof square footage is 1000 sq ft. Can you put a 5kW solar system on your roof?

For that, you will need to know what size is a typical 100-watt solar panel, right?

To bridge that gap of very useful knowledge needed. The heterojunction Mysolar solar panel GOLD series is one of the TOP Premium Modules on market. High Power between 710W and 740W with the best HJT Cells M12 technology. Impressive Power range of up to 7740W with high dimensions (2384 X1303x35mm) represents a unique offer for residential, C&I, and. Note: Your Enquiry will be sent directly to Centro Energy Co. NuVision Solar LLC Solar Panel Series 132HC-G12 700-740W. Understanding these specifications is crucial for determining roof.



## What is the size of a 740w solar panel



### [Solar Panel Size & Dimensions Guide 2025 . Complete Specs](#)

In this comprehensive guide, you'll learn everything you need to know about solar panel sizing, from standard dimensions to weight considerations, helping you determine the perfect solar ...

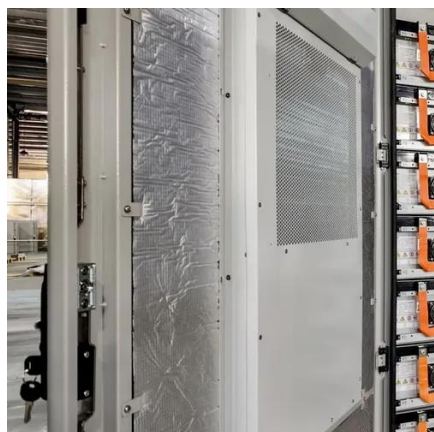
### [740W Solar Panels Mono Perc 700W Bifacial N-Type Type N Hjt](#)

Our Solar PV module factory covers 90,000 Square Meters, has more than 750 employees. With an emphasis on management, research and development, Yangtze Solar continuously manufactures ...



### [The Ultimate Guide to Solar Panel Size, Weight & Wattage \(2025\)](#)

Find the exact solar panel size & weight in our 2025 guide. Our complete chart compares models by ft/cm and lbs/kg to help you plan your installation.



### [NEW HJT 730W 740W 750W Bifacial Double Glass Half Cell Solar Panel](#)

NEW HJT 730W 740W 750W Bifacial Double Glass Half Cell Solar Panel Bifacial modules combine leading HJT Technology, MBB and half-cell. The Higon HJT Bifacial Half-cell Module can reach ...



### HJT Solar Panel Mysolar Gold 740W

Impressive Power range of up to 7740W with high dimensions (2384 X1303x35mm) represents a unique offer for residential, C& I, and solar farm projects. Best N-type cell technology ensure high production ...



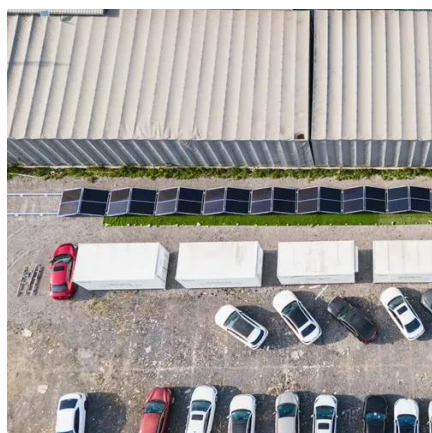
### [Solar Panel Size Guide , Best Panel Size for Your Roof](#)

Learn how to choose the ideal solar panel size for your home. Get expert tips, standard dimensions, and a size chart to simplify your solar decisions.



### [Standard Solar Panel Sizes And Wattages \(100W-500W Dimensions\)](#)

The goal here is to get to the average solar panel size by wattage. You can find typical dimensions of 100W, 150W, 170W, 200W, 200W, 220W, 300W, 350W, 400W, and 500W solar panels summarized ...



### Solar Panel Sizes and Wattage Explained



Depending on manufacturer and type, these dimensions are usually available in millimetres which can be easily converted to centimetres or meters. For example, a standard PV ...



[NuVision Solar , 132HC-G12 700-740W , Solar Panel Datasheet](#)

NuVision Solar LLC Solar Panel Series 132HC-G12 700-740W. Detailed profile including pictures, certification details and manufacturer PDF.

WORKING PRINCIPLE



### [standard solar photovoltaic panel sizes explained](#)

The standard residential solar photovoltaic panel size you'll see most often is based on a 60-cell configuration, typically measuring about 67 inches long by 40 inches wide.





## Contact Us

---

For catalog requests, pricing, or partnerships, please visit:

<https://www.iwap.com.pl>

Phone: +34 919 456 782

Email: [info@iwap.com.pl](mailto:info@iwap.com.pl)

Scan the QR code to access our WhatsApp.

