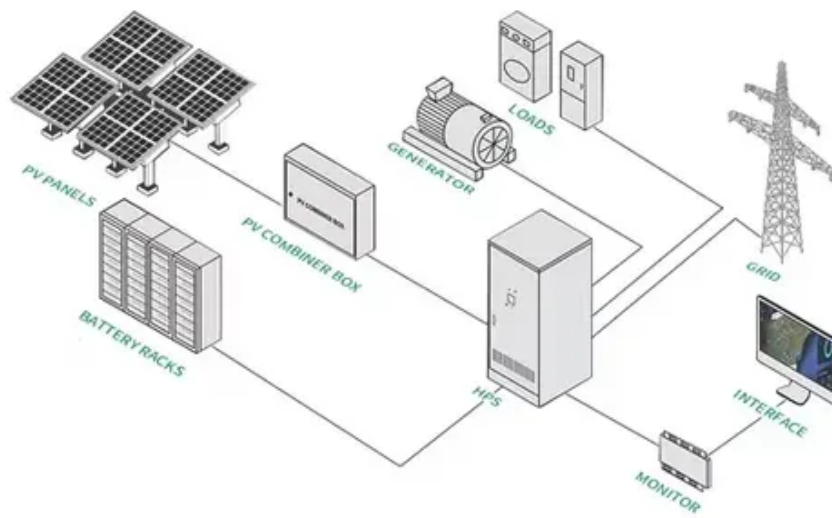




What is the size of solar panels for home decoration





Overview

Q1: What are the standard dimensions of a solar panel in 2025?

A1: For homes, it's about 1. For commercial projects, around 2. Q2: Do bigger panels mean better performance?

Not always. Standard Residential Panels Optimize Space and Handling: The industry-standard 60-cell panel dimensions (65" × 39" × 1.5") aren't arbitrary - they represent the optimal balance between power output, installation ease, and roof space utilization. Understanding these dimensions is crucial for homeowners planning their solar installation, as panel size directly impacts system. Example: 5kW solar system is comprised of 50 100-watt solar panels. Alright, your roof square footage is 1000 sq ft. Can you put a 5kW solar system on your roof?

For that, you will need to know what size is a typical 100-watt solar panel, right?

To bridge that gap of very useful knowledge needed. The size of solar panels with the same cell count varies slightly, depending on the brand and model. Still, most 60-cell solar panels have a size of 39" X 66" and most 72-cell solar panels have sizes of around 39" X 77". 65 x 1 meter), weighs around 40 pounds (18 kg), and produces roughly 400 watts. But size alone doesn't tell the full story. The insights that follow weigh the gains and compromises of large versus compact panels, helping you choose a size that truly fits - Solar panel size is the key metric of every installation.



What is the size of solar panels for home decoration



Solar Panel Size: 2026 Detailed Guide

In this article, we will discuss all the important aspects of solar panel size. This guide will help you select the right solar panel size through detailed calculations.

Solar Panel Size Dimensions

Most homes end up needing 15-25 panels, depending on roof size, shading, and household energy use. The smartest move is to get a custom solar quote. That way, you'll know exactly which panel size ...

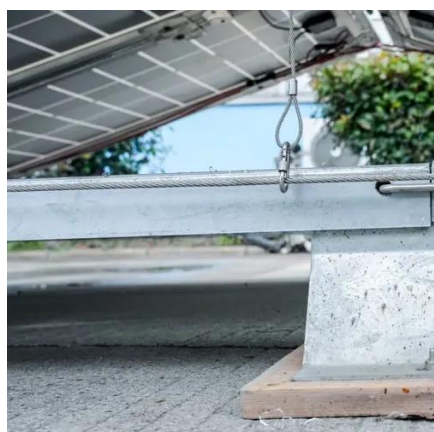


What Are the Common Solar Panel Sizes?

Still, most 60-cell solar panels have a size of 39" X 66" and most 72-cell solar panels have sizes of around 39" X 77". However, panels with cell counts of 96, 120, and 144 may have different ...

[Understanding Solar Panel Dimensions In 2025: A Complete Size Guide](#)

Explore the most common solar panel dimensions in 2025, including residential and commercial sizes. Learn how solar panel size dimensions affect power, installation, and efficiency.



[Solar Panel Size Guide , Best Panel Size for Your Roof](#)

Learn how to choose the ideal solar panel size for your home. Get expert tips, standard dimensions, and a size chart to simplify your solar decisions.

[Solar Panel Size & Dimensions Guide 2025 , Complete Specs](#)

In this comprehensive guide, you'll learn everything you need to know about solar panel sizing, from standard dimensions to weight considerations, helping you determine the perfect solar ...



Lower cost larger system

Verified Supplier

20Kwh
30Kwh

[What Is the Average Size of a Solar Panel? Quick Guide](#)

Most standard solar panels are around 65 by 40 inches. That's just under 18 square feet per panel.

[Standard Solar Panel Sizes And Wattages \(100W-500W Dimensions\)](#)



To bridge that gap of very useful knowledge needed, we have compared and averaged the sizes of 100-watt to 500-watt solar panels available on the market. The goal here is to get to the average solar ...



[Perfect Solar Panel Sizes for Your Home \(Expert Sizing Guide\)](#)

When choosing residential solar panels, you'll typically encounter two main configurations: 60-cell and 72-cell panels. 60-cell panels are the most popular choice for homes, measuring about ...



Contact Us

For catalog requests, pricing, or partnerships, please visit:

<https://www.iwap.com.pl>

Phone: +34 919 456 782

Email: info@iwap.com.pl

Scan the QR code to access our WhatsApp.

