



# What kind of electrical appliance is a photovoltaic panel





## Overview

---

A photovoltaic (PV) cell, commonly called a solar cell, is a nonmechanical device that converts sunlight directly into electricity. Sunlight is composed of photons, or particles of solar energy. Did you know that a single solar panel can power essential home appliances like lights, fans, and even a TV?

As I explored solar energy options for my home, I was surprised to find that many common appliances, including washing machines and refrigerators, can run efficiently on solar power. They are typically installed on the building's roofs or nearby locations with direct. Solar energy isn't just for powering lights; it can run a variety of household appliances and other electrical devices, bringing both convenience and sustainability to your home. A single PV device is known as a cell. Products such as solar water heaters and solar lights, and 4.



## What kind of electrical appliance is a photovoltaic panel

---

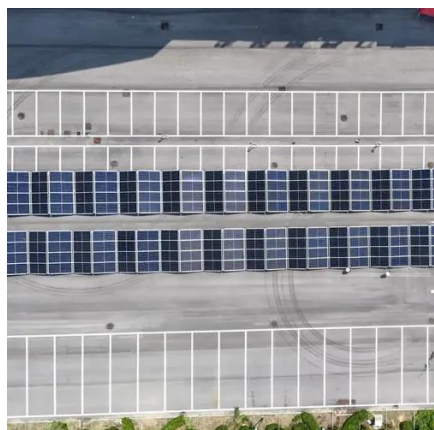


### [What are photovoltaic cells?: types and applications](#)

Photovoltaic cells, integrated into solar panels, allow electricity to be generated by harnessing the sunlight. These panels are installed on roofs, building surfaces, and land, providing ...

### [Which Home Appliances Can Run Or Operate On Solar Energy?](#)

Solar panels used for homes consist of interconnected photovoltaic cells that convert power from the sun's rays into electricity. These panels create energy, which is subsequently utilized to ...



### [What Appliances Can Be Powered by Solar Panels?](#)

Many people often ask, what appliances can be powered by solar panels? This guide breaks down everything you need to know, from lighting and refrigeration to heating and air ...

### [8 Home Appliances That Can Easily Run on Solar Energy](#)

Did you know that a single solar panel can power essential home appliances like lights, fans, and even a TV? As I explored solar energy options for my home, I was surprised to find that ...



## Photovoltaics and electricity

PV cells are electrically connected in a packaged, weather-tight PV panel (sometimes called a module). PV panels vary in size and in the amount of electricity they can produce.



### What kind of electrical appliances does solar energy belong to?

Among the most critical components in solar energy appliances are solar panels and inverters. Solar panels consist of photovoltaic cells that absorb sunlight and convert it into direct ...



### The Definitive Guide to Solar Home Appliances (From Kitchen

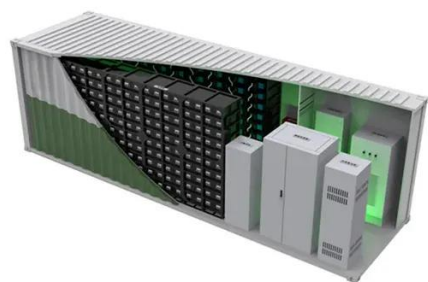
Solar home appliances are a whole new micro-universe, similar but at the same time completely different from those big solar panels you see on rooftops. From your kitchen to your living ...



## Solar Photovoltaic Technology Basics



To boost the power output of PV cells, they are connected together in chains to form larger units known as modules or panels. Modules can be used individually, or several can be connected to form arrays. ...



### [8 Home Appliances That Can Easily Run on Solar Energy](#)

Solar panels used for homes consist of interconnected photovoltaic ...

### Solar panel

A solar panel is a device that converts sunlight into electricity by using multiple solar modules that consist of photovoltaic (PV) cells. PV cells are made of materials that produce excited electrons ...



### Photovoltaic Cells

There are two main types of solar panel - one is the solar thermal panel which heats a moving fluid directly, and the other is the photovoltaic panel which generates electricity.

### Photovoltaics and electricity



Photovoltaic Cells Convert Sunlight Into Electricity  
The Flow of Electricity in A Solar Cell  
PV Cells, Panels, and Arrays  
PV System Efficiency  
PV System Applications  
History of PV Systems  
A photovoltaic (PV) cell, commonly called a solar cell, is a nonmechanical device that converts sunlight directly into electricity. Some PV cells can convert artificial light into electricity. Sunlight is composed of photons, or particles of solar energy. These photons contain varying amounts of energy that correspond to the different wavelengths of light. See more on [eia.gov](http://eia.gov)  
Published: Oct 1, 2024  
[energy.gov](http://energy.gov)



## Solar Photovoltaic Technology Basics - Department of Energy

[See More](#)

To boost the power output of PV cells, they are connected together in chains to form larger units known as modules or panels. Modules can be used individually, or several can be connected to form arrays. ...



## Contact Us

---

For catalog requests, pricing, or partnerships, please visit:

<https://www.iwap.com.pl>

Phone: +34 919 456 782

Email: [info@iwap.com.pl](mailto:info@iwap.com.pl)

Scan the QR code to access our WhatsApp.

