



What s inside the black cover of the photovoltaic panel





Overview

Monocrystalline cells: Cut from single silicon crystals, offering 20-24% efficiency with uniform black appearance. At the heart are photovoltaic (PV) cells that convert sunlight into electricity, supported by protective and structural layers that ensure it's delivered safely and reliably. Most panels include solar cells, tempered glass, encapsulant, a backsheet, a metal frame, an inverter, and a junction box. They are an increasingly popular and affordable source of renewable energy that continues to grow in relevance throughout the United States. Solar panels are composed. Encapsulation Material Choice Impacts Long-Term Performance: POE (Polyolefin Elastomer) films demonstrate superior moisture barrier properties and 0.45% annual degradation compared to 0. You may be familiar with the basics of how solar panels work — they absorb sunlight and transform it into power you can use to heat or cool your home, or. Solar cells are the main components of a solar panel. Instead, they use the photovoltaic effect to.



What's inside the black cover of the photovoltaic panel



[Plastic Covers on Solar Panels: What You Need to Know](#)

New solar panels often arrive with protective film--but should it stay on? This comprehensive guide explains the crucial difference between factory shipping films (which must be ...

[Inside the Anatomy of a Solar Panel -- Bent River Machine](#)

Backsheets are polymer-based layers that sit at the back of a solar panel; they're the bottom piece of bread in the solar panel sandwich. The backsheets provide a protective barrier ...



[What Are the Main Components of Solar Panels? A Structural ...](#)

What components make up a solar panel? This article explains the six key structural components--from front glass and solar cells to encapsulation materials, backsheet, frame and ...

What's inside the solar panel?

Typically made from polyester, polyvinyl fluoride (PVF), or even metal alloys, these materials reinforce the panel structure while providing essential thermal insulation. The backing ...

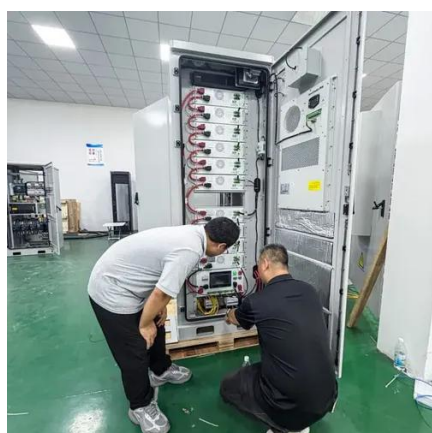


[Solar panel components: A complete guide to every part](#)

On the back of every solar panel is a small, weatherproof container called the junction box. Its job is to safely house the panel's electrical connections and protect them from debris and ...

[Understanding Solar Panel Components And How They Work](#)

Of all parts of a solar panel, the back sheet plays the most important role in preventing overheating. This sheet connects the back of a solar panel to the mounting surface and ensures the system's structural ...



What's Inside A Solar Panel?

Monocrystalline solar cells are black, with efficiencies of 17 to 22%. Meanwhile, polycrystalline solar cells are blue, with efficiencies of 15 to 17%. Both come with 25-year warranties.

[Components of a Solar Panel: Complete Technical Guide](#)



Monocrystalline cells: Cut from single silicon crystals, offering 20-24% efficiency with uniform black appearance. Premium panels now achieve over 24% efficiency using advanced cell ...



[Solar Panel Components Guide , Orlando FL , Radiant Energy](#)

The very top layer of any solar panel is a sheet of high-transmission tempered glass, usually about 3-4 mm thick. Its most obvious job is to be a tough, transparent barrier, defending the ...

Solar Panel Components

The back sheet is a thin layer of material that covers the back of the solar panel. Its primary function is to protect the inner components from moisture and other environmental factors.



- ✓ TELECOM CABINET
- ✓ BRAND NEW ORIGINAL
- ✓ HIGH-EFFICIENCY



Contact Us

For catalog requests, pricing, or partnerships, please visit:

<https://www.iwap.com.pl>

Phone: +34 919 456 782

Email: info@iwap.com.pl

Scan the QR code to access our WhatsApp.

