



What system does wind-solar hybrid communication base station belong to





Overview

Our company's wind-solar hybrid power supply system for communication base stations consists of the FD series wind turbines, solar cell modules, an integrated communication power management system, battery packs, and outdoor thermal insulation battery enclosures. The presentation will give attention to the requirements on using. EMC can also communicate by accessing a normal 5G network but at a. Enter hybrid energy systems—solutions that blend renewable energy with traditional sources to offer robust, cost-effective power.



What system does wind-solar hybrid communication base station belong to?

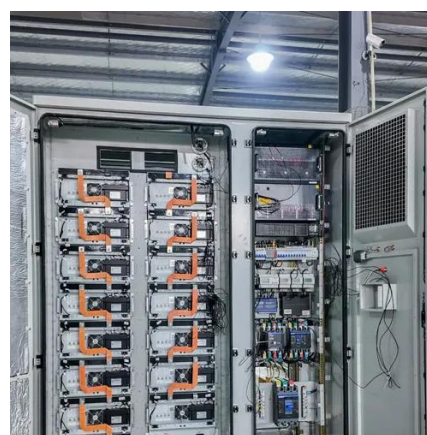


[The Role of Hybrid Energy Systems in Powering Telecom Base Stations](#)

Hybrid energy solutions enable telecom base stations to run primarily on renewable energy sources, like solar and wind, with the diesel generator as a last resort. This reduces ...

[How to make wind solar hybrid systems for telecom stations?](#)

Wind & solar hybrid power generation consists of wind turbines, controllers, inverters, photovoltaic arrays (solar panels), battery packs (lithium batteries or gel batteries), DC and AC loads, etc.



[Solar-Wind Hybrid Power for Base Stations: Why It's Preferred](#)

Under normal circumstances, communication base stations usually adopt a hybrid system of solar and wind energy for energy storage. Do you know why? Communication base stations ...

[Building wind and solar hybrid power for communication ...](#)

Does Indonesia's telecommunication base station have a hybrid energy system? Visibility study of optimized hybrid energy system implementation on Indonesia's telecommunication base station.



[Wind-solar hybrid for outdoor communication base stations](#)

Integrated Solar-Wind Power Container for Communications This large-capacity, modular outdoor base station seamlessly integrates photovoltaic, wind power, and energy storage to provide a stable ...

[Wind power construction of communication base stations](#)

The wind-solar-diesel hybrid power supply system of the communication base station is composed of a wind turbine, a solar cell module, an integrated controller for hybrid energy



[A review of hybrid renewable energy systems: Solar and wind ...](#)

Combining solar and wind energy into a hybrid renewable energy system can be done in various ways to optimize energy production, reliability, and efficiency. Below are some methods ...



[WIND SOLAR HYBRID POWER TECHNOLOGY FOR COMMUNICATION BASE](#)



HJ-intelligent hybrid power system is used for communication base station equipment, which can integrate photovoltaic modules, wind power generation modules, rectifier modules, inverter modules, ...



[Do you know these key points about the wind-solar hybrid power ...](#)

Our company's wind-solar hybrid power supply system for communication base stations consists of the FD series wind turbines, solar cell modules, an integrated communication power management ...

[Communication base station wind and solar hybrid automated ...](#)

The wind-solar-diesel hybrid power supply system of the communication base station is composed of a wind turbine, a solar cell module, an integrated controller for hybrid energy





Contact Us

For catalog requests, pricing, or partnerships, please visit:

<https://www.iwap.com.pl>

Phone: +34 919 456 782

Email: info@iwap.com.pl

Scan the QR code to access our WhatsApp.

