



# What to do on a communication engineering base station





## Overview

---

The base station acts as a converter, taking radio waves from a mobile phone and transforming them into a digital format that can be routed across the wider network, often using fiber optic connections. In this article, we target the audience of Wireless Communications Engineers working within Telecommunications Carriers, and we discuss comprehensive strategies for base station design that integrate cutting-edge engineering with powerful business intelligence and data analytics. Meanwhile, the pole serves as a mounting point for antennas, Remote Radio Units (RRUs), and. The present-day tele-space is incomplete without the base stations as these constitute an important part of the modern-day scheme of wireless communications. They are referred to as cell towers or cellular antennas. In the context of cellular networks, it facilitates wireless communication between mobile devices and the core.



## What to do on a communication engineering base station



### [What are Base Station in Telecommunications?](#)

Base stations contain several key parts. The antenna sends and receives radio energy. The transceiver handles signal modulation. The baseband processor converts signals to digital form. ...

### [What Is a Base Station? Definition and How It Works](#)

Define the central communication hubs of modern wireless technology. Learn how base stations manage capacity and ensure reliable connections.



### **BS (Base Station)**

They are designed as a set of hardware and software components that work together to provide wireless communication services, including antennas, radios, processing units, network ...

### [The Base Station in Wireless Communications: The Key to Modern](#)

Equipped with an electromagnetic wave antenna, often placed on a tall mast, the base station enables communication between mobile terminals (such as mobile phones or pagers) and the ...



### [Understand Cellphone Basestation Technology » Electronics Notes](#)

Understand the major elements within a cellphone or mobile phone base station, what each element does and how the technology is evolving to provide more flexible operation & better performance.

### [What is a Base Station in Telecommunications?](#)

Discover the role and functionality of a base station in telecommunications networks. Learn how these critical components manage communication between mobile devices and the network, ensuring ...



### **What Is A Base Station?**

A base station is an integral component of wireless communication networks, serving as a central point that manages the transmission and reception of signals between cellular networks ...

### [Base Station Design for Wireless Communications Engineers](#)



In this article, we target the audience of Wireless Communications Engineers working within Telecommunications Carriers, and we discuss comprehensive strategies for base station design that ...

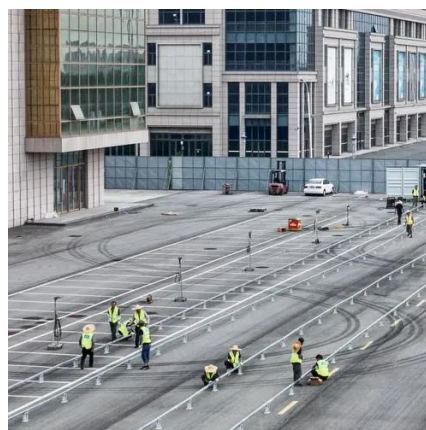


### [Complete Guide to 5G Base Station Construction, Key Steps, ...](#)

Explore how 5G base stations are built--from site planning and cabinet installation to power systems and cooling solutions. Learn the essential components, technologies, and challenges ...

## Base Stations

Base stations form a key part of modern wireless communication networks because they offer some crucial advantages, such as wide coverage, continuous communications and an array of ...





## Contact Us

---

For catalog requests, pricing, or partnerships, please visit:

<https://www.iwap.com.pl>

Phone: +34 919 456 782

Email: [info@iwap.com.pl](mailto:info@iwap.com.pl)

Scan the QR code to access our WhatsApp.

