



# What voltage should be used to charge a 36v solar battery cabinet lithium battery pack





## Overview

---

8V safely bring a 36V battery to full charge without overcharging. Lower voltages prolong battery cycle life but reduce usable capacity, while exceeding volts risks damage. Charging voltages between 42. Charging within this range ensures full capacity while protecting battery health and maximizing lifespan. Using a charger matched to these voltage settings, like those recommended by DEESPAEK, guarantees. Best practices include using a compatible charger designed for lithium-ion batteries, charging in a temperature range of 0°C to 55°C (32°F to 131°F), and following the recommended charging profile of constant current followed by constant voltage. By understanding battery voltage and its impact on performance, you'll be better equipped to charge. Understanding the charging and discharging voltage parameters of a 36V LiFePO4 cell is crucial for optimizing performance and ensuring longevity.



## What voltage should be used to charge a 36v solar battery cabinet lit

---



### [36V LiFePO4 Cell Charge and Discharge Voltage Guide](#)

Understanding the charging and discharging voltage parameters of a 36V LiFePO4 cell is crucial for optimizing performance and ensuring longevity. A 36V LiFePO4 battery pack typically ...

### [How many volts of solar panels are needed to charge a 36v battery?](#)

The required voltage of solar panels to effectively charge a 36V battery is generally around 48 volts, in addition to several other key considerations in determining system efficiency.

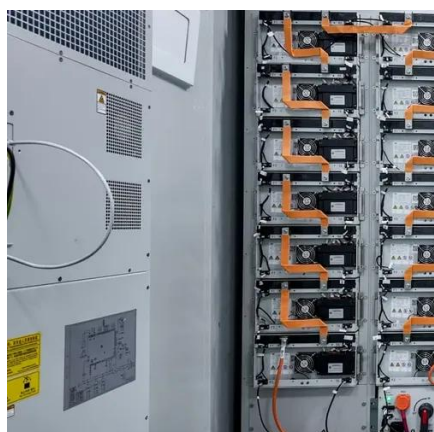


### [Understanding the Voltage Threshold of a 36V Lithium-Ion Battery](#)

A 36V lithium-ion battery typically has a nominal voltage of 36 volts, with a fully charged voltage ranging from about 42 to 43.8 volts and a recommended safe minimum discharge voltage ...

### [How to Charge a 36 Volt Lithium-Ion Battery Safely and Effectively](#)

How do you choose the right charger for a 36 Volt lithium-ion battery? Select a charger that matches the battery's voltage (36V) and has appropriate current ratings for efficient charging.

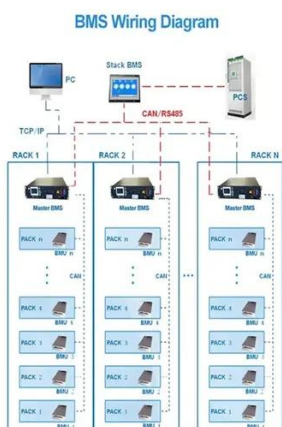


### [Optimal Charging Voltage for a 36V Battery: Maximizing Performance ...](#)

Charging voltages between 42.0V and 43.8V safely bring a 36V battery to full charge without overcharging. Lower voltages prolong battery cycle life but reduce usable capacity, while ...

### [What voltage should a 36V battery be charged at?](#)

When it comes to charging a 36V battery, the recommended voltage can vary depending on the type of battery you are dealing with. Each type has its own specific requirements to ensure ...



### [What Should a 36V Battery Charge at? \(In-depth Analysis\)](#)

Most 36V batteries require a charging voltage of between 42 and 58 volts. However, some batteries may require a higher CCA or lower voltage, so it's always best to check your owner's ...

### [36V LiFePO4 Cell Charging and Discharging Voltage Chart](#)



This comprehensive guide will delve into the voltage characteristics of the 36V LiFePO4 battery and provide insights into best practices for maintaining optimal battery health.



### [The Complete Guide to Lithium-Ion Battery Voltage Charts](#)

The ideal voltage for a lithium-ion battery depends on its state of charge and specific chemistry. For a typical lithium-ion cell, the ideal voltage when fully charged is about 4.2V.

### [What Size Solar Panel Is Needed To Charge a 36V Battery?](#)

To charge a 36V battery, you'll need a solar panel that produces at least 36V; however, this may vary based on your setup. It could even surpass this minimum requirement depending on the battery's ...





## Contact Us

---

For catalog requests, pricing, or partnerships, please visit:

<https://www.iwap.com.pl>

Phone: +34 919 456 782

Email: [info@iwap.com.pl](mailto:info@iwap.com.pl)

Scan the QR code to access our WhatsApp.

