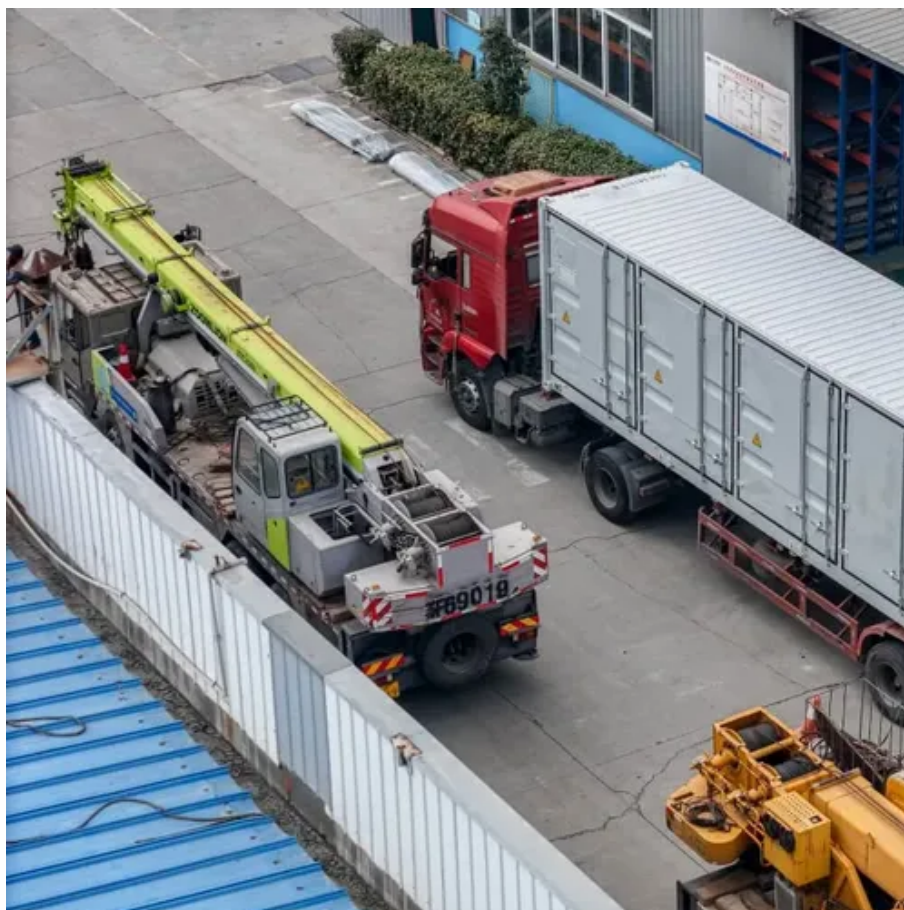




What will happen if the photovoltaic panel is plugged in the wrong way





Overview

Exposed cables, tangled runs, and poor routing can cause overheating, system errors, or even fire hazards. Mppt 150/100 appears to be blown due to reversed pv input polarity. Is it possible to repair the damaged unit from this type of fault?

@Stan Flowers I have seen reverse polarity made on an mppt from the pv side with the battery connected correctly. The 2 cables you see on the picture were connected directly to the battery (with no regulator);The + terminal to the - terminal (and vice versa), the black box in the picture went crack. A solar panel will still generate a high voltage, but it will be conducted through the cells. The cells in the solar panel will get hotter as the voltage increases, but the cell surface is large enough to handle the heat. But what happens if PV modules, or solar panels, are disconnected when not in use?

Disconnection stops energy production, which means missing out on generating electricity that could be stored for later use. Additionally, leaving PV modules disconnected without protective measures can have. The real make-or-break moment often comes down to the construction process, where even small missteps can lead to long-term system issues, efficiency losses, or even safety risks. Troubleshooting basic issues is something that every homeowner should be aware of.



What will happen if the photovoltaic panel is plugged in the wrong way



[Solar Panel Problems and Solutions Explained](#)

Solar panel fault-finding guide including examples and how to inspect and troubleshoot poorly performing solar systems. Common issues include solar cells shaded by dirt, leaves or mould.



[What Happens if a Solar Panel is Not Connected?](#)

Now, to understand if it is ok to leave a solar panel disconnected, let's discuss the effects of unconnected solar panels and the potential risks associated with their disconnection.



[Accidentally reversed polarity of pv input](#)

Opening the unit does damage components if not done carefully as they are bonded inside. But can be done if a person has the patience and skill for it. Have you tried a firmware ...

[What Happens if a Solar Panel is Not Connected to Anything?](#)

What Happens to The Solar Panels Is It OK to Let The Solar Panels Get Hot? Is It OK to Leave A Solar Panel Disconnected? Is It Necessary to Unplug Solar Panels? What Happens to Excess Solar Power generated? Should I Cover Solar Panels When Not in use? Conclusion Solar panels are not perfect, but



they are among the safest power sources available today. As long as the connections and installation are done right and the system is not overloaded, you do not have to worry about something untoward happening. See more on [portablesolarexpert ankersolix](#)

What Happens If PV Modules Are Not Connected?

When PV modules are not connected, their electrical energy has no designated path, potentially leading to overheating and fire. This risk increases with the ...



[Fix Your Solar Panel Wiring Problems: A Clear Path to Peak ...](#)

Connection problems in solar wiring systems often start with simple issues that can significantly impact your system's performance. One of the most common issues is loose ...

[11 Common Problems with Solar Panel Wire ...](#)

In today's article we will discuss 11 common problems with solar panel wire connectors and how to fix them.



[Solar Panel Not Working? How to Diagnose & Fix Common Issues](#)

Solar panels are one of the most important components of your solar system. They may experience a variety of issues, including physical damage, corrosion, loose connections, and dust buildup. Let's ...



[Top Solar PV Installation Mistakes \(and How to Avoid Them\)](#)

Exposed cables, tangled runs, and poor routing can cause overheating, system errors, or even fire hazards. Use consistent cable lengths, secure fixings, and clean routing paths. Keep wires ...

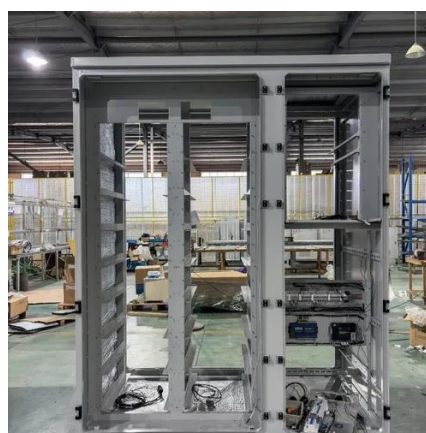


[What Happens If PV Modules Are Not Connected? Let's Find Out](#)

When PV modules are not connected, their electrical energy has no designated path, potentially leading to overheating and fire. This risk increases with the accumulation of heat and energy within the ...

put terminals wrong way on solar panel

In general, since a solar panel is a limited current source and since a charge controller will prevent current from flowing back from the panels into the battery, wiring a solar panel backwards ...



[What Happens if a Solar Panel is Not Connected to Anything?](#)



A solar panel will not turn solar energy into direct current until there is a circuit. If there is no circuit, the solar panel will just "sit there" as the photons will not be converted into electricity.



Contact Us

For catalog requests, pricing, or partnerships, please visit:

<https://www.iwap.com.pl>

Phone: +34 919 456 782

Email: info@iwap.com.pl

Scan the QR code to access our WhatsApp.

