



Which three-phase power supply cabinet is safest in Chile



- ✓ TELECOM CABINET
- ✓ BRAND NEW ORIGINAL
- ✓ HIGH-EFFICIENCY





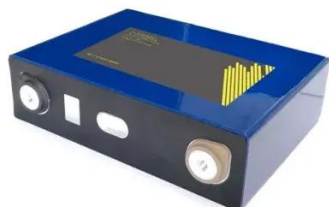
Overview

It can be extremely dangerous to use an electrical appliance that is rated at a voltage different from the supply. As voltage can differ from country to country, you may need to use a voltage converter or transformer whilst in Chile. MHI will contact you for details of SCR, Soft Start, and ratings such as UL, cUL, CE THREE-PHASE LOADS Two circuits—Delta and Wye — maintain an equal load across the three hot. In today's industrial and commercial environments, reliable and efficient power distribution is crucial for smooth operations. 3 phase electrical cabinet play a vital role in achieving this goal by providing a centralized and organized solution for managing electrical power. These cabinets are. In Chile, types C and L are the official standards. In line with much of Continental Europe and Uruguay, it has also adopted the German type F system, but only for high-power appliances like washing machines. What is the mains voltage in Chile?

Just like most of South America, the voltage in Chile. This setup requires three or four cords: three live cords (each carrying one phase) and, in many cases, a neutral cord. Type-L outlets are standard in Chile, and while they accept type-L and type-C plugs, they DO NOT accept.



Which three-phase power supply cabinet is safest in Chile



[Power Outlets and Voltage in Chile: Best Travel Adapters](#)

Use this Guide to Power Outlets and Voltage in Chile to keep your electronics safe and usable while traveling! In this article, we cover the voltage level and plug/ outlet types used in Chile, ...

[Single-Phase and Three-Phase Voltage by Country](#)

Explore the differences in single-phase and three-phase voltage standards worldwide with our comprehensive guide.



[Understanding The 3 Phase Electrical Cabinet: Key Features And ...](#)

By carefully evaluating these factors, you can select the most appropriate 3 phase cabinet for your specific needs and ensure the safety, reliability, and efficiency of your electrical system.



[Three-Phase System Safety Precautions in context of three phase ...](#)

Three-phase power systems are widely used in industrial, commercial, and residential applications due to their efficiency and reliability. However, they also pose unique safety risks if not ...



The Electric Power system

Contents (1/2) Country basic facts Global map of the grid and its interconnections Grid facts and characteristics Structure of the electrical power system Map of the high voltage grid Information on ...



[Travel Adaptor for Chile , Electrical Safety First](#)

This means that you will not need a converter or transformer but just a travel adaptor, because Chile operates on a 220V supply voltage, which is within the 110-240V range that the dual voltage ...



Typical Three Phase in Various Countries

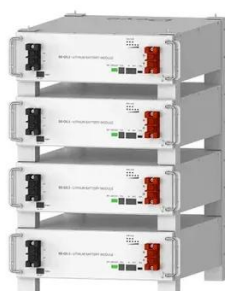
The Delta configuration has the three phases connected like a triangle, whereas the Wye (or "star") configuration has all three loads connected at a single neutral point.



[Single-phase and three-phase electrical voltage by country](#)



Understanding the distinctions between single-phase and three-phase electrical systems is crucial for various applications and industries. These differences impact efficiency, usage, and ...



Deye Official Store

10 years
warranty

Phase 3 Connectors USA

We supply and manufacture industrial power connectors used worldwide across many industries. Our Powersafe and Showsafe power connectors are among the world's safest devices for single phase or ...



Contact Us

For catalog requests, pricing, or partnerships, please visit:

<https://www.iwap.com.pl>

Phone: +34 919 456 782

Email: info@iwap.com.pl

Scan the QR code to access our WhatsApp.

