

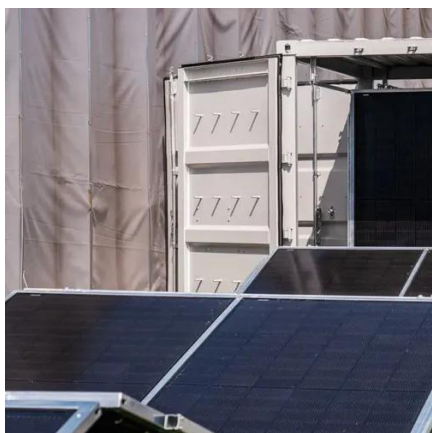


Why is the AC voltage of the solar inverter too high





Why is the AC voltage of the solar inverter too high



output voltage peaked too high

output voltage peaked too high Hi, I have installed an EaySolar-II-GX that is currently off grid. It was working fine for 2 days then last w/e it went to 300V and raised an overload L1 alarm ...

[How to Solve Inverter Input Peak Voltage Issues in Solar Systems](#)

Solar inverters act as the brain of photovoltaic (PV) systems, converting DC power from panels into usable AC electricity. When input voltage exceeds the inverter's maximum tolerance (typically ...



[Why the overvoltage tripping or power reduction occurs?](#)

Your solar inverter's output terminals are connected to a 'Connection Point' with the grid by a cable. This cable has an electrical resistance that creates a voltage across the cable whenever the inverter ...

[How do you solve a too high voltage on your solar panels?](#)

Read what a high AC power means for your solar panels and how to solve this here.



[How to Troubleshoot AC Overvoltage of Solar Inverter?](#)

The AC voltage overrange is the most common failure of the solar inverter connected with the PV grid system. This is because the grid voltage is not constant and it will change with the ...



[\[SolarEdge 2xE\] AC voltage too high, grid over-voltage? : r/solar](#)

Most string inverters have a normal voltage operating range, but that range can usually be extended by 10% or so. Usually if they need the upper voltage limit to be raised, you'll have to call ...



[How to Troubleshoot AC Overvoltage of Solar Inverter System?](#)

Facing AC overvoltage issues in your solar inverter system? Learn the causes, step-by-step and effective preventive measures to maintain stable energy output.



Inverter Error: AC Voltage Too High



To verify an impedance problem, shut the inverter off and measure the line voltage at the inverter AC input. If it is something close to 240, then flip that breaker off and start looking for a bad ...

- LiFePO₄
- Wide temp: -20°C to 55°C
- Easy to expand
- Floor mount&wall mount
- Intelligent BMS
- Cycle Life:≥6000
- Warranty :10 years

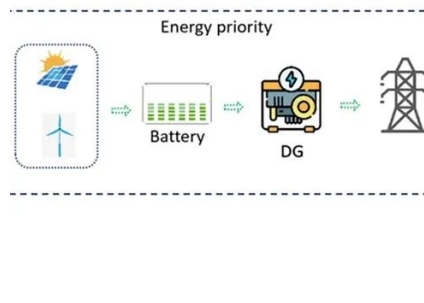


Amps too high for inverter?

Most manufacturer's allow significant over paneling and will explicitly list the limitations, which you should probably follow. In this case, 18A PV input. Also, SCC's aren't all that expensive, ...

what does AC Voltage High mean and what should one do?

Because the micros are AC coupled to the grid they are impacted by the grid's performance and voltage reference. The IEEE 1547 standard requires that grid-tied or utility-interactive inverters cease power ...





Contact Us

For catalog requests, pricing, or partnerships, please visit:

<https://www.iwap.com.pl>

Phone: +34 919 456 782

Email: info@iwap.com.pl

Scan the QR code to access our WhatsApp.

