



# Will wind turbines work if the wind is weak





## Overview

---

No, wind turbines do not generate electricity when it's not windy. This is because energy consumption contributes to almost three-quarters of global greenhouse gas emissions. Decarbonising our energy system, starting with electricity, can help limit global warming to. In the United States, 80% of tornadoes reported are “weak” tornadoes, with wind speeds over 200 mph, account for less than 1% of all tornado reports. Risks from extreme weather are increasing Deploying renewable energy resources like wind turbines is a way to mitigate the impacts of global. A lack of wind is one of the reasons why you see wind turbines in wind farms stopped, but it is not the only reason. We will explain everything you should know. You are not the first person to ask why you have sometimes seen a number of wind turbines stopped and you will not be the last.



## Will wind turbines work if the wind is weak

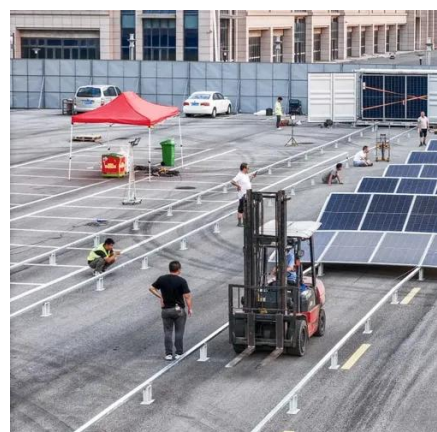


### Why are there wind turbines stopped if there is wind

We will explain why we see wind turbines stopped even though there is enough wind to generate electricity.

### Is it true that wind turbines don't work in the winter?

No: with proper preparation, wind turbines can work in extreme cold temperatures and in snow and ice.



### **Why Do Wind Turbines Stop?**

Wind turbines are designed to operate at relatively low wind speeds because of their aerodynamic blade shape. The wind passing over the blades creates high-pressure ...

### How Do Wind Turbines Survive Severe Weather and Storms?

Wind turbines need to protect themselves just as communities do during severe weather events and storms. Find out how wind turbines survive severe storms, like hurricanes and tornadoes, ...



48V 100Ah



### How Do Wind Turbines Survive Severe Storms?

Wind turbines need to protect themselves just as communities do during tropical storms, hurricanes, and tornadoes. To understand what happens, let's first discuss a wind turbine's power



### **Do wind turbines work when it's cold?**

But is it true? As we'll show below, winter weather can slow down wind turbines, particularly by causing ice to build up on their blades. But wind turbine operators are well aware of ...



### Can Wind Turbines Work When Its Not Windy?



It sounds like a strange question, but I quite often get asked 'Do wind turbines work when it's not windy?' No, wind turbines do not generate ...



### What Happens If Wind Turbine Has No Load

Wind turbines are designed to operate in specific ranges of wind, and if there is too little wind and the blades move too slowly, the turbine no longer produces electricity.

### Friday Focus #2

Wind turbines are designed to operate at relatively low wind speeds because of their aerodynamic blade shape. The wind passing over the blades creates high-pressure zones ...



### Why Do Wind Turbines Stop?

Even when there is no wind at ground level, there can still be a significant wind speed at the height of the turbine, so it is not uncommon to see turbines rotating when it feels like there is no ...



## Contact Us

---

For catalog requests, pricing, or partnerships, please visit:

<https://www.iwap.com.pl>

Phone: +34 919 456 782

Email: [info@iwap.com.pl](mailto:info@iwap.com.pl)

Scan the QR code to access our WhatsApp.

