



Wind power fan blade crushing and cutting





Overview

The green fine recycling technology is employed to disassemble, shred, and sort retired wind turbine blades as a pre-treatment process. This involves primary shredding, fine crushing, grinding, and sorting to effectively separate fibers from resin and balsa wood using advanced methods. After the decommissioning of the fan, 85%-90% of the total amount of fan can be used, but most of the blades are reinforced by glass fiber reinforced thermosetting resin base. The cutting process of this kind of material recycling is very complex, and the cutting processing of the blade front has. Guide: ZAECOTECH intelligent recycling methods cut the blades into large pieces, and then fed into primary shredder via chain conveyor. Our shredded products are then used in a variety of places, ensuring no material ends up in a landfill. Google has not performed a legal analysis and makes no representation as to the accuracy of the status listed. contractor offering fully mobile wind turbine blade cutting and grinding—eliminating landfill disposal, minimizing emissions, and supporting your sustainability goals from the ground up.



Wind power fan blade crushing and cutting



[Cutting Wind , Turnkey Wind Turbine Recycling in US](#)

Environmentally friendly, zero-waste solution for end-of-life wind turbines. We shred your blades onsite and give new life to your blades.

[Green and Refined Reuse of Retired Wind Turbine Blades](#)

Green and Refined Reuse of Retired Wind Turbine Blades. This involves primary shredding, fine crushing, grinding, and sorting to effectively separate fibers from resin and balsa wood using ...



CN11515577A

The carrying platform can be dragged by power equipment to move in mountainous areas, and used fan blades which are detached are crushed and recycled on site, so that the efficiency is

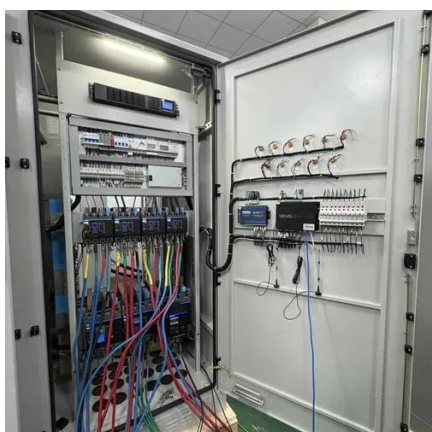
[How to Crush Fan Blades More Efficiently?](#)

Through exchanges with domestic well-known wind power enterprises and repeated experiments, it finally introduces equipment specifically for wind power blade crushing and ...



[Recycling and reuse of wind turbine blades](#)

The mechanical recycling method of wind turbine blades is an efficient and environmentally friendly treatment method. This method mainly uses mechanical crushing equipment ...



[BestBladeRecycling - Redefining Wind Energy Back End Logistics](#)

BBR is the only U.S. contractor offering fully mobile wind turbine blade cutting and grinding--eliminating landfill disposal, minimizing emissions, and supporting your sustainability goals from the ground up.



[Analysis of GFRP hybrid laser and mechanical cutting of large wind](#)

Mechanical cutting of wind turbine blade flashing faces several challenges, such as low efficiency, poor flexibility, loud noise, serious dust pollution, and significant tool wear. In this paper, a ...



[What Are the Recycling Methods of Wind Turbine Blades?](#)

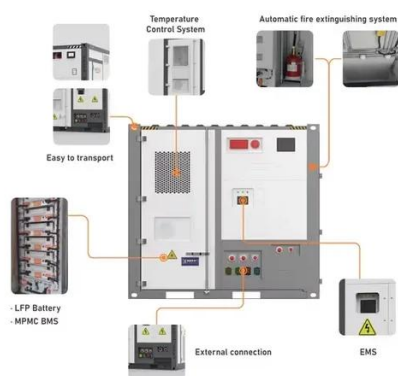


Used in construction and industry, the eliminated wind turbine blade through the front end cutting, then into the crushing equipment, broken into smaller pieces or particles, can be used in ...



[Corecut Delivers a First for Wind Turbine Blade Cutting](#)

Over two days, the two operational blades were cut and lowered. On the ground, they were sectioned into smaller pieces for easier handling and transport. The work was completed safely, on time, and ...



Wind Turbine Cutting

Adaptable to various materials, including metals and concrete, our technology ensures an efficient and tailored approach to wind turbine decommissioning and cutting up processes.





Contact Us

For catalog requests, pricing, or partnerships, please visit:

<https://www.iwap.com.pl>

Phone: +34 919 456 782

Email: info@iwap.com.pl

Scan the QR code to access our WhatsApp.

