



Wind power plant operation schedule





Wind power plant operation schedule



[Operations and Maintenance Recommended Practices](#)

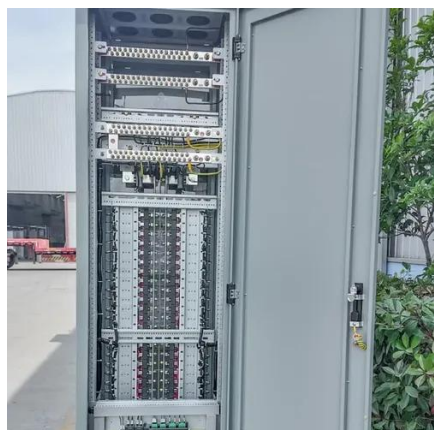
The AWEA Operation and Maintenance Recommended Practices are intended to provide establish expectations and procedures to ensure all personnel performing service and maintenance ...

Wind Turbine Maintenance Checklist

When it comes to maintaining the efficiency and longevity of wind turbines, regular maintenance is essential. A well-maintained turbine not only ensures optimal performance but also ...



2MW / 5MWh
Customizable



[Wind Turbine Operations & Maintenance - Practical Guide](#)

Guide to wind turbine operations & maintenance: safety, inspections, predictive & preventive maintenance, condition monitoring, spares and documentation.

[Wind Turbine Maintenance: A Complete Guide](#), [BGB](#)

In Summary Wind turbine maintenance is a complex, ongoing process that requires careful planning and continuous improvement. By prioritising proactive maintenance strategies, adhering to best practices, ...



[The wind energy value chain: Operation and ...](#)

Optimize wind energy operations with expert maintenance and failure analysis. Reduce downtime and extend turbine lifespan efficiently.



[Wind Farm Maintenance and Inspection Schedule . Mobile2b](#)

Maintain peak wind farm performance with our customizable maintenance and inspection schedule. Streamline operations, reduce downtime, and boost energy output through optimized workflow ...



[Routine Maintenance of Wind Turbines: A Comprehensive Guide for Wind](#)

The Bulk Operations feature supports maintenance teams in running simultaneous analyses across multiple turbines, uncovering shared trends and optimizing overall maintenance schedules. ...



[Understanding Wind Turbine Operations and Maintenance](#)

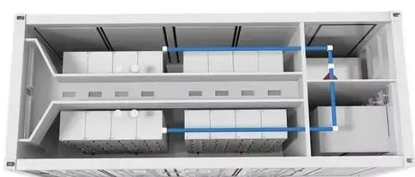


Wind turbine operation requires coordinating various mechanical, electrical, control, and computer engineering disciplines. By understanding these aspects, readers will thoroughly ...



[Key Processes of Comprehensive Wind Farm Operation Process](#)

Systematic Wind Farm Operation Process Wind farm operation is a complex process aimed at maximizing energy production while ensuring reliability and cost efficiency. It involves ...



Wind Plant Operations and

Wind Turbine Drivetrain Reliability and Wind Plant Operations and Maintenance Research and Development Opportunities. Golden, CO: National Renewable Energy Laboratory.





Contact Us

For catalog requests, pricing, or partnerships, please visit:

<https://www.iwap.com.pl>

Phone: +34 919 456 782

Email: info@iwap.com.pl

Scan the QR code to access our WhatsApp.

